

serie
VH



TA

MO

HT

VH

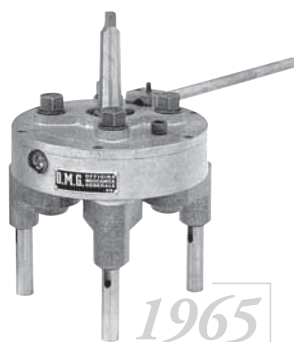
TSI/TSX

T

MT-TC-TC3

Accessori
AccessoriesAppendice tecnica
Technical supplement

teste multiple ad assi variabili
variable axis heads



Lo sviluppo della serie TE, una linea completa di teste ad assi variabili, rappresenta l'innovazione degli anni '70 che sancisce a pieni voti il successo e la notorietà del marchio O.M.G.

Gli anni '80 sono dedicati al perfezionamento della linea TE e all'introduzione di due nuove serie; la TEM e la TEF. Il risultato é la messa a punto della più completa gamma di teste ad assi variabili presenti sul mercato nazionale ed internazionale.

Le tecnologie d'avanguardia nei processi produttivi e

l'impiego di nuove tecniche computerizzate firmano la notorietà e l'immagine del marchio O.M.G.: un nome diffuso e conosciuto da tutte le aziende, piccole e grandi, un'immagine mai smentita ma sottolineata nelle numerose campagne pubblicitarie realizzate.

L'ultima generazione, la serie VH, racchiude gli elementi di tecnologia e know how delle teste multiple ad interessi fissi. Si tratta di strumenti ad alta prestazione che consentono agli utilizzatori l'impiego ottimale di tutte le più avanzate tecnologie applicate agli utensili.

La VH rappresenta una serie completamente diversa, sia sotto il profilo tecnologico che estetico: un prodotto per il quale anche la ricerca ergonomica é stata assolutamente meticolosa.



The TE series, a complete range of variable axes heads, represented a major company achievement in the seventies: it was a success and brought OMG into the limelight.

The eighties were characterised by upgrades to the TE range and the addition of two new series TEM and TEF.

Together this forms the most complete range of variable axis heads on domestic and international markets.

Cutting-edge technologies in production processes and the use of new computerised methods are the hallmarks of the O.M.G. brand name and image thanks to which the company has won renown among small and large enterprises alike, an image that has never lost its importance but which is, instead, stressed by frequent advertising campaigns.



The latest generation, the VH series, bears witness to the technology and "know how" of multispindle heads with fixed centres and allows the end user to fully exploit the latest developments in tool manufacturing.

This new VH series, so different in terms of technology and aesthetics, is also the result of meticulous ergonomic research.

VH 04	4-2
VH 06	4-4
VH 08	4-6
VH 10	4-8
VH 13	4-10
VH 18	4-12
VH 25	4-14
VH 101	4-16
VH 181	4-17
Regolazione utensili/Tool settings	4-18
Esecuzioni speciali/Special executions	4-19
Galleria fotografica/Photographic gallery	4-20

Accessori/Accessories

8-1

Dimensione mandrini/Spindle dimensions.....

9-3

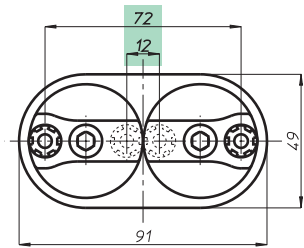
CAPACITA' FORATURA
DRILLING CAPACITY $\phi 5$

VH

modello 04

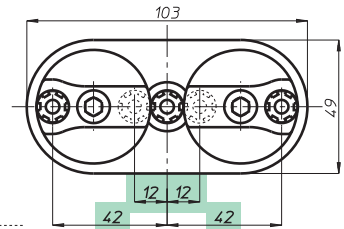


VH 042

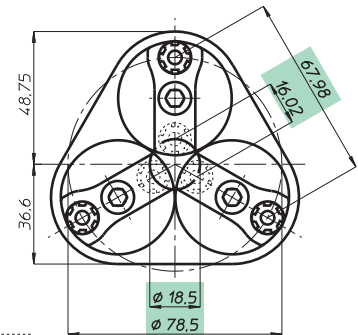


Testa modello Head type	VH 042	VH 043 L	VH 043	VH 044
Articolo Article	VH 042 P	VH 043 LP	VH 043 P	VH 044 P
Attacco utensile Type of spindle	ER 8 - ϕ max 5			
Articolo Article				
Attacco utensile Type of spindle				
N. mandrini Spindles nr.	2	3	3	4
Campo di lavoro min. Centre distances	12	12 + 12	ϕ 18,5	ϕ 29,5
max.	72	42 + 42	ϕ 78,5	ϕ 89,5
Capacità foratura Drilling capacity	Acciaio Rm 500 N/mm ² - ϕ 4			
Maschiatura Tapping	Ghisa GG25 - ϕ 5			
Rapporto Ratio	M 3			
Velocità RPM	1 - 1			
	4000			
Peso Weight	Kg. 0,95	1,05	1,4	1,9

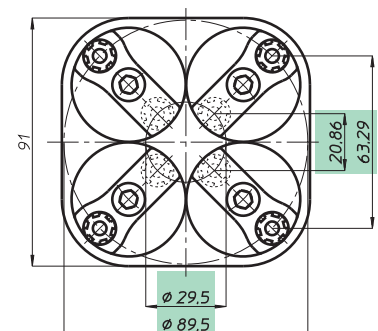
VH 043 L



VH 043



VH 044



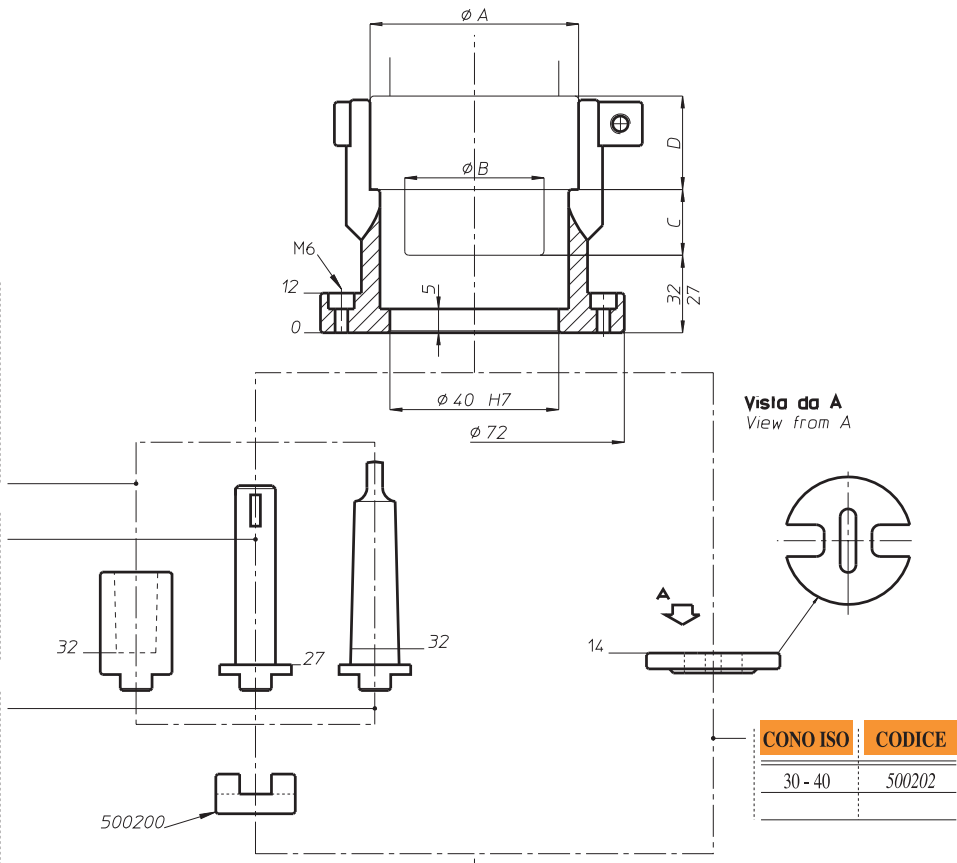
Teste multiple ad assi variabili • Variable axis heads

NOTA: A.B.C.D. dati macchina
 NOTE: A.B.C.D. machine features

DIN 238	CODICE
B 10	011277
B 12	011278
B 16	011279
B 18	011280

DIN 55058	CODICE
16	525405
20	525406
28	525407

DIN 228	CODICE
CM 1	011115
CM 2	011120
CM 3	011125



Teste multiple ad assi variabili • Variable axis heads

TA

MO

HT

VH

TSI/TSX

T

MT-TC-TC3

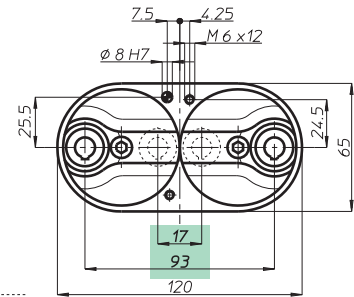
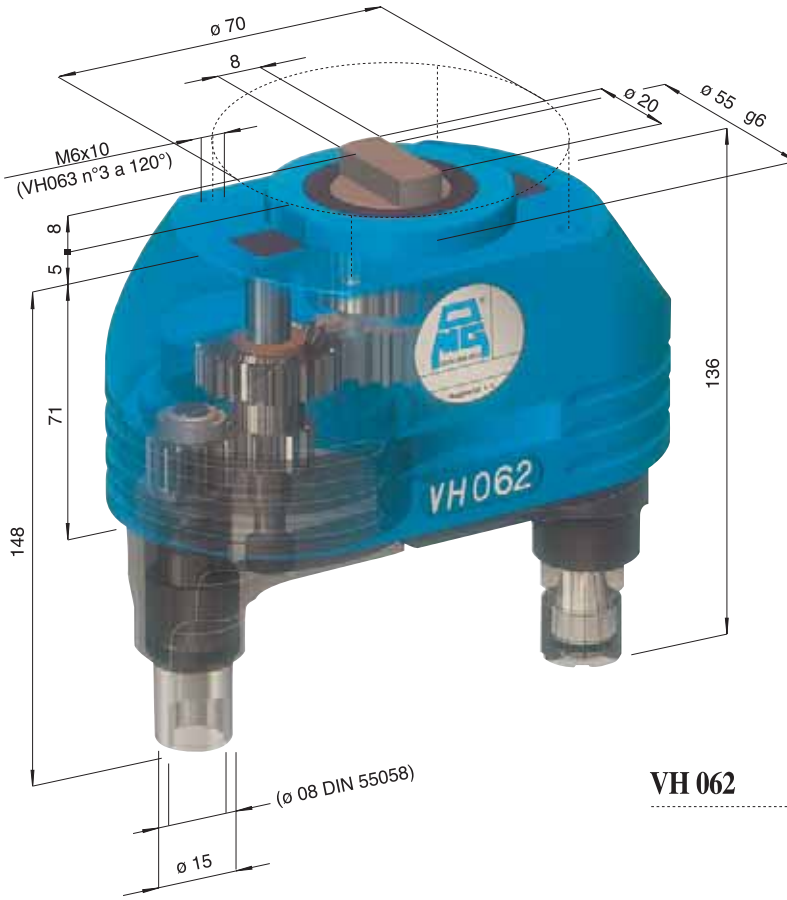
Accessori
Accessories

Appendice tecnica
Technical supplement

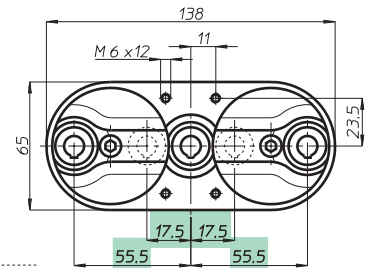
CAPACITA' FORATURA
DRILLING CAPACITY $\phi 7$

VH

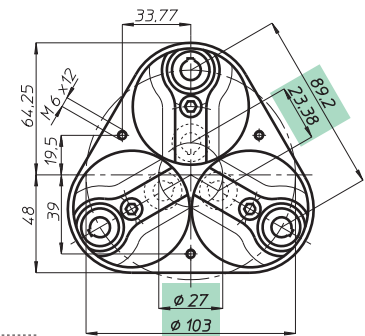
modello 06



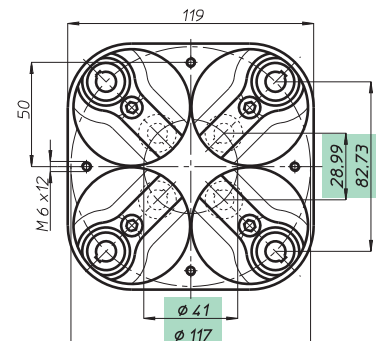
VH 062



VH 063 L



VH 063



VH 064

Testa modello Head type	VH 062	VH 063 L	VH 063	VH 064	
Articolo Article	VH 062 P	VH 063 LP	VH 063 P	VH 064 P	
Attacco utensile Type of spindle	ER 11 - ϕ max 7				
Articolo Article	VH 062 D	VH 063 LD	VH 063 D	VH 064 D	
Attacco utensile Type of spindle	DIN 55058 - ϕ 8				
N. mandrini Spindles nr.	2	3	3	4	
Campo di lavoro min. Centre distances	17	17,5 + 17,5	ϕ 27	ϕ 41	
max.	93	55,5 + 55,5	ϕ 103	ϕ 117	
Capacità foratura Drilling capacity	Acciaio Rm 500 N/mm ² - ϕ 6				
Maschiatura Tapping	Ghisa GG25 - ϕ 7				
Rapporto Ratio	M 5				
Velocità RPM	1 - 1				
Peso Weight	4000				
	Kg.	1,65	1,95	2,3	3,1

Teste multiple ad assi variabili • Variable axis heads

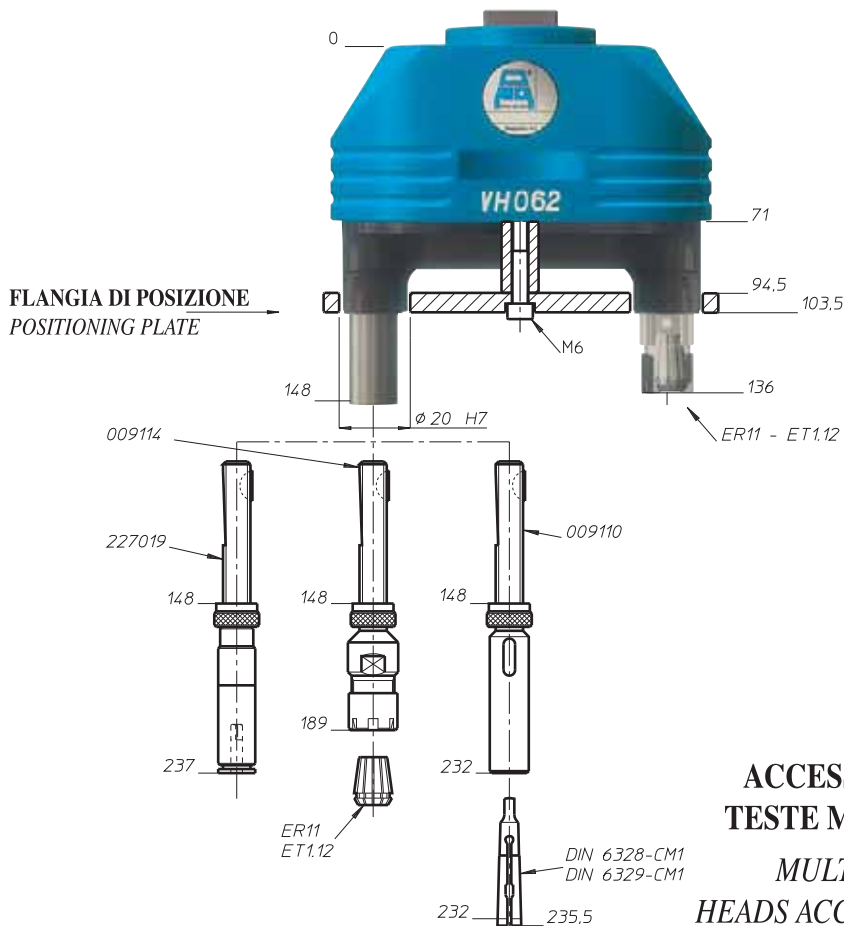
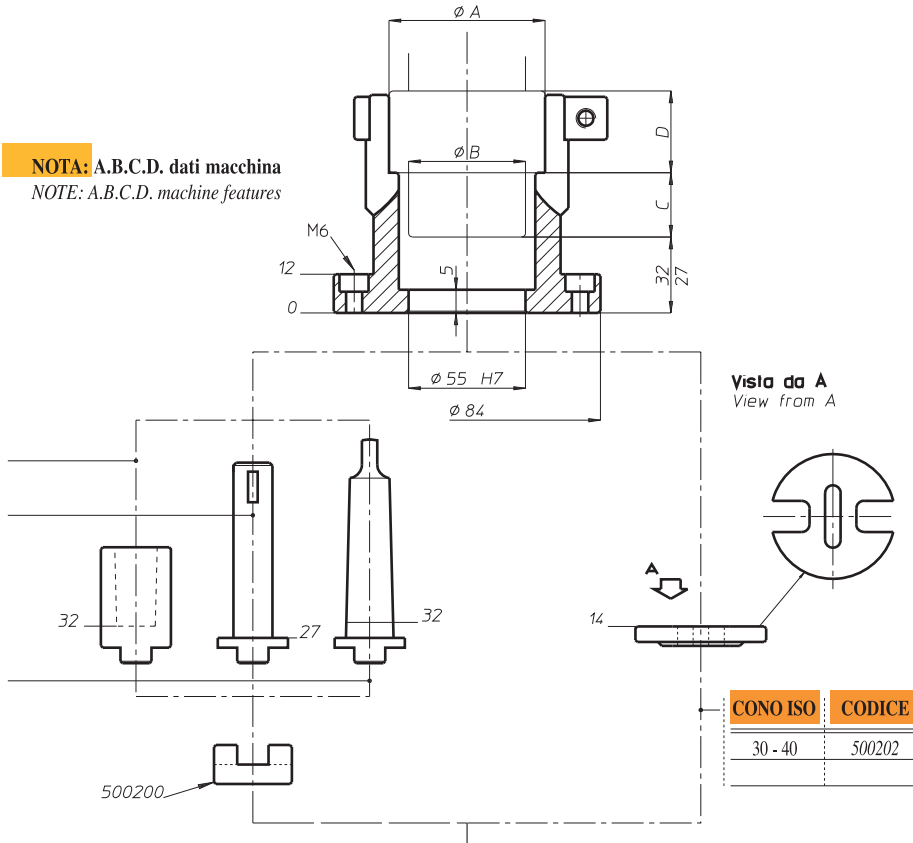
MANICOTTO DI COLLEGAMENTO - CONNECTION COLLAR

NOTA: A.B.C.D. dati macchina
NOTE: A.B.C.D. machine features

DIN 238	CODICE
B 10	011277
B 12	011278
B 16	011279
B 18	011280
B 22	011281
B 24	011282

DIN 55058	CODICE
16	525405
20	525406
28	525407
36	525408

DIN 228	CODICE
CM 1	011115
CM 2	011120
CM 3	011125
CM 4	011130
CM 5	011135



**ACCESSORI PER
TESTE MULTIPLE
MULTISPINDLE
HEADS ACCESSORIES**

Teste multiple ad assi variabili • Variable axis heads

TA

MO

HT

VH

TSI/TSX

T

MT-TC-TC3

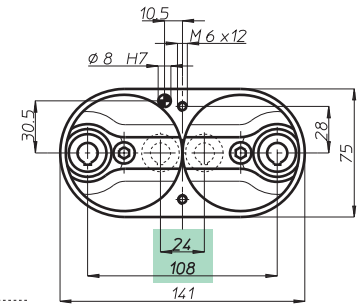
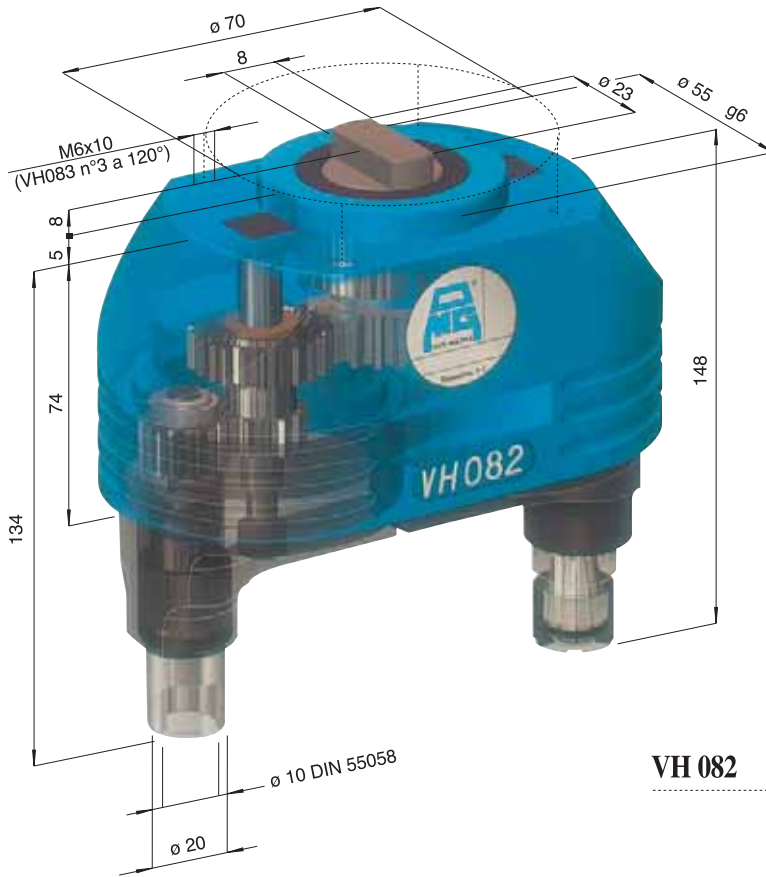
Accessori
Accessories

Appendice tecnica
Technical supplement

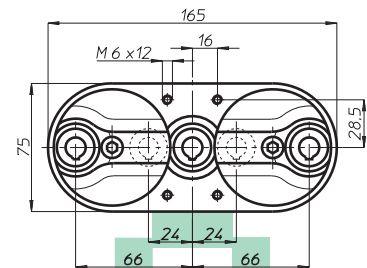
CAPACITA' FORATURA
DRILLING CAPACITY **ø10**

VH

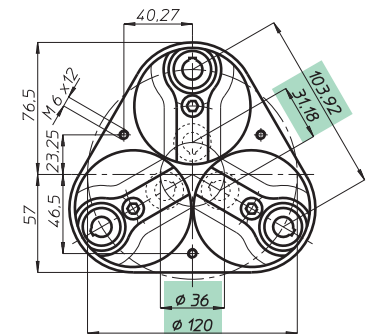
modello 08



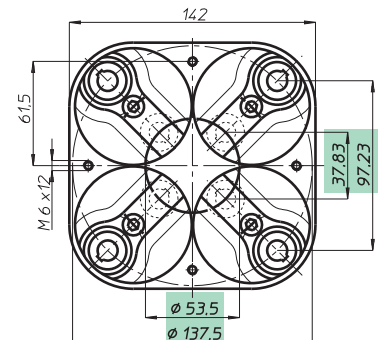
VH 082



VH 083 L



VH 083



VH 084

Testa modello Head type	VH 082	VH 083 L	VH 083	VH 084	
Articolo Article	VH 082 P	VH 083 LP	VH 083 P	VH 084 P	
Attacco utensile Type of spindle	ER 16 - ø max 10				
Articolo Article	VH 082 D	VH 083 LD	VH 083 D	VH 084 D	
Attacco utensile Type of spindle	DIN 55058 - ø 10				
N. mandrini Spindles nr.	2	3	3	4	
Campo di lavoro min. Centre distances min.	24	24 + 24	ø 36	ø 53,5	
Campo di lavoro max. Centre distances max.	108	66 + 66	ø 120	ø 137,5	
Capacità foratura Drilling capacity	Acciaio Rm 500 N/mm ² - ø 8				
Maschiatura Tapping	Ghisa GG25 - ø 10				
Rapporto Ratio	M 6				
Velocità RPM	1 - 1				
Peso Weight	4000				
	Kg.	2,2	2,9	3,4	4,6

Teste multiple ad assi variabili • Variable axis heads

TA

MO

HT

VH

TSI/TSX

T

MT-TC-TC3

Accessori
Accessories

Appendice tecnica
Technical supplement

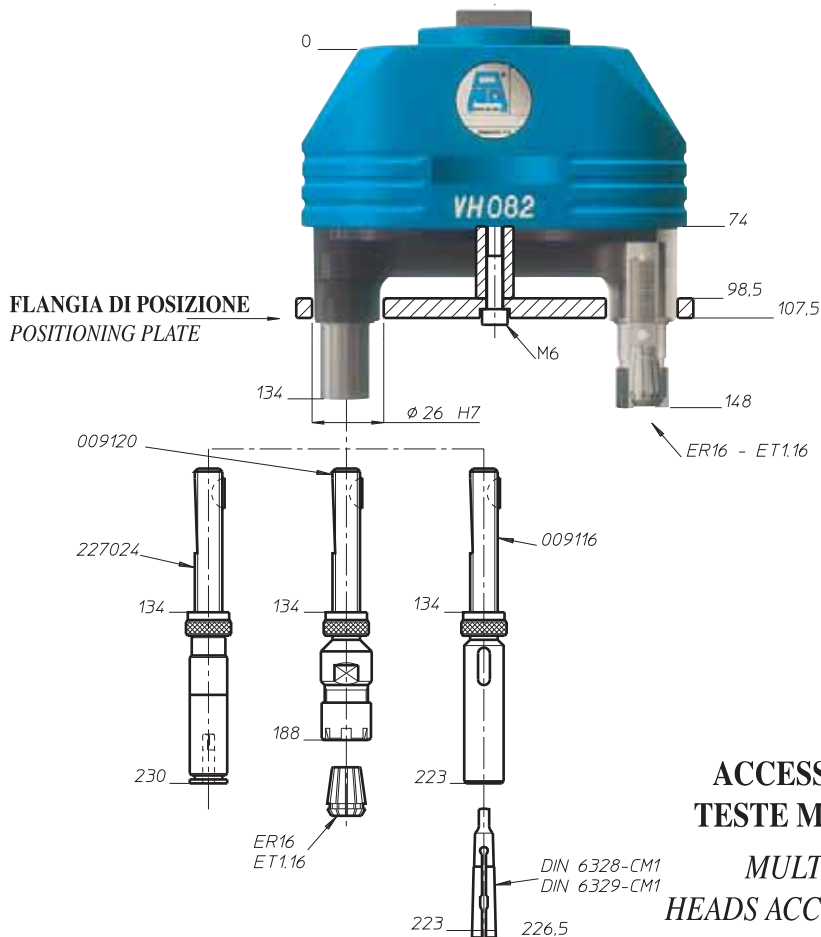
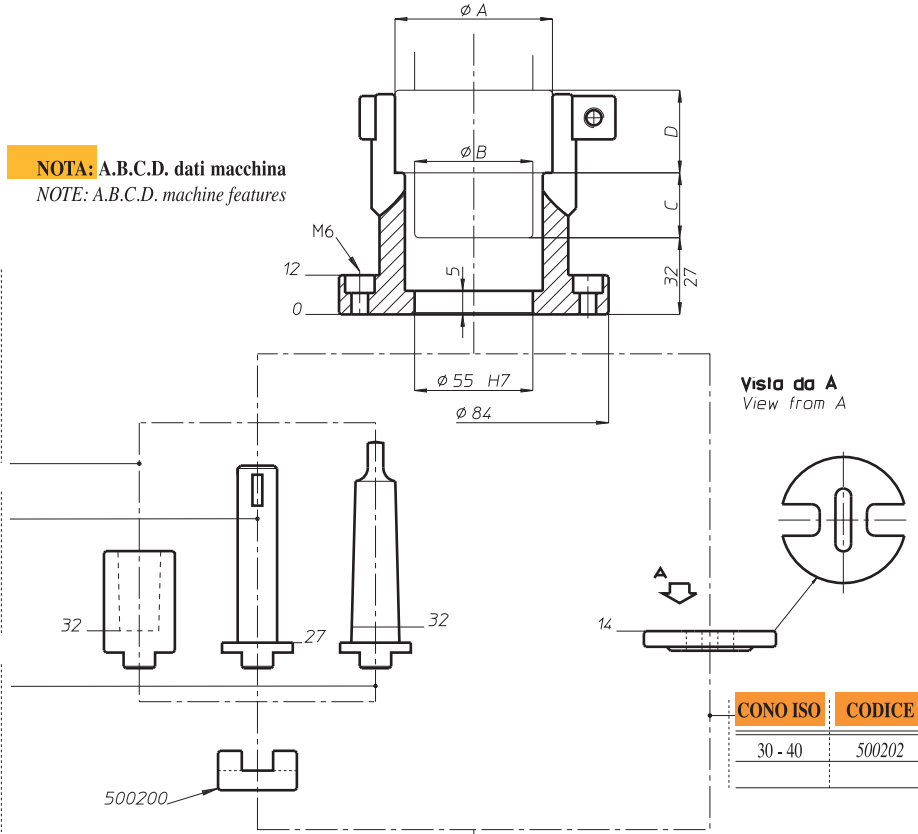
MANICOTTO DI COLLEGAMENTO - CONNECTION COLLAR

NOTA: A.B.C.D. dati macchina
 NOTE: A.B.C.D. machine features

DIN 238	CODICE
B 10	011277
B 12	011278
B 16	011279
B 18	011280
B 22	011281
B 24	011282

DIN 55058	CODICE
16	525405
20	525406
28	525407
36	525408

DIN 228	CODICE
CM 1	011115
CM 2	011120
CM 3	011125
CM 4	011130
CM 5	011135



**ACCESSORI PER
 TESTE MULTIPLE
 MULTISPINDLE
 HEADS ACCESSORIES**

Teste multiple ad assi variabili • Variable axis heads

TA

MO

HT

VH

TSI/TSX

T

MT-TC-TC3

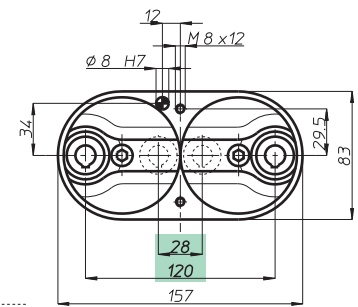
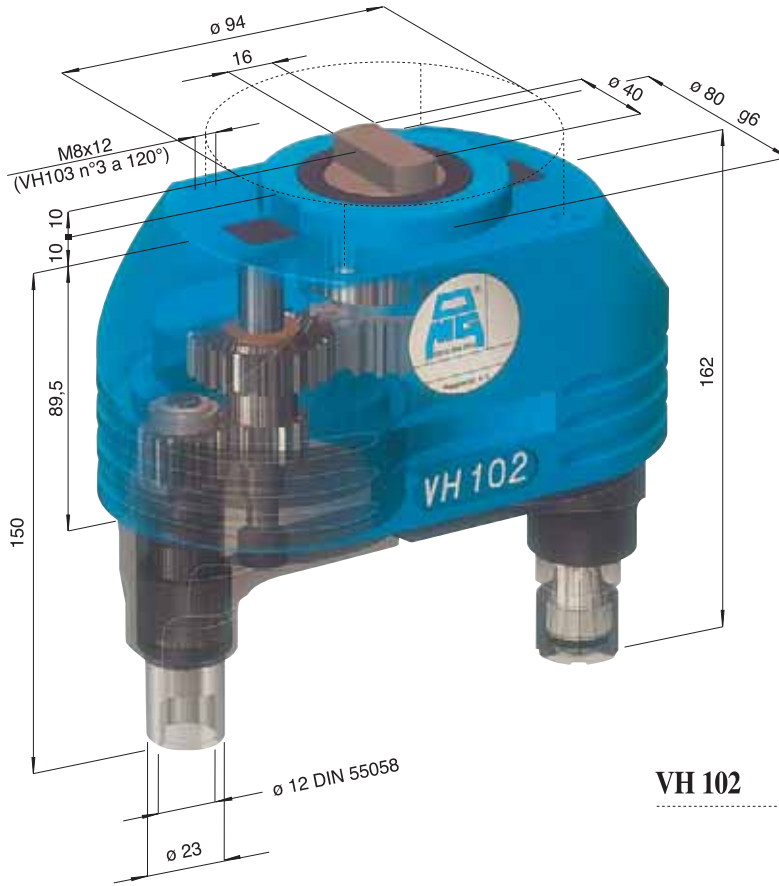
Accessori
 Accessories

Appendice tecnica
 Technical supplement

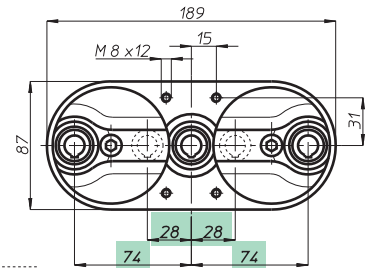
CAPACITA' FORATURA
DRILLING CAPACITY $\phi 12$

VH

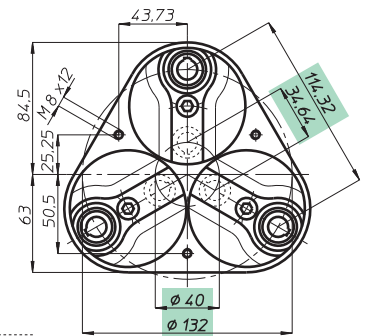
modello 10



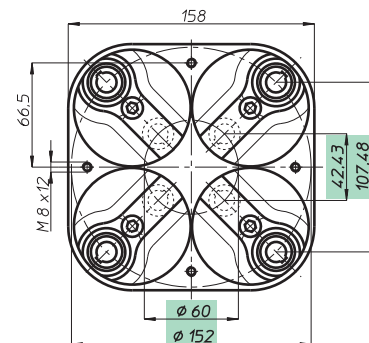
VH 102



VH 103 L



VH 103



VH 104

Testa modello Head type	VH 102	VH 103 L	VH 103	VH 104	
Articolo Article	VH 102 P	VH 103 LP	VH 103 P	VH 104 P	
Attacco utensile Type of spindle	ER 16 - ϕ max 10				
Articolo Article	VH 102 D	VH 103 LD	VH 103 D	VH 104 D	
Attacco utensile Type of spindle	DIN 55058 - ϕ 12				
N. mandrini Spindles nr.	2	3	3	4	
Campo di lavoro min. Centre distances min.	28	28 + 28	ϕ 40	ϕ 60	
Campo di lavoro max. Centre distances max.	120	74 + 74	ϕ 132	ϕ 152	
Capacità foratura Drilling capacity	Acciaio Rm 500 N/mm ² - ϕ 10				
Maschiatura Tapping	Ghisa GG25 - ϕ 12				
Rapporto Ratio	M 8				
Velocità RPM	1 - 1				
Peso Weight	3500				
	Kg.	3,5	4,9	4,9	7,2

Teste multiple ad assi variabili • Variable axis heads

TA

MO

HT

VH

TSI/TSX

T

MT-TC-TC3

Accessori
Accessories

Appendice tecnica
Technical supplement

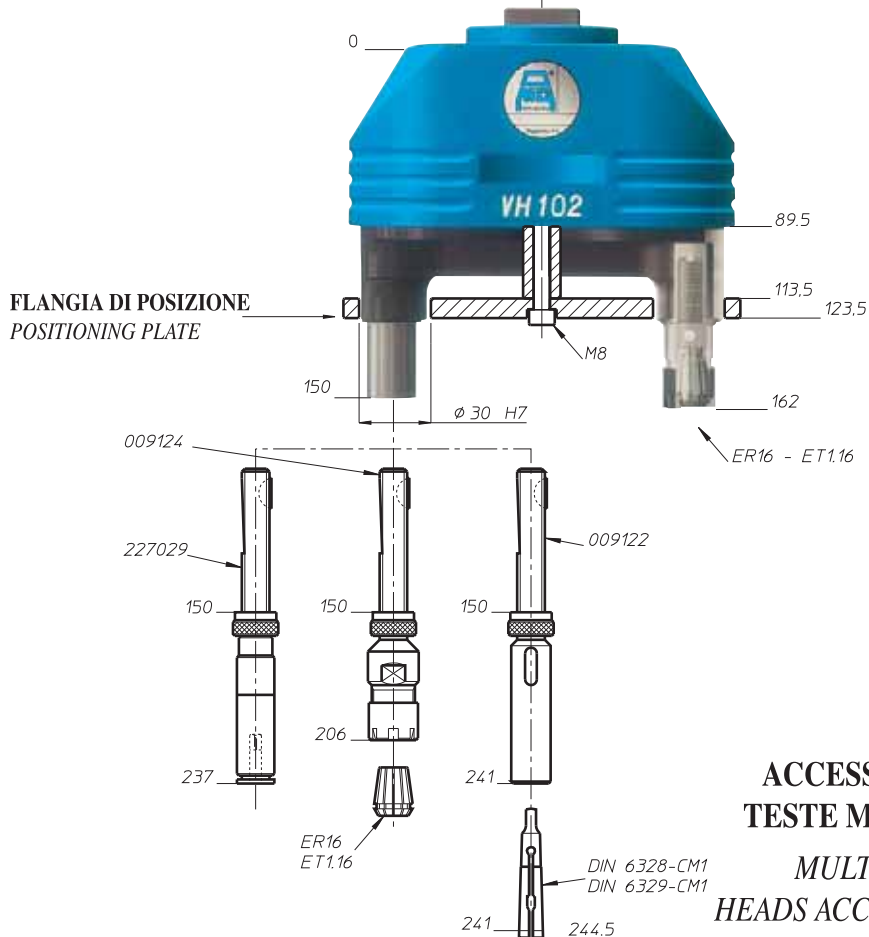
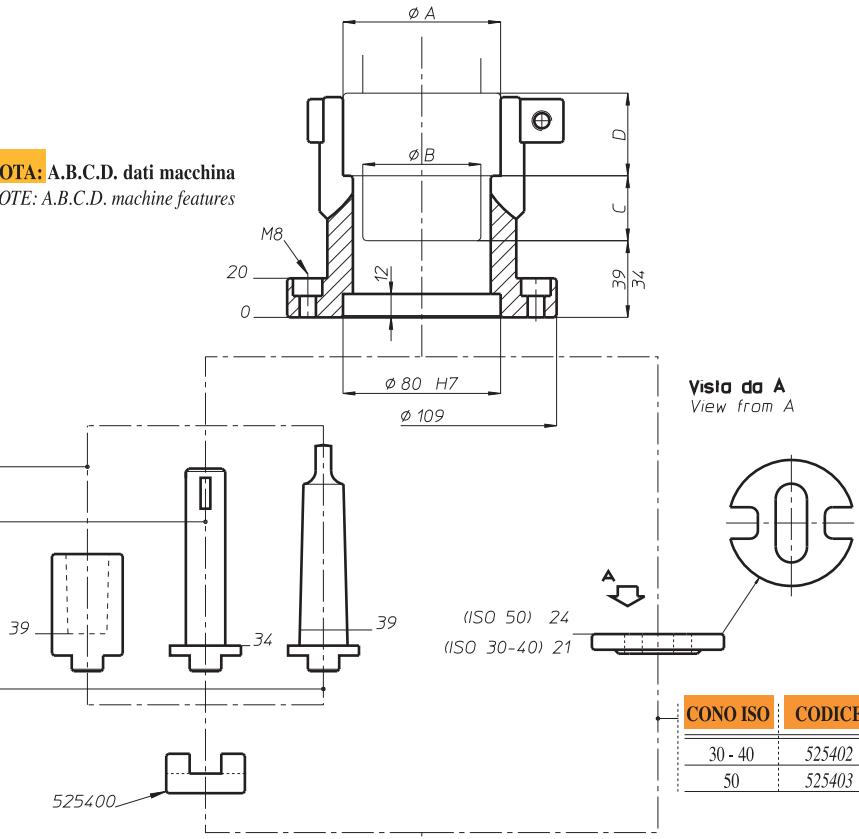
MANICOTTO DI COLLEGAMENTO - CONNECTION COLLAR

NOTA: A.B.C.D. dati macchina
 NOTE: A.B.C.D. machine features

DIN 238	CODICE
B 10	011277
B 12	011278
B 16	011279
B 18	011280
B 22	011281
B 24	011282

DIN 55058	CODICE
16	525405
20	525406
28	525407
36	525408

DIN 228	CODICE
CM 1	011115
CM 2	011120
CM 3	011125
CM 4	011130
CM 5	011135



**ACCESSORI PER
 TESTE MULTIPLE
 MULTISPINDLE
 HEADS ACCESSORIES**

Teste multiple ad assi variabili • Variable axis heads

TA

MO

HT

VH

TSI/TSX

T

MT-TC-TC3

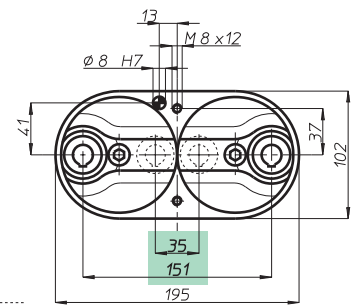
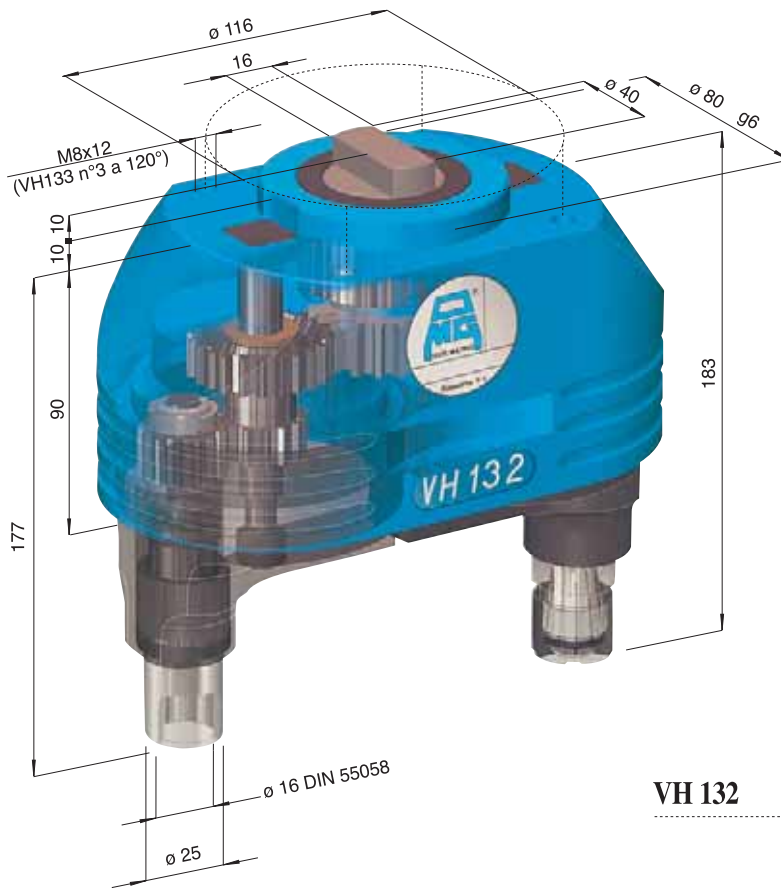
Accessori
 Accessories

Appendice tecnica
 Technical supplement

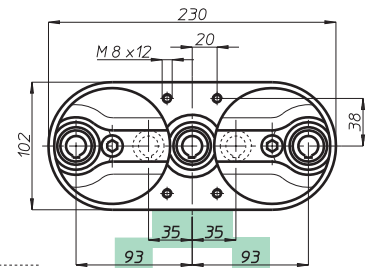
CAPACITA' FORATURA
DRILLING CAPACITY **Ø14**

VH

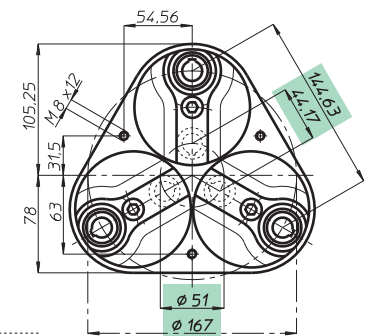
modello 13



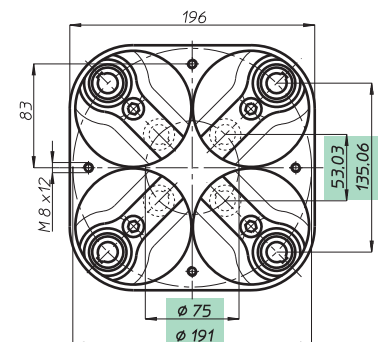
VH 132



VH 133 L



VH 133



VH 134

Testa modello Head type	VH 132	VH 133 L	VH 133	VH 134
Articolo Article	VH 132 P	VH 133 LP	VH 133 P	VH 134 P
Attacco utensile Type of spindle	ER 20 - Ø max 13			
Articolo Article	VH 132 D	VH 133 LD	VH 133 D	VH 134 D
Attacco utensile Type of spindle	DIN 55058 - Ø 16			
N. mandrini Spindles nr.	2	3	3	4
Campo di lavoro min.	35	35 + 35	Ø 51	Ø 75
Centre distances max.	151	93 + 93	Ø 167	Ø 191
Capacità foratura	Acciaio Rm 500 N/mm ² - Ø 13			
Drilling capacity	Ghisa GG25 - Ø 14			
Maschiatura Tapping	M 12			
Rapporto Ratio	1 - 1			
Velocità RPM	3000			
Peso Weight	Kg. 5,3	7,2	7	10,8

Teste multiple ad assi variabili • Variable axis heads

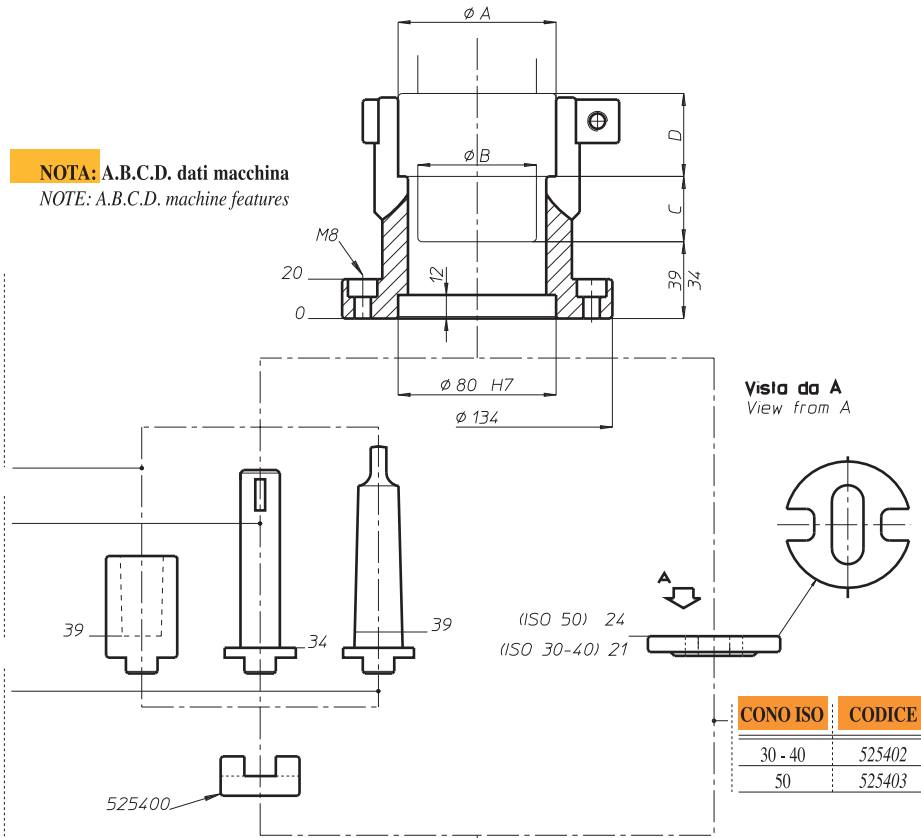
MANICOTTO DI COLLEGAMENTO - CONNECTION COLLAR

NOTA: A.B.C.D. dati macchina
NOTE: A.B.C.D. machine features

DIN 238	CODICE
B 16	011279
B 18	011280
B 22	011281
B 24	011282

DIN 55058	CODICE
16	525405
20	525406
28	525407
36	525408

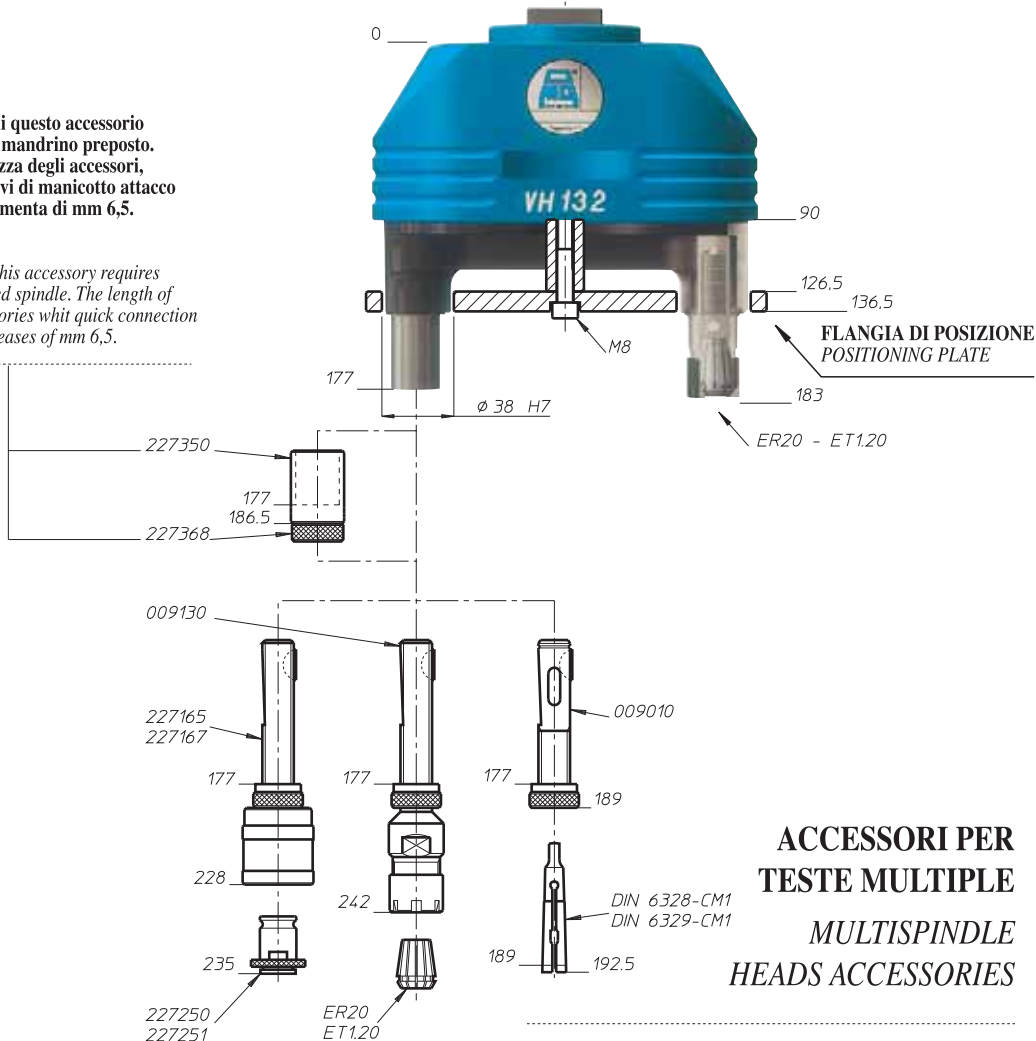
DIN 228	CODICE
CM 2	011120
CM 3	011125
CM 4	011130
CM 5	011135



NOTA:

l'utilizzo di questo accessorio richiede il mandrino preposto. La lunghezza degli accessori, comprensivi di manicotto attacco rapido, aumenta di mm 6,5.

NOTE: the use of this accessory requires prearranged spindle. The length of this accessories with quick connection sleeve increases of mm 6,5.



ACCESSORI PER TESTE MULTIPLE
MULTISPINDLE HEADS ACCESSORIES

Teste multiple ad assi variabili • Variable axis heads

TA

MO

HT

VH

TSI/TSX

T

MT-TC-TC3

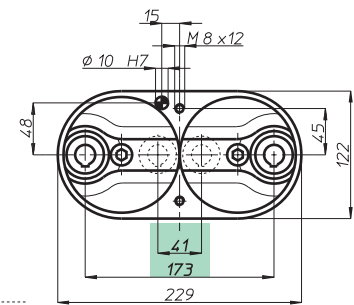
Accessori
Accessories

Appendice tecnica
Technical supplement

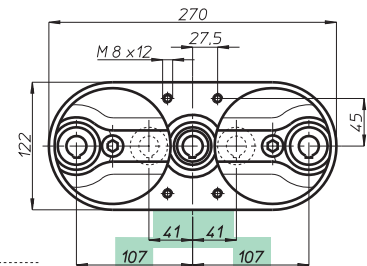
CAPACITA' FORATURA
DRILLING CAPACITY **ø20**

VH

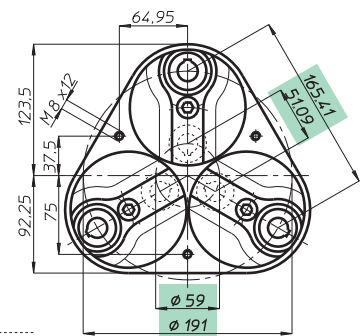
modello 18



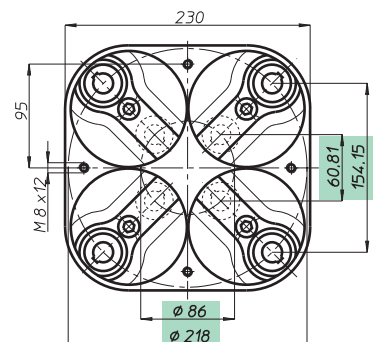
VH 182



VH 183 L



VH 183



VH 184

Testa modello Head type	VH 182	VH 183 L	VH 183	VH 184
Articolo Article	VH 182 P	VH 183 L P	VH 183 P	VH 184 P
Attacco utensile Type of spindle	ER 25 - ø max 16			
Articolo Article	VH 182 D	VH 183 LD	VH 183 D	VH 184 D
Attacco utensile Type of spindle	DIN 55058 - ø 28			
N. mandrini Spindles nr.	2	3	3	4
Campo di lavoro min.	41	41 + 41	ø 59	ø 86
Centre distances max.	173	107 + 107	ø 191	ø 218
Capacità foratura	Acciaio Rm 500 N/mm ² - ø 18			
Drilling capacity	Ghisa GG25 - ø 20			
Maschiatura Tapping	M 14			
Rapporto Ratio	1 - 1			
Velocità RPM	2500			
Peso Weight	Kg. 8,3	10,75	12	15,75

Teste multiple ad assi variabili • Variable axis heads

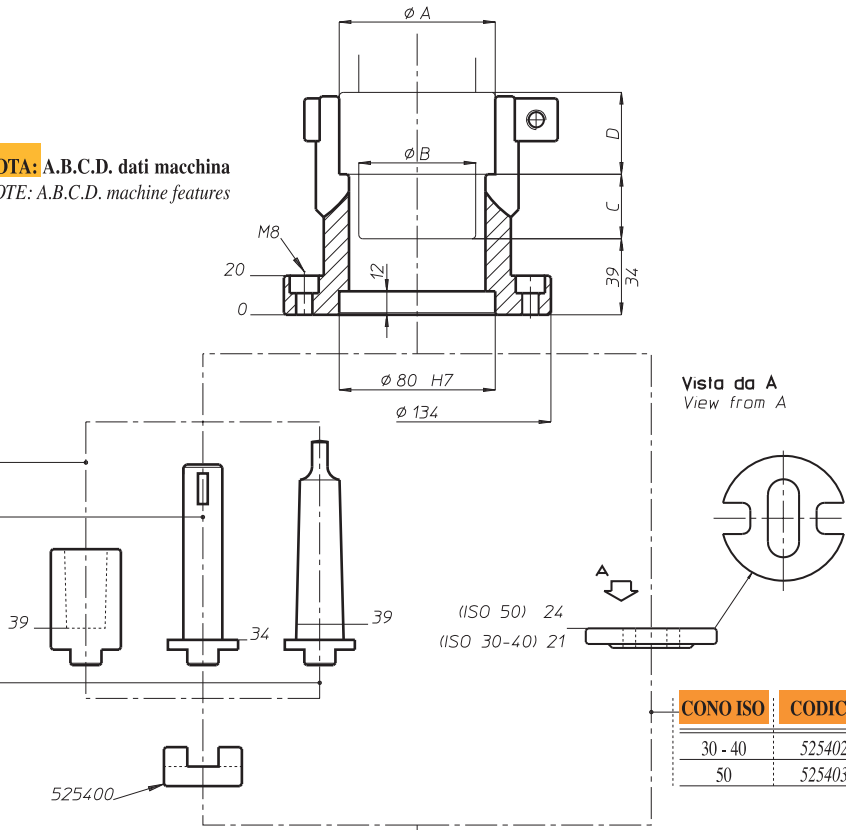
MANICOTTO DI COLLEGAMENTO - CONNECTION COLLAR

NOTA: A.B.C.D. dati macchina
NOTE: A.B.C.D. machine features

DIN 238	CODICE
B 16	011279
B 18	011280
B 22	011281
B 24	011282

DIN 55058	CODICE
16	525405
20	525406
28	525407
36	525408

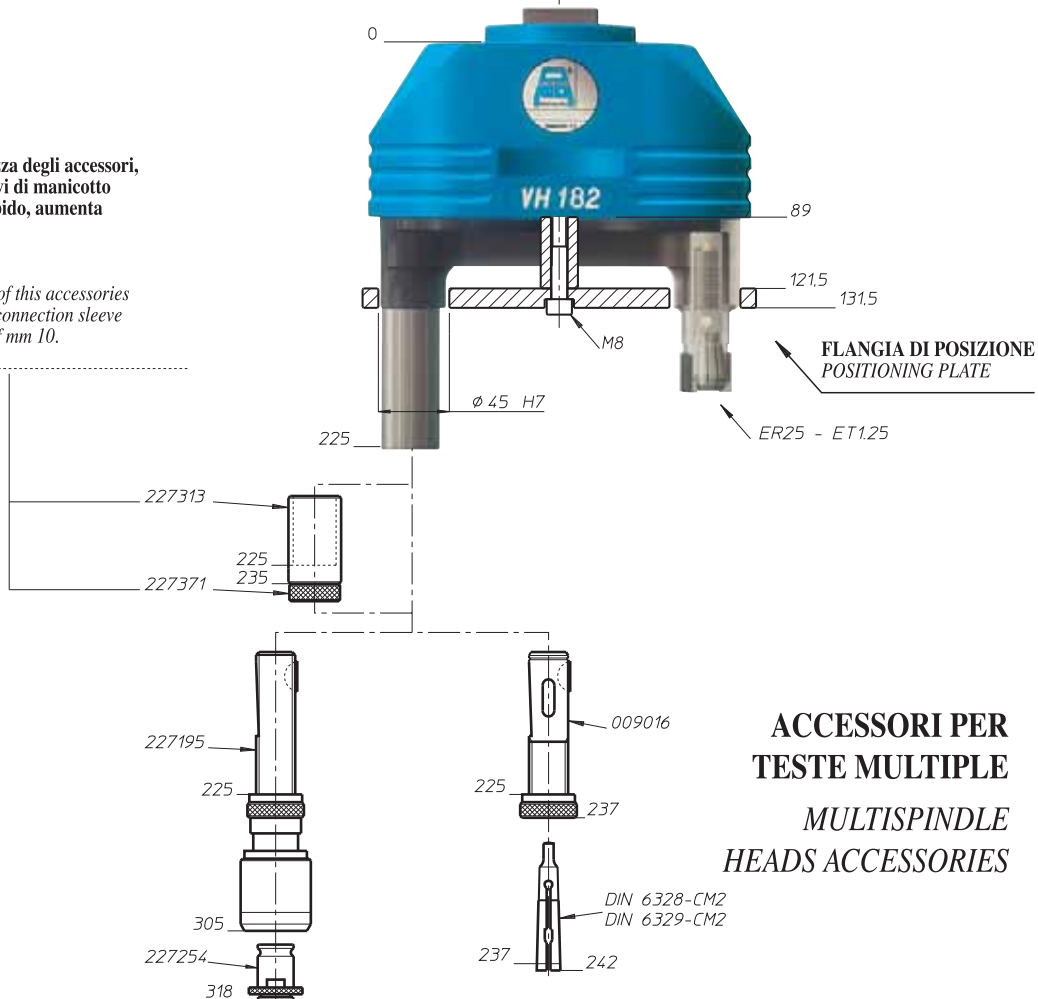
DIN 228	CODICE
CM 3	011125
CM 4	011130
CM 5	011135



NOTA:

La lunghezza degli accessori, comprensivi di manicotto attacco rapido, aumenta di mm 10.

NOTE:
The length of this accessories whit quick connection sleeve increases of mm 10.



ACCESSORI PER TESTE MULTIPLE MULTISPINDLE HEADS ACCESSORIES

Teste multiple ad assi variabili • Variable axis heads

TA

MO

HT

VH

TSI/TSX

T

MT-TC-TC3

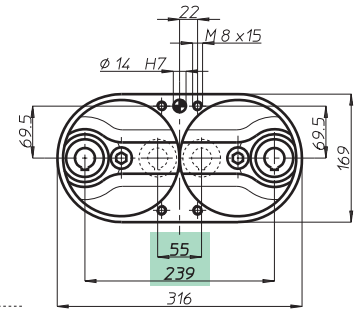
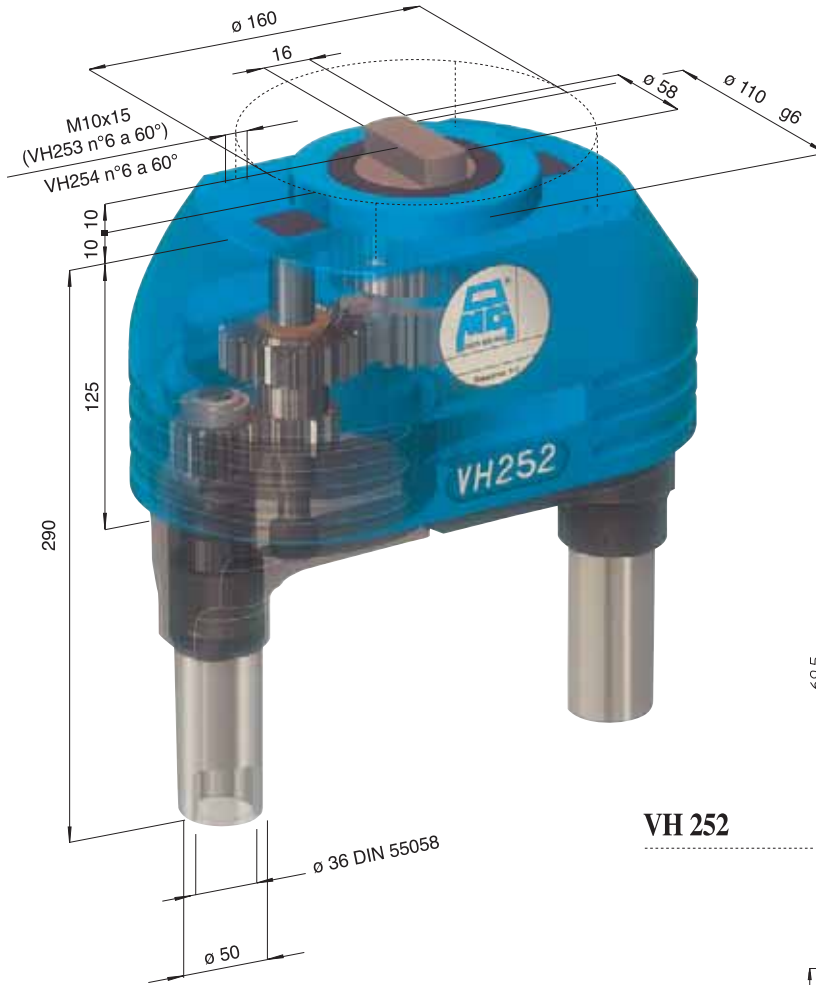
Accessori
Accessories

Appendice tecnica
Technical supplement

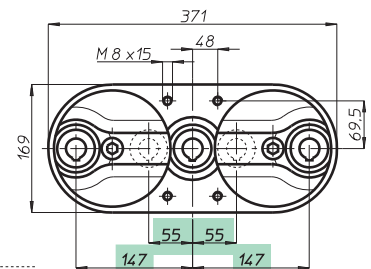
CAPACITA' FORATURA
DRILLING CAPACITY **ø28**

VH

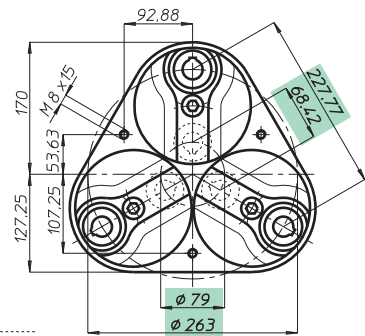
modello 25



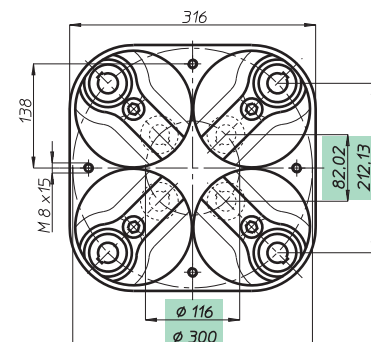
VH 252



VH 253 L



VH 253



VH 254

Testa modello Head type	VH 252	VH 253 L	VH 253	VH 254
Articolo Article				
Attacco utensile Type of spindle	DIN 55058 - ø 36			
Articolo Article	VH 252 D	VH 253 LD	VH 253 D	VH 254 D
Attacco utensile Type of spindle	DIN 55058 - ø 36			
N. mandrini Spindles nr.	2	3	3	4
Campo di lavoro min.	55	55 + 55	ø 79	ø 116
Centre distances max.	239	147 + 147	ø 263	ø 300
Capacità foratura	Acciaio Rm 500 N/mm ² - ø 25			
Drilling capacity	Ghisa GG25 - ø 28			
Maschiatura Tapping	M 20			
Rapporto Ratio	1 - 1			
Velocità RPM	2000			
Peso Weight	Kg. 27	32	39,5	52

Teste multiple ad assi variabili • Variable axis heads

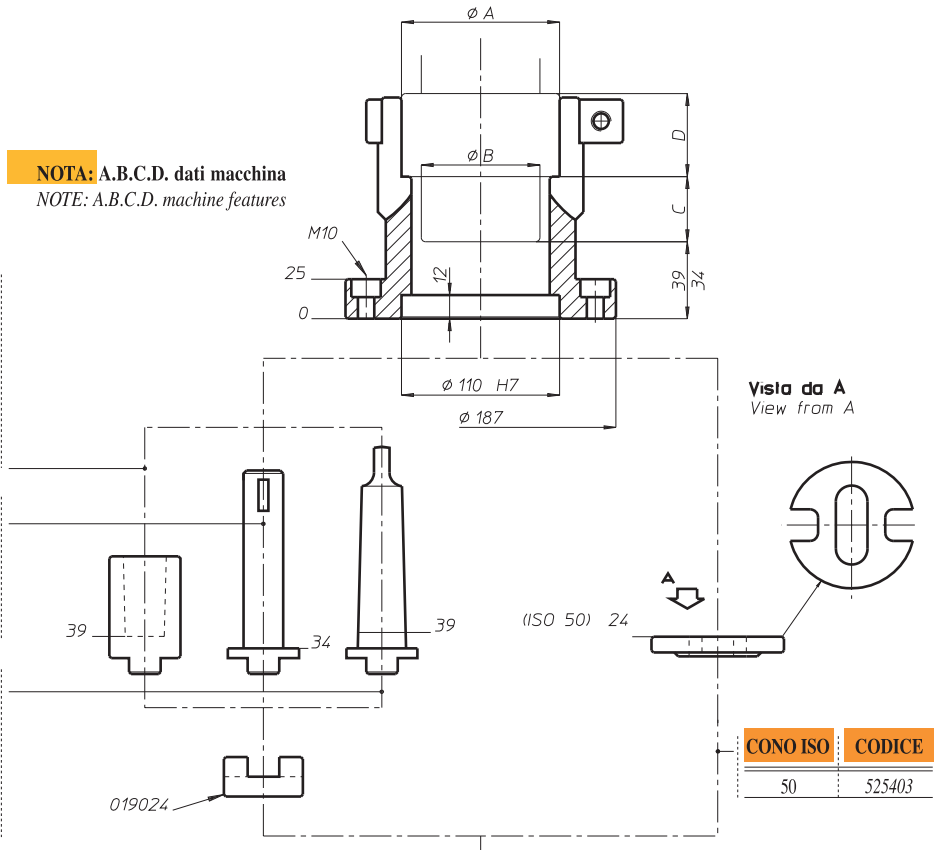
MANICOTTO DI COLLEGAMENTO - CONNECTION COLLAR

NOTA: A.B.C.D. dati macchina
 NOTE: A.B.C.D. machine features

DIN 238	CODICE
B 18	011280
B 22	011281
B 24	011282

DIN 55058	CODICE
16	525405
20	525406
28	525407
36	525408

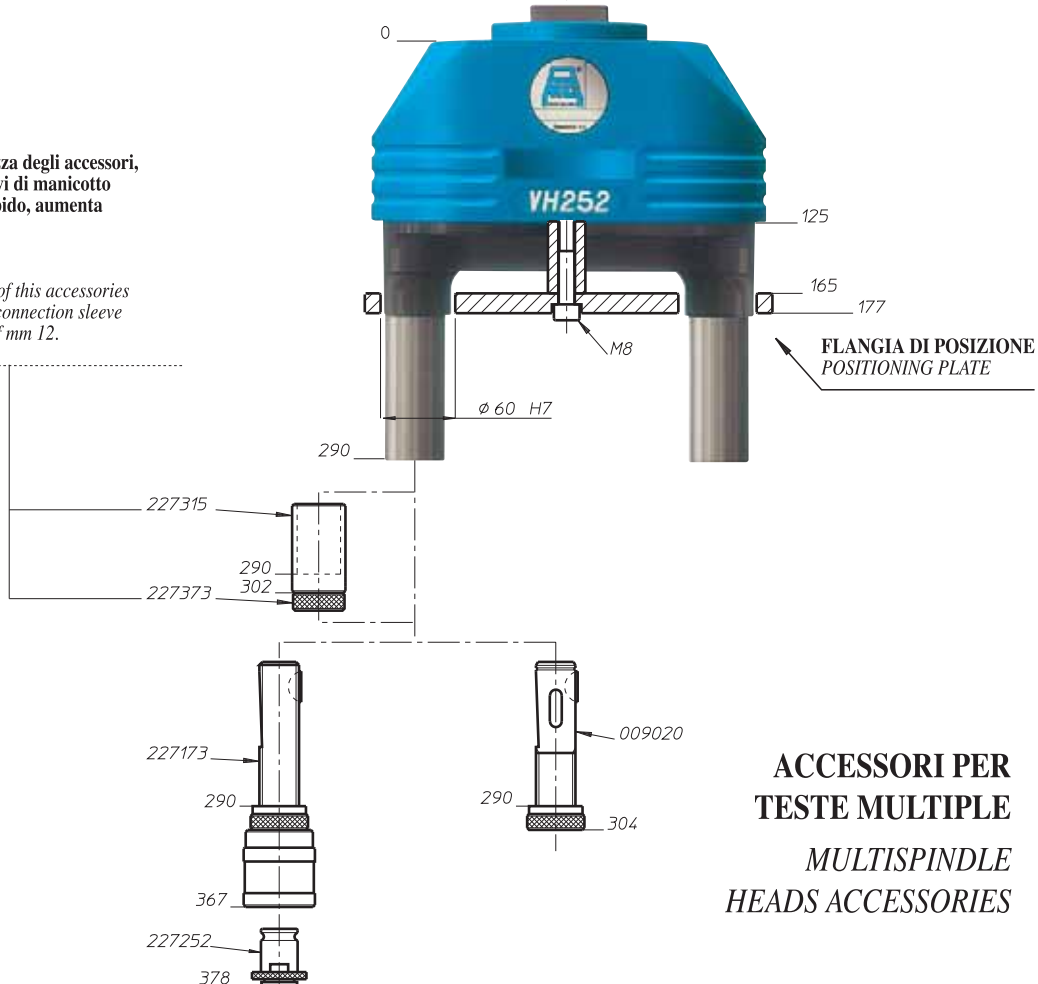
DIN 228	CODICE
CM 3	011125
CM 4	011130
CM 5	011135



NOTA:

La lunghezza degli accessori, comprensivi di manicotto attacco rapido, aumenta di mm 12.

NOTE:
 The length of this accessories whith quick connection sleeve increases of mm 12.



**ACCESSORI PER
 TESTE MULTIPLE
 MULTISPINDLE
 HEADS ACCESSORIES**

Teste multiple ad assi variabili • Variable axis heads

TA

MO

HT

VH

TSI/TSX

T

MT-TC-TC3

Accessori
 Accessories

Appendice tecnica
 Technical supplement

TA

MO

HT

VH

TSI/TSX

T

MT-TC-TC3

Accessori
AccessoriesAppendice tecnica
Technical supplement

Teste multiple ad assi variabili • Variable axis heads

CAPACITA' FORATURA
DRILLING CAPACITY $\phi 12$

VH

modello 101



Testa modello
Head type

**VH
101**

Articolo
Article

VH 101 W14

Attacco utensile
Type of spindle

$\phi 14$

Articolo
Article

VH 101 P

Attacco utensile
Type of spindle

ER16 - ϕ max 10

N. mandrini
Spindles nr.

1

Campo di lavoro min.

0

Centre distances max.

60

D

143

Capacità foratura

Acciaio Rm 500 N/mm² - $\phi 10$

Drilling capacity

Ghisa GG25 - $\phi 12$

Maschiatura
Tapping

M 10

Rapporto
Ratio

1 - 1

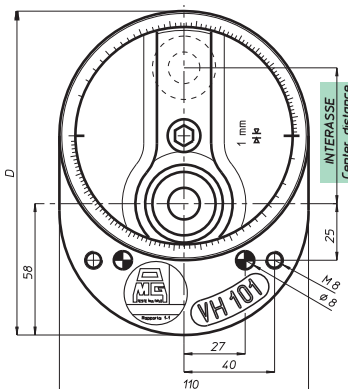
Velocità
RPM

3000

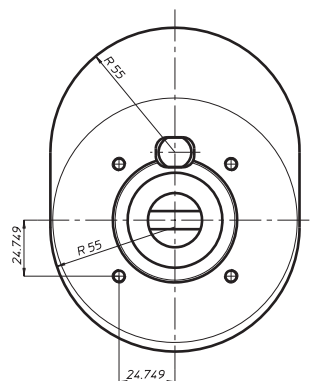
Peso
Weight

Kg.

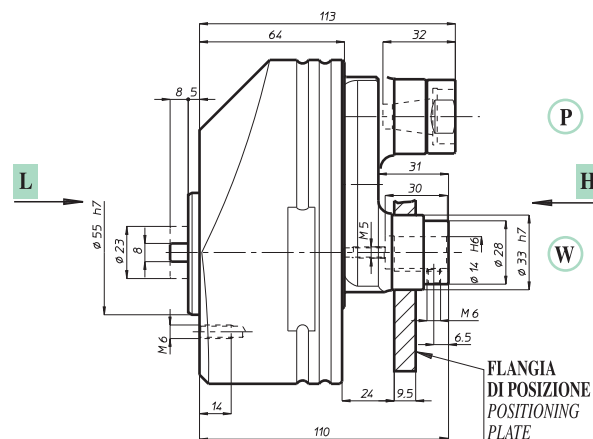
2,8



VISTA
VIEW H



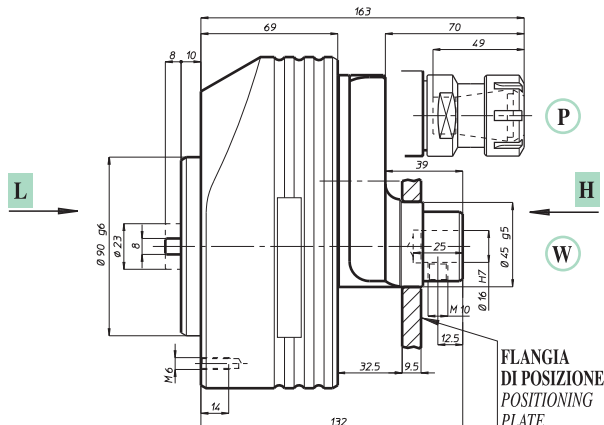
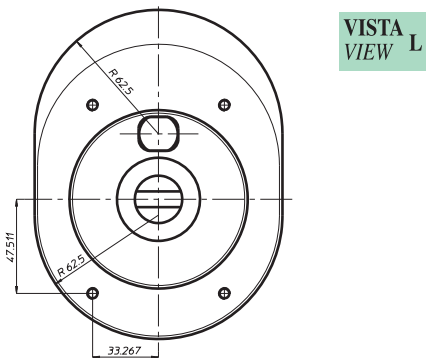
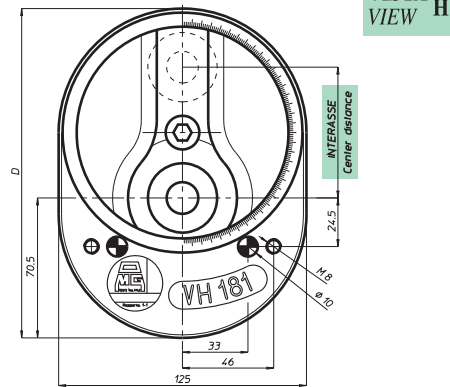
VISTA
VIEW L



CAPACITA' FORATURA
DRILLING CAPACITY $\phi 20$

VH

modello 181



Testa modello
Head type

**VH
181**

**VH
181-122**

Articolo
Article

VH 181 W16 VH 181-122-W16

Attacco utensile
Type of spindle

$\phi 16$

Articolo
Article

VH 181 P VH 181-122-P

Attacco utensile
Type of spindle

ER25 - ϕ max 16

N. mandrini
Spindles nr.

1

1

Campo di lavoro min.

0

56

Centre distances max.

66

122

D

166

222

Capacità foratura

Acciaio Rm 500 N/mm² - $\phi 18$

Drilling capacity

Ghisa GG25 - $\phi 20$

Maschiatura
Tapping

M 14

Rapporto
Ratio

1 - 1

Velocità
RPM

2500

Peso
Weight Kg.

4,1

6,4

Teste multiple ad assi variabili • Variable axis heads

TA

MO

HT

VH

TSI/TSX

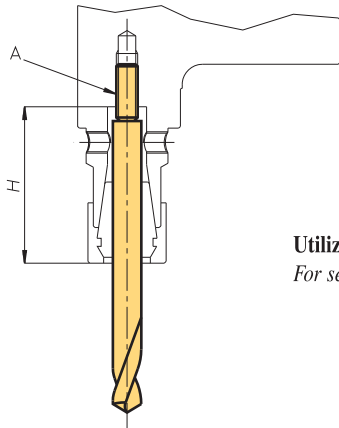
T

MT-TC-TC3

Accessori
Accessories

Appendice tecnica
Technical supplement

FORATURA CON PINZE ER
DRILLING WITH ER COLLETS

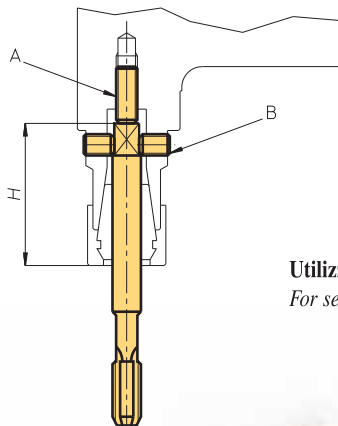


Testa Head	VH 04	VH 06	VH 08	VH 10	VH 13	VH 18
H max	23	27	44	44	52	49

NOTA: nella testa VH04 e VH06 la vite A non è presente
NOTE: in the head VH04 and VH06 there isn't the screw A

Utilizzare la vite A sinistra per registrare l'altezza utensile
For setting the tool length, use the left screw A

MASCHIATURA CON PINZE ER
TAPPING WITH ER COLLETS



Testa Head	VH 04	VH 06	VH 08	VH 10	VH 13	VH 18
H	23	27	38	38	44	49

NOTA: nella testa VH04 e VH06 la vite A non è presente
NOTE: in the head VH04 and VH06 there isn't the screw A

Utilizzare la vite A per registrare l'altezza utensile e le viti B per bloccare il quadro del maschio
For setting the tool length, use the screw A; locking the tap square with the screws B



VH 042 LP	n° 2 mandrini a pinza, min. 24 max. 84	2 spindles for spring collets min. 24 max. 84
VH 042P R. 1-2	n° 2 mandrini a pinza, min. 12 max. 72 rapp. 1-2	2 spindles for spring collets min. 12 max. 72 ratio 1-2
VH 062 LP	n° 2 mandrini a pinza, min. 35 max. 111	2 spindles for spring collets min. 35 max. 111
VH 062 LD	n° 2 mandrini DIN 55058-8 min. 35 max. 111	2 spindles DIN 55058-8 min. 35 max. 111
VH 062/1	n° 1 mandrino a pinza, min. 8,5 max. 46,5	1 spindle for spring collets min. 8,5 max. 46,5
VH 062P R.1-2	n° 2 mandrini a pinza min. 17 max. 93 rapp. 1-2, 067	2 spindles for spring collets min. 17 max. 93 ratio 1-2,067
VH 062P CNC40	n° 2 mandrini a pinza min. 17 max. 93 completa di cono ISO 40	2 spindles for spring collets min. 17 max. 93 with shank ISO 40
VH 063P CNC40	n° 3 mandrini a 120° a pinza min. 27 max. 103 completa di cono ISO 40	3 spindles at 120° for spring collets min. 27 max. 103 with shank ISO 40
VH 064P CNC40	n° 4 mandrini a 90° a pinza min. 41 max. 117 completa di cono ISO 40	4 spindles at 90° for spring collets min. 41 max. 117 with shank ISO 40
VH 064/3P	n° 3 mandrini a pinza min. 41 max. 117	3 spindles for spring collets min. 41 max. 117
VH 081 P	n° 1 mandrino a pinza min. 0 max. 42	1 spindle for spring collets min. 0 max. 42
VH 082 LP	n° 2 mandrini a pinza min. 48 max. 132	2 spindles for spring collets min. 48 max. 132
VH 082 LD	n° 2 mandrini DIN 55058 - 10 min. 48 max. 132	2 spindles DIN 55058 - 10 min. 48 max. 132
VH 082 P R. 1-2	n° 2 mandrini a pinza min. 24 max. 108 rapp. 1-2	2 spindles for spring collets min. 24 max. 108 ratio 1-2
VH 082P CNC 40	n° 2 mandrini a pinza min. 24 max. 108 completa di cono ISO 40	2 spindles for spring collets min. 24 max. 108 with shank ISO 40
VH 082PFM	n° 2 mandrini a pinza min. 24 max. 108 fora/maschia	2 spindles for spring collets min. 24 max. 108 drilling and tapping
VH 083 LP CNC40	n° 3 mandrini in linea a pinza min. 24+24 max. 66+66 completa di cono ISO 40	3 spindles on line for spring collets min. 24+24 max. 66+66 with shank ISO 40
VH 084P CNC 40	n° 4 mandrini a pinza min. 53,5 max. 137,5 completa di cono ISO 40	4 spindles for spring collets min. 53,5 max. 137,5 with shank ISO 40
VH 084/3P	n° 3 mandrini a pinza min. 53,5 max. 137,5	3 spindles for spring collets min. 53,5 max. 137,5
VH 102 LP	n° 2 mandrini a pinza min. 56 max. 148	2 spindles for spring collets min. 56 max. 148
VH 102 LD	n° 2 mandrini DIN 55058-12 min. 56 max. 148	2 spindles DIN 55058-12 min. 56 max. 148
VH 102 P CNC 40	n° 2 mandrini a pinza min. 28 max. 120 completa di cono ISO 40	2 spindles for spring collets min. 28 max. 120 with shank ISO 40
VH 102P R. 1-2	n° 2 mandrini a pinza min. 28 max. 120 rapporto 1-2	2 spindles for spring collets min. 28 max. 120 ratio 1-2
VH 102 PFM	n° 2 mandrini a pinza min. 28 max. 120 fora/maschia	2 spindles for spring collets min. 28 max. 120 drilling and tapping
VH 102-220 P	n° 2 mandrini a pinza min. 128 max. 220	2 spindles for spring collets min. 128 max. 220
VH 102-300 P	n° 2 mandrini a pinza min. 208 max. 300	2 spindles for spring collets min. 208 max. 300
VH 104D R.1-2	n° 4 mandrini a 90° DIN 55058-12 min. 60 max. 152 rapp. 1-2	4 spindles at 90° DIN 55058-12 min. 60 max. 152 ratio 1-2
VH 104P CNC50	n° 4 mandrini a 90° a pinza min. 60 max. 152 completa di cono ISO 50	4 spindles at 90° for spring collets min. 60 max. 152 with shank ISO 50
VH 132 LP	n° 2 mandrini a pinza min. 70 max. 186	2 spindles for spring collets min. 70 max. 186
VH 132 LD	n° 2 mandrini DIN 55058-16 min. 70 max. 186	2 spindles DIN55058-16 min. 70 max. 186
VH 132D CNC50	n° 2 mandrini DIN 55058-16 min. 35 max. 151 completa di cono ISO 50	2 spindles DIN55058-16 min. 35 max. 151 with shank ISO 50
VH 132P CNC50	n° 2 mandrini a pinza min. 35 max. 151 completa di cono ISO 50	2 spindles for spring collets min. 35 max. 151 with shank ISO 50
VH 132 W12	n° 2 mandrini foro cilindrico diam. 12 min. 35 max. 151	2 spindles diam. 12 min. 35 max. 151
VH 132-260 D	n° 2 mandrini DIN 55058-16 min. 144 max. 260	2 spindles DIN 55058-16 min. 144 max. 260
VH 134P CNC50	n° 4 mandrini a 90° a pinza, min. 75 max. 191 completa di cono ISO 50	4 spindles at 90° for spring collets, min. 75 max. 191 with shank ISO 50
VH 181 R 1-2	n° 1 mandrino diam. 16 min. 16,5 max. 82,5 rapp. 1-2	1 spindle diam. 16, min. 16,5 max. 82,5 ratio 1-2
VH 182 LP	n° 2 mandrini a pinza, min. 82 max. 214	2 spindles for spring collets, min. 82 max. 214
VH 182 LD	n° 2 mandrini DIN 55058-28 min. 82 max. 214	2 spindles DIN 55058-28 min. 82 max. 214
VH 182 W16	n° 2 mandrini foro cilindrico diam. 16 min. 41 max. 173	2 spindles diam 16, min. 41 max. 173
VH 182 P CNC 50	n° 2 mandrini a pinza, min. 41 max. 173 completa di cono ISO 50	2 spindles for spring collets, min. 41 max. 173 with shank ISO 50
VH 182 P R.1-2	n° 2 mandrini a pinza, min. 41 max. 173 rapp. 1-2	2 spindles for spring collets, min. 41 max. 173 ratio 1-2
VH 182D R. 1-2	n° 2 mandrini DIN 55058-28 min. 41 max. 173 rapp. 1-2	2 spindles DIN 55058-28, min. 41 max. 173 ratio 1-2
VH 183 L W16	n° 3 mandrini foro cilindrico diam. 16 min. 41+41 max. 107+107	3 spindles diam.16 min. 41+41 max. 107+107
VH 252 LD	n° 2 mandrini DIN 55058-36 min. 110 max. 294	2 spindles DIN 55058-36, min. 110 max. 294

Teste multiple ad assi variabili • Variable axis heads

*galleria
fotografica*





Teste multiple ad assi variabili • Variable axis heads