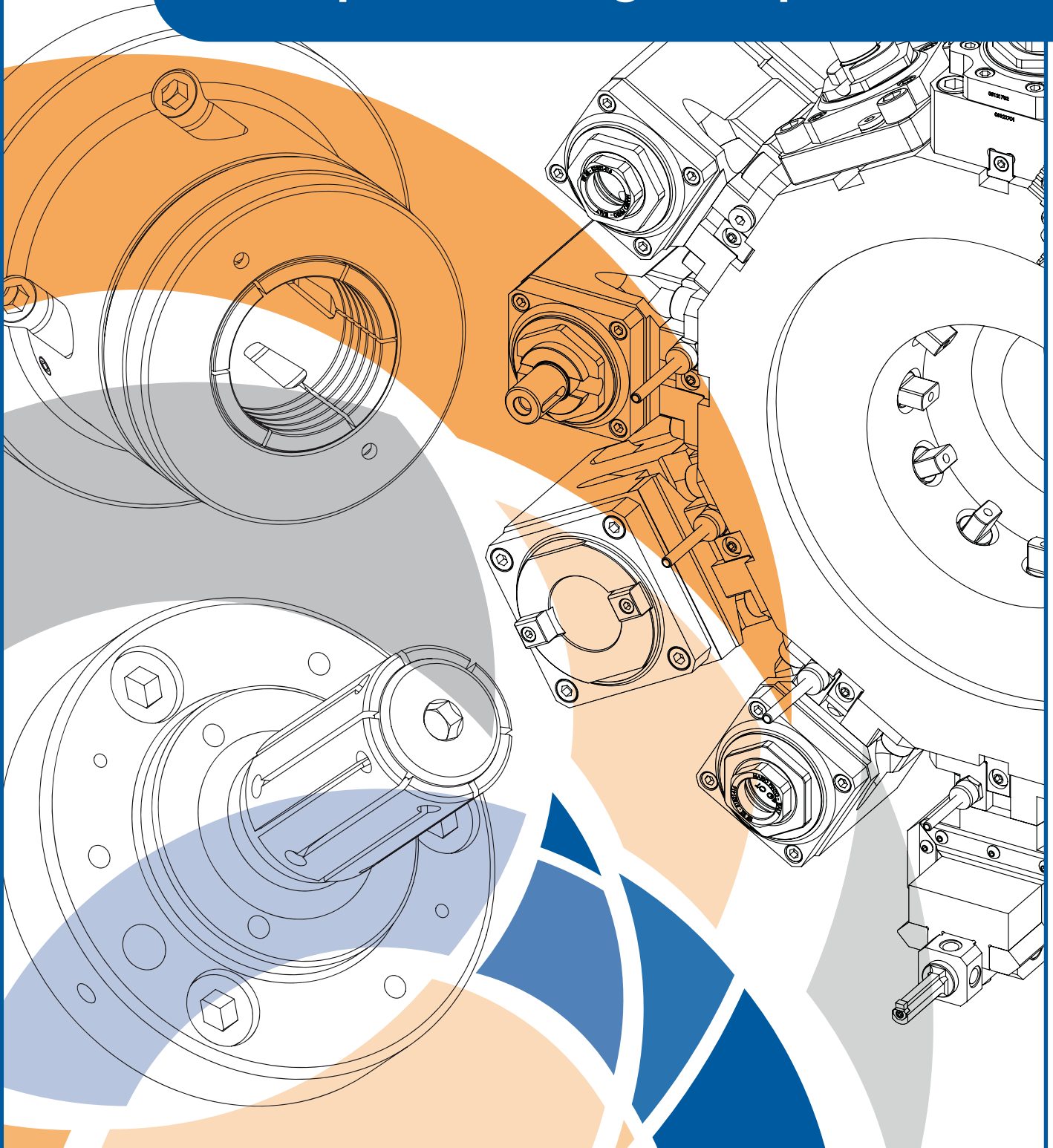




*MARIO PINTO*



Complete range of products



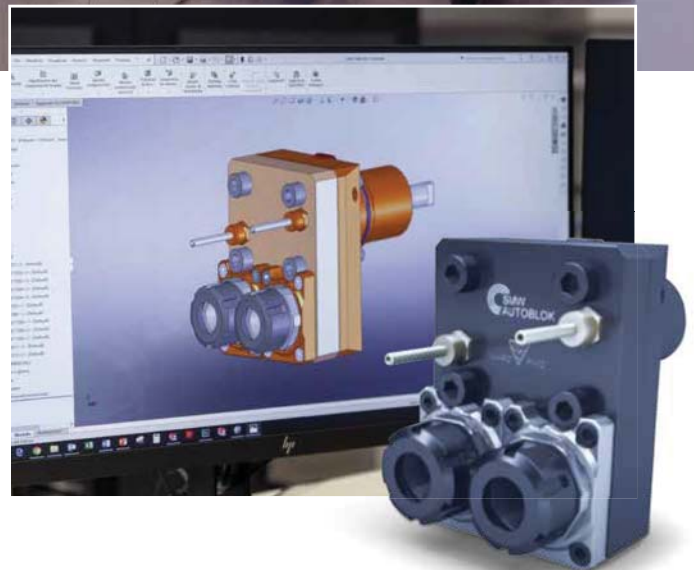
# MARIO PINTO SPA - SMW-AUTOBLOK group

## Specialist in clamping systems, live and static tools



Established in Torino in 1922, **MARIO PINTO** has been developing and manufacturing clamping systems for machine tools for nearly 100 years. High-precision and reliable products, created to meet specific needs, fabricated with advanced technology and carefully tested in our plants.

By beginning of the 90s, the **“Live Tools and Toolholders for turning centres”** have been introduced in our program, soon becoming a major product in our sales, one more success story in the SMW-Autoblok group.



**SMW-AUTOBLOK** is a global corporate group, among the leading manufacturers worldwide of workholding for turning and grinding on machine tools. Manufacturing – realised with top quality raw materials, modern machines, equipments and robots – is based in Meckenbeuren (Germany), Caprie and Pavia. The wide range of standard products assures quick delivery service for a large number of applications.

Decades of experience in the clamping system and the uninterrupted technological innovation, based on a direct contact with customers, are the main ingredients of our success.

The worldwide extended sales net assures a good after-market service in almost all countries.

Quality and reliability are not our goals, rather our premises to assure the desired results to every single customer.

EMPLOYEES	800
TURNOVER (EUR/MIL)	180
MANUFACTURING PLANTS	11 in ITALY, GERMANY, UK, USA, CHINA, INDIA
BRANCHES	in 16 Countries
AGENCIES	in 40 Countries

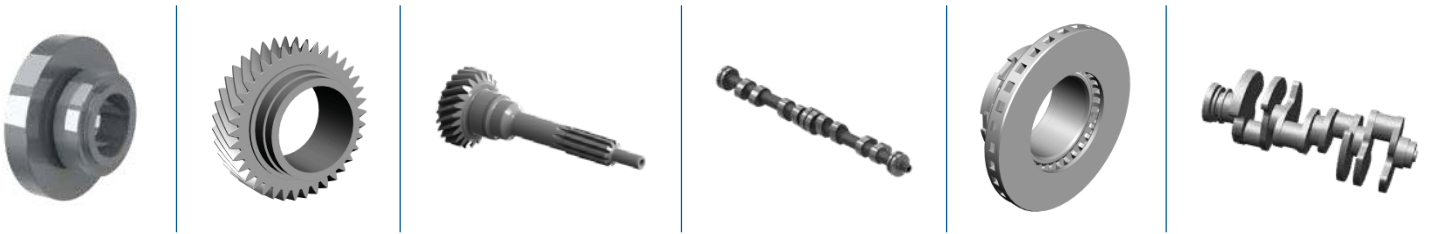
## OUR PRODUCTS

Main purpose of present catalogue is offering a quick and complete view of our products range, including clamping systems and live&static tooling, both standard and turnkey customized.

We analyse specific needs of customers and support them in the choice of the right product. Finding good solutions for complex clamping applications is part of our mission.

Drawing of products, features and information on the possible applications can be found and downloaded from our websites [www.mariopinto.it](http://www.mariopinto.it) and [www.live-tooling.com](http://www.live-tooling.com); where you can also see the list of the main exhibitions, open-houses and events we are attending all over the world, either directly or through our branches.

Our youtube channel **MARIO PINTO/SMW Autoblok Live Tooling** provides visual examples of machining operations carried out with different live tools models.



## INDUSTRIES

Main sectors of application for our products:

### AUTOMOTIVE



### OCTG



### INDUSTRIAL EQUIPMENT



### OFF HIGHWAY



### AEROSPACE



## MANUAL CHUCKS

### DG



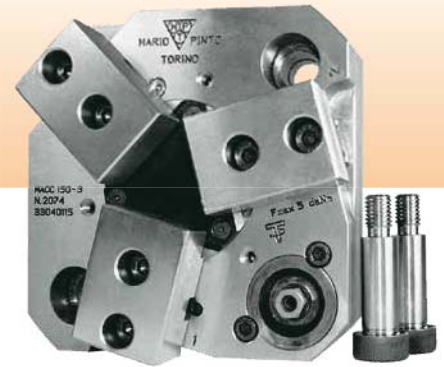
- Double guided chuck
- Spheroidal GS600 cast iron body
- Normal or special through hole
- 3 and 4-jaw execution
- Frontal mounting
- Size 180 to 500 mm.

### SGS



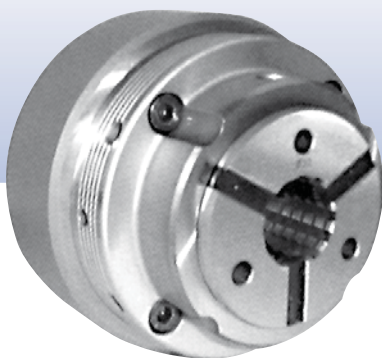
- Steel body
- Rear or/and frontal mounting
- Mounting to DIN6350
- 3 and 4-jaw execution
- Size 80 to 800 mm.

### MACC



- Static manual chucks
- For machining centres, tombstones and tables
- 3 and 4-jaw models
- Frontal operation
- Size 105 to 250 mm.

### KSZ AZ/DZ/NZ



- Pull-to-close collet chucks
- Quick collet change
- Size from 42 to 100
- Steel collets, smooth or with double serration
- Collet changing unit available

### ACS



- 3 or 6 columns
- External or internal clamping
- High-precision
- High rpm
- External size 110 to 450 (ACS-E), 130 to 300 (ACS-I)

### EM-A/EM-AL



- Expanding mandrel with pull-down sleeves
- Normal and long version
- Size 1 to 11
- Clamping dia. from 14.7 to 101.7 mm
- Sleeves with increased diameter on demand
- Manual operating kit on demand

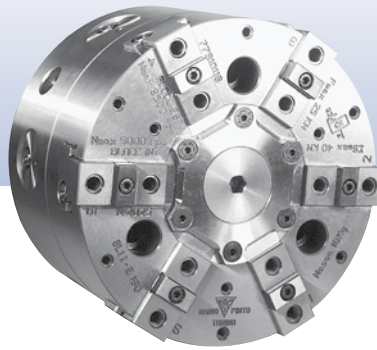
## POWER-OPERATED CHUCKS

### PIATF-4GR



- 4-jaw independent chucks
- Steel body
- Two-piece jaws
- External size from 500 to 1000 mm.

### BL 1-2



- 2+2+2 jaws, balanced 2 by 2
- Internal & external clamping/external only
- Centrifugal force compensation
- Central passages for lubrication and compressed air
- Lever ratio 1:1 or 1:2
- Size 160 to 630 mm.

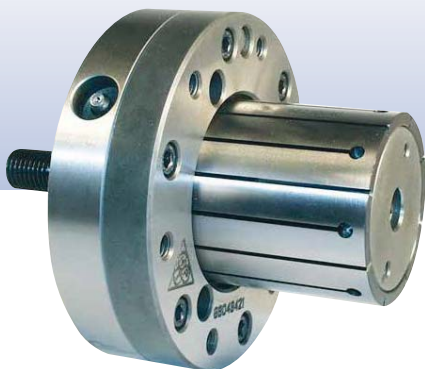
### PPBE



- Push-to-close collet chucks
- Collets to DIN6343
- Machining of bars dia. 8-80 mm.
- Size from 42 to 80
- Plain back or ISO-A direct mtg.

## STATIONARY CHUCKS

### EM-B



- Expanding mandrel
- Size 0 to 4
- Clamping dia. from 16 to 129.5 mm

### EM-C/EM-CL



- Expanding mandrel with pull-down sleeves
- Normal and long sleeves
- Clamping dia. from 5.8 to 16.2 mm

### SHH/SHP



- Bar machining
- Built-in pneumatic or hydraulic cylinder
- Size 42 and 65
- Smooth or double serrated steel collets

**TOOLHOLDERS**

**SUPPORT**

**STATIC RADIAL TOOLHOLDER**



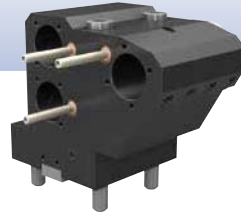
- Available with different shanks
- For operations with Y axis

**STATIC RADIAL TOOLHOLDER**



- Special angulate model
- For turrets with half-position indexing

**BORING BAR HOLDER**



- Main and secondary spindle
- External and internal coolant

**SHAFT SUPPORT**



- With location on bearings
- Different models on demand

**LIVE TOOLS**

**STRAIGHT LIVE TOOL**



- Also available in offset
- Ratio 1:1, multiplied, demultiplied

**ANGULAR LIVE TOOL**



- Also available in offset
- Ratio 1:1, multiplied, demultiplied

**SPECIAL LIVE TOOL**



- Developed specific on demand
- Customized

**MODULAR LIVE TOOL**



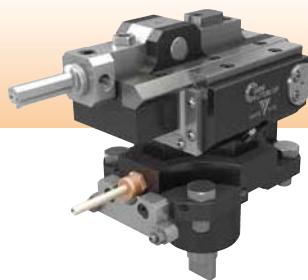
- Axial and radial version
- Quick change HSK, ISO/BT or polygonal

**TILTING LIVE TOOL**



- Models for different machines/turrets
- Wide range of collet nuts

**SLOTING TOOL**



- Available with stroke 25, 35, 65
- Slots up to 10 mm.

**HOBBING UNIT**



- Interchangeability of the hobbing shaft
- Possible usage as cut-holder

**STEADY REST FOR TURRET**



- Available for various machines
- Different models on demand

## CUSTOM APPLICATION

We develop and manufacture since a number of years special and semi-special clamping solutions, to satisfy most clamping needs.

Brake disks and brake drums, pistons and gearboxes, bearings and gears: our projects are developed in cooperation with the end user and often even with the machine tool builder; taking into consideration working cycles, materials and tolerances.

Over 10.000 solutions achieved during the years, most of them obtained from standard products, to assure whenever possible reasonable prices and sustainable delivery times.

Please contact with our sales assistants or your area agent, send the dimensioned part drawing, your machining needs and all additionally required information.

Our staff will analyse your information and elaborate a technical and economical proposal as quickly as possible.



## OUR TECHNOLOGY



### Drive transmission with super compact drive system (patented)

The drive transmission is the "heart" of the Live Tool. Before starting the production of our Live Tools, we analysed different drive systems available on the market.

We finally decided to design and patent a special and innovative drive system offering greater reliability and durability. Our competitors generally use a drive key on the outside of the shaft and inside the gear, generating a tangential (indirect) transmission.

Possible consequences of this system:

- weakening of the shaft and the gear;
- low torque transmission;
- vibration, breakage of keys and shafts.

Our patented, SUPERCOMPACT drive system avoids all described problems.

The ground shaft and the gear are coupled in a single operation, in a square or hexagonal housing.

All surfaces including the centering diameter are ground.

# WORLDWIDE SALES NET



The main manufacturing facilities of the SMW-Autoblok group are located in Caprie, Torino and Pavia (Italy) and in Meckenbeuren (Germany). Other facilities have been established in the UK, USA, Japan, China, India, Spain, France, Mexico, Taiwan, Czech Republic, Russia, South Korea, Poland and Sweden.

The worldwide sales net covers most countries very accurately, basing on a deep cooperation between our inside sales staff and qualified salesmen and area agents.



**MARIO PINTO**



## MARIO PINTO S.p.A.

Strada delle Cacce, 21 - 10135 Torino - Italy  
 Ph. +39 0113918811 (r.a.) - Fax +39 0113918807  
[www.mariopinto.it](http://www.mariopinto.it) - [www.live-tooling.com](http://www.live-tooling.com)  
 E-mail: [info@mariopinto.it](mailto:info@mariopinto.it)

Follow us on:



COMPANY WITH  
 QUALITY SYSTEM  
 CERTIFIED BY DNV GL  
 = ISO 9001 =

AZIENDA CON SISTEMA  
 DI GESTIONE QUALITÀ  
 CERTIFICATO DA DNV GL  
 = ISO 9001 =

DISTRIBUTED BY:



**ZIBTRPRO**  
 tehnologija obdelave · vpenjalni sistemi