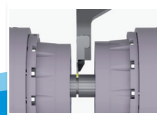
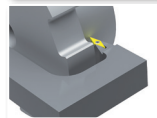
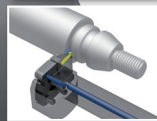
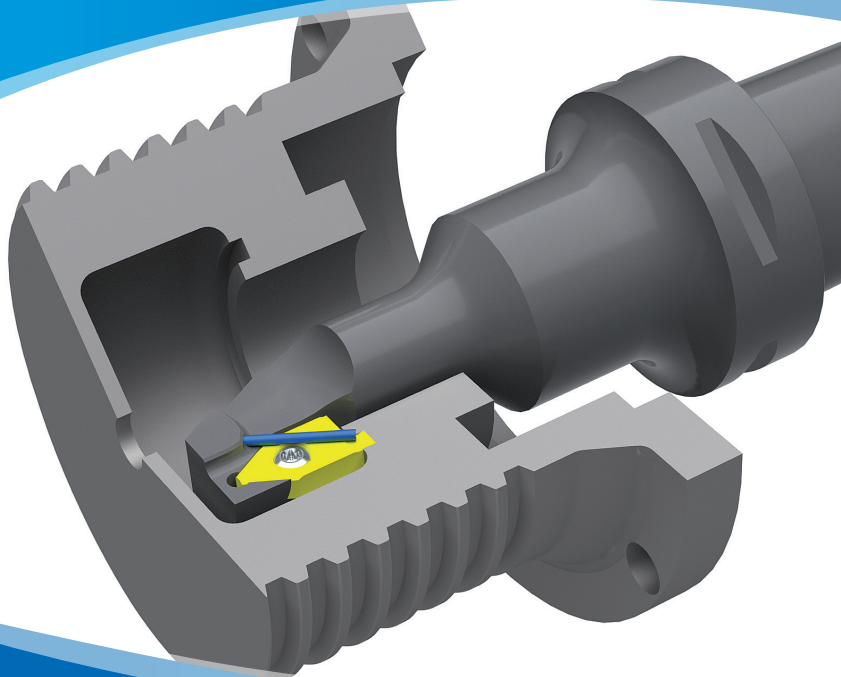


Individuelle Lösungen
Individual solutions

 **KEMMER**
HARTMETALLWERKZEUGE GmbH



GRIPLock[®]

Special Tooling

Warum Lösungen von Kemmer?

Prozesse und Technologien stehen im ständigen Wandel. Das bringt Herausforderungen für Lieferanten, Anwender und Dienstleister mit sich. Kemmer ist ihr Partner, wenn es um die Lösung dieser Herausforderungen im Bereich Stechen geht!



Why solutions by Kemmer?

Machining operations are continuously improving. That means that manufacturer, service provider and suppliers have to adapt to new challenges. Kemmer is your production and service partner solving these new challenges.



Kompetente Beratung durch jahrelange Erfahrung und Spezifikation.
Competent consulting based on long-time experience.



Zeitnahe Angebote und Lösungsvorschläge.
Timely offers containing solutions.



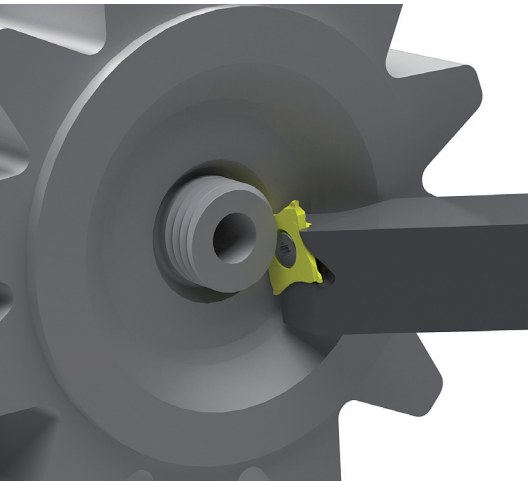
Kurze Lieferzeiten.*
Short delivery times.*



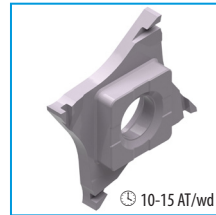
Hohe Qualität zu fairen Preisen.
High quality and fair prices.

* Lieferzeiten sind abhängig von Design, Mengen und Aufwand. Auf Ihre Anfragen erhalten Sie ein individuelles Angebot, das die entsprechenden Lieferzeiten enthält. * **Delivery times depend on design, quantities and production time. On your enquiries, you'll receive an individual quotation containing the delivery time.**

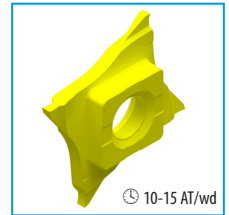
Multicut 4



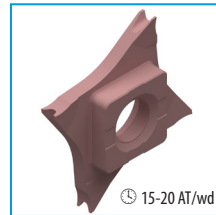
AT=Arbeitstage | wd=working days



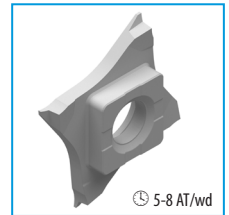
Tilox beschichtet | coated



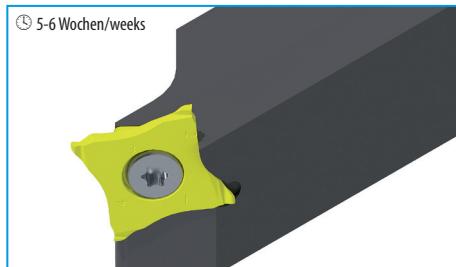
Nanospeed beschichtet | coated



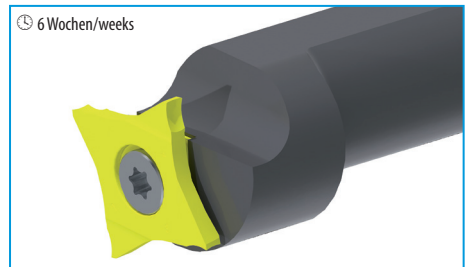
Hardlox 2 beschichtet | coated



unbeschichtet | uncoated



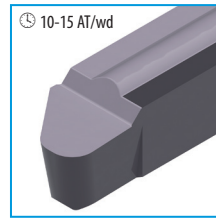
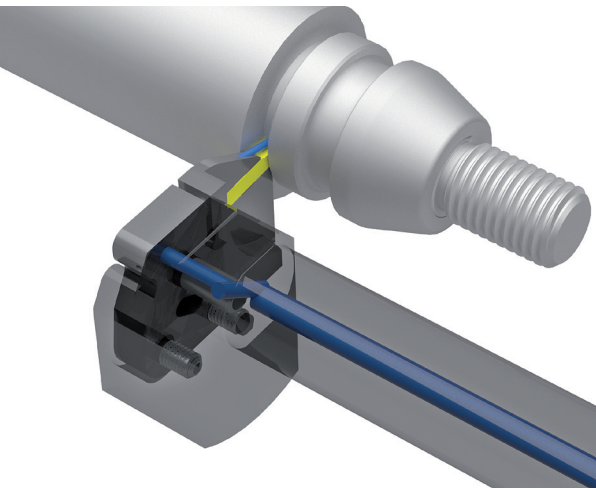
Beispiel: 45° Halter | Example: 45° holder



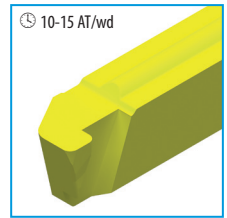
Beispiel: Rundschafthalter (Außenbearbeitung)
Example: shaft holder for external machining

P92 Twin Power

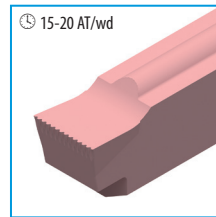
Denn doppelt hält besser!
Because double made is always better!



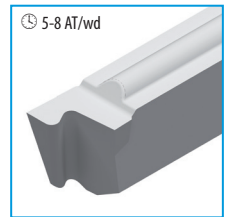
10-15 AT/wd
Tilox beschichtet | coated



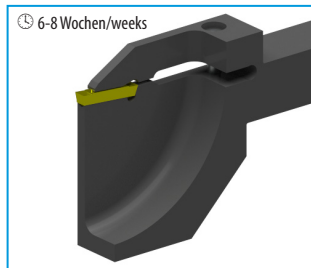
10-15 AT/wd
Nanospeed beschichtet | coated



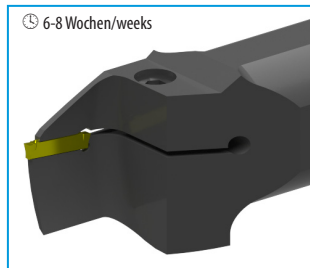
15-20 AT/wd
Hardlox 2 beschichtet | coated



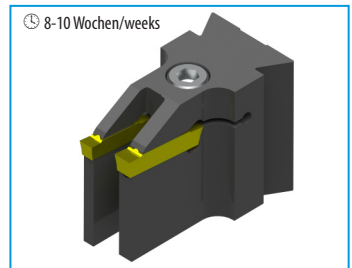
5-8 AT/wd
unbeschichtet | uncoated



6-8 Wochen/weeks
Beispiel: Radialverstärkter Spezialhalter
Example: reinforced special holder



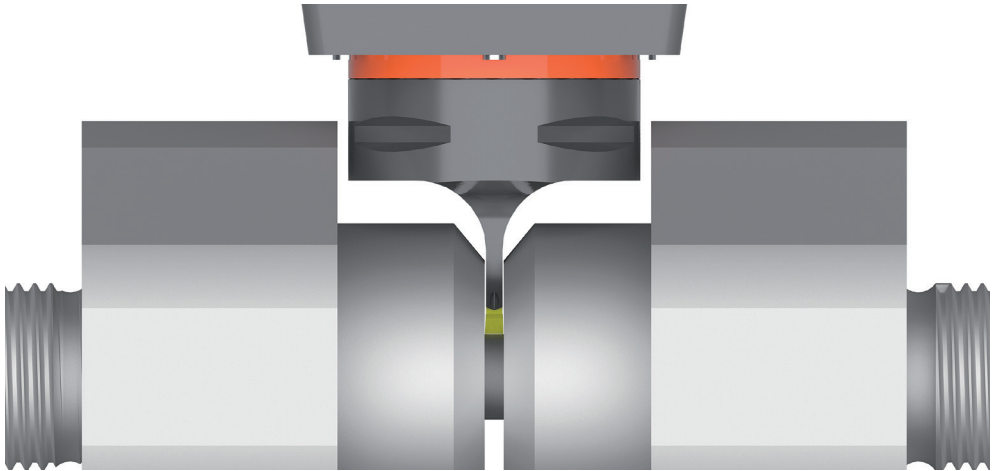
6-8 Wochen/weeks
Beispiel: Innenaxialbohrstange
Example: internal face-grooving boring bar



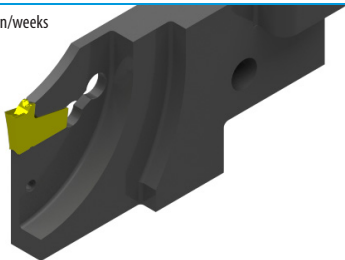
8-10 Wochen/weeks
Beispiel: ATWIN Kasette
Example: ATWIN cartridge

F16 Abstechen/Parting-off

Wir gehen der Sache auf den Grund!
Getting right to the bottom!

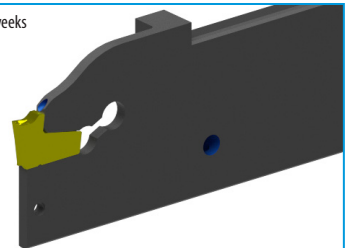


🕒 6 Wochen/weeks



Beispiel: Radialversteifte GLM Kassette
Example: reinforced GLM cartridge

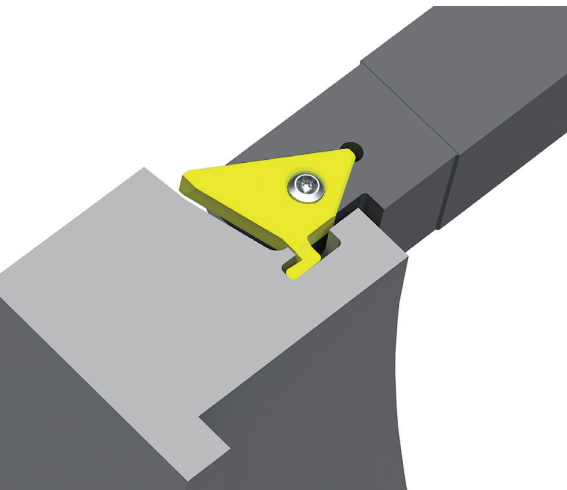
🕒 6-8 Wochen/weeks



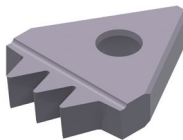
Beispiel: Verstärkter Abstechträger mit Innenkühlung
Example: reinforced parting-off blade with internal cooling

F92 Formstechen/Profiling

Ab und zu muss man mal um die Ecke denken!
Sometimes just think around the corner!



🕒 10-15 AT/wd



Tilox beschichtet/*coated*

🕒 10-15 AT/wd



Nanosppeed beschichtet/*coated*

🕒 15-20 AT/wd



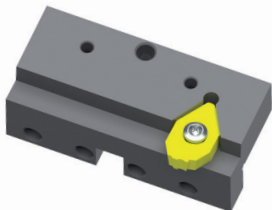
Hardlox 2 beschichtet/*coated*

🕒 5-8 AT/wd



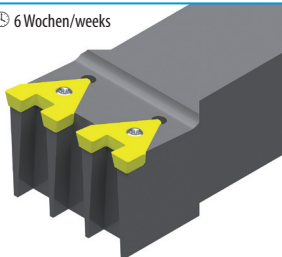
unbeschichtet/*uncoated*

🕒 6-8 Wochen/weeks



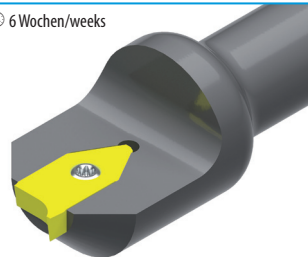
Beispiel: Grundhalter
Example: tool block

🕒 6 Wochen/weeks

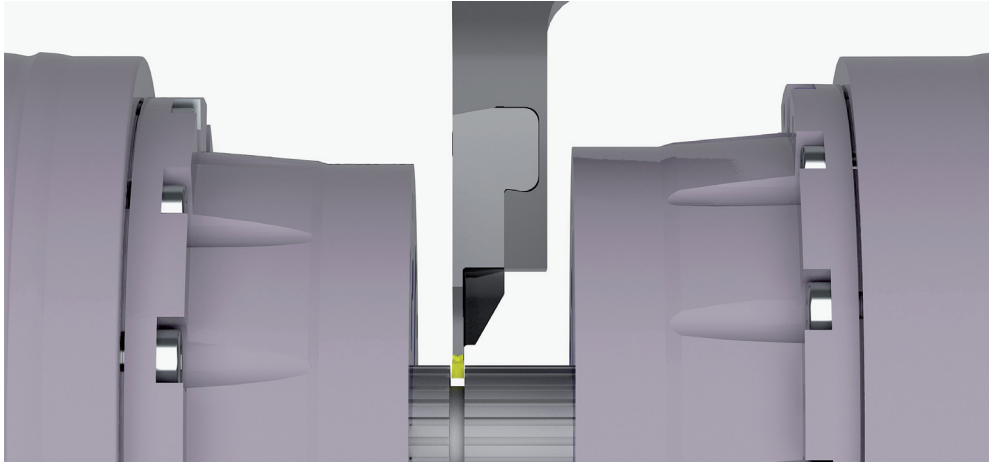


Beispiel: Doppelstecher
Example: double cutting

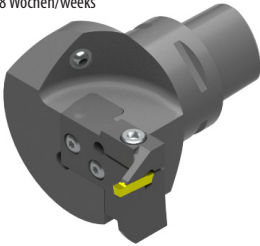
🕒 6 Wochen/weeks



Beispiel: Formbohrstange
Example: boring bar with profiling inserts

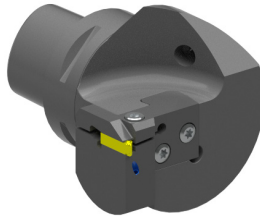


🕒 8 Wochen/weeks



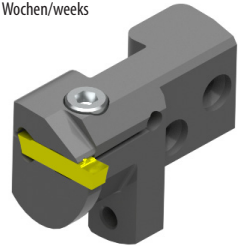
Beispiel: 90 Grad
Example: 90 degrees

🕒 6 Wochen/weeks



Beispiel: STV Freistich kurz
Example: STV short clearance cut

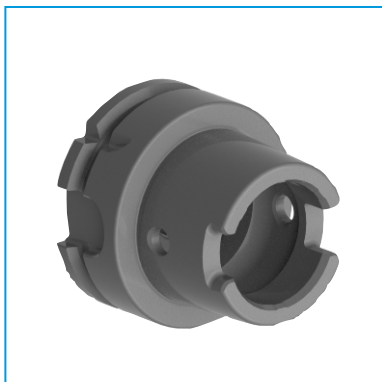
🕒 6 Wochen/weeks



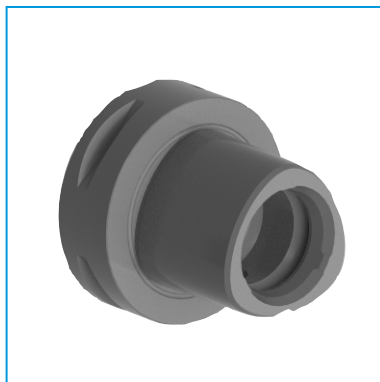
Beispiel: Innenadapter
Example: internal adapter

PSC/HSK

Stabile Monoblockaufnahmen Stable monoblock holder

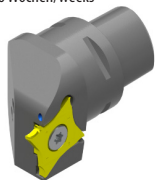


HSKT(A)63



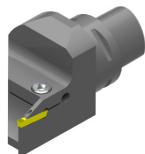
PSC32 PSC50 PSC80
PSC40 PSC63

🕒 6 Wochen/weeks



Beispiel: PSC32 mit Multicut
4 Schneidkörper
Example: PSC32
with Multicut 4 insert

🕒 6 Wochen/weeks



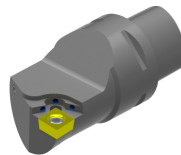
Beispiel: PSC 40 mit P92
Schneidkörper
Example: PSC40
with P92 insert

🕒 8 Wochen/weeks



Beispiel: HSK63 mit GLM Ein-
satz und P92 Schneidkörper
Example: HSK63 with GLM
cartridge and P92 insert

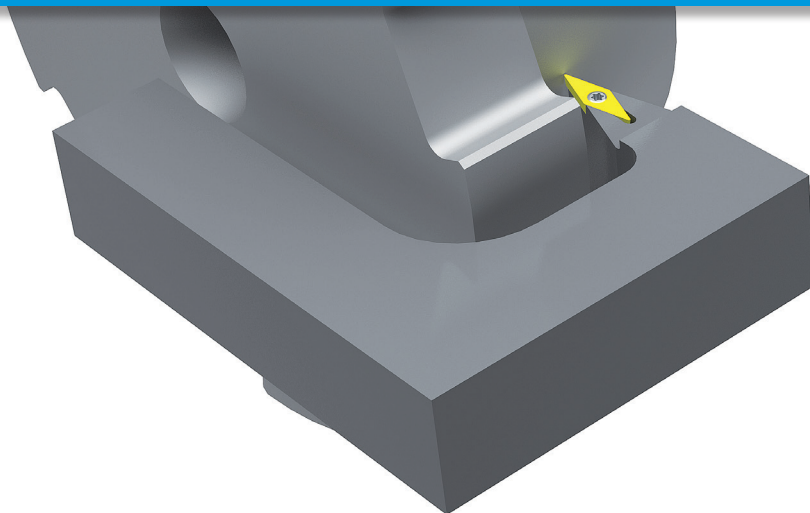
🕒 6 Wochen/weeks



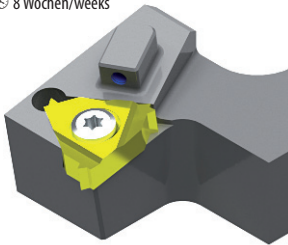
Beispiel: PSC mit ISO
Schneidkörper
Example: PSC with ISO insert

ISO-Special

Vorteilhaftes Design mit ISO-genormten Platten auf Sonderaufnahmen.
Attractive price-performance ratio connecting ISO inserts with special tool holder.

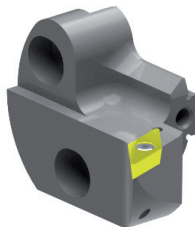


🕒 8 Wochen/weeks



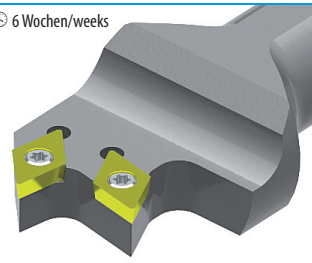
Beispiel: ISO Gewinde
Example: ISO thread

🕒 6 Wochen/weeks



Beispiel: ISO Platte auf Sonderkassette
Example: ISO insert on special cartridge

🕒 6 Wochen/weeks



Beispiel: ISO Platten auf Sonderbohrstangen
Example: ISO inserts on special boring bars



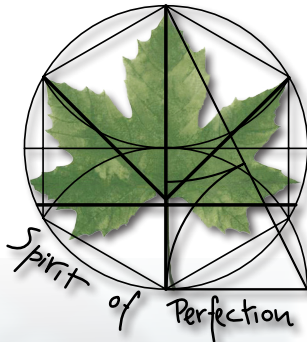
ZIBTRPRO

tehnologija obdelave · vpenjalni sistemi

- Individuell
- Wirtschaftlich
- Schnell
- Nachhaltig

... einfach perfekt!

Informationen über Standard-Produkte finden Sie in unserem GripLock Katalog und der Neuheiten bzw. Programmerweiterungs Broschüre. Gerne können Sie diese bei uns kostenfrei anfordern.



Solutions by Kemmer

- Individual
- Profitable
- Fast
- Reliable

... simply perfect!

Information about standard products can be found in our GripLock catalog and in the new products/program extension brochure. Please don't hesitate to order them for free.



KEMMER

HARTMETALLWERKZEUGE GmbH

eMail: info@kemmerHMW.de

www.KemmerHMW.de

MKT009 - Sonderwerkzeuge | special tooling

Vertrieb & Verwaltung

Sales & Administration

Im Tale 11 · D-72218 Wildberg

Telefon: +49 (0) 70 54/92 91-0

Fax: +49 (0) 70 54/92 91-26

Produktion & Entwicklung

Production & Development

Gewerbestr. 11 · D-98544 Zella-Mehlis

Telefon +49 (0) 36 82/89 55-0

Fax: +49 (0) 36 82/89 55-55