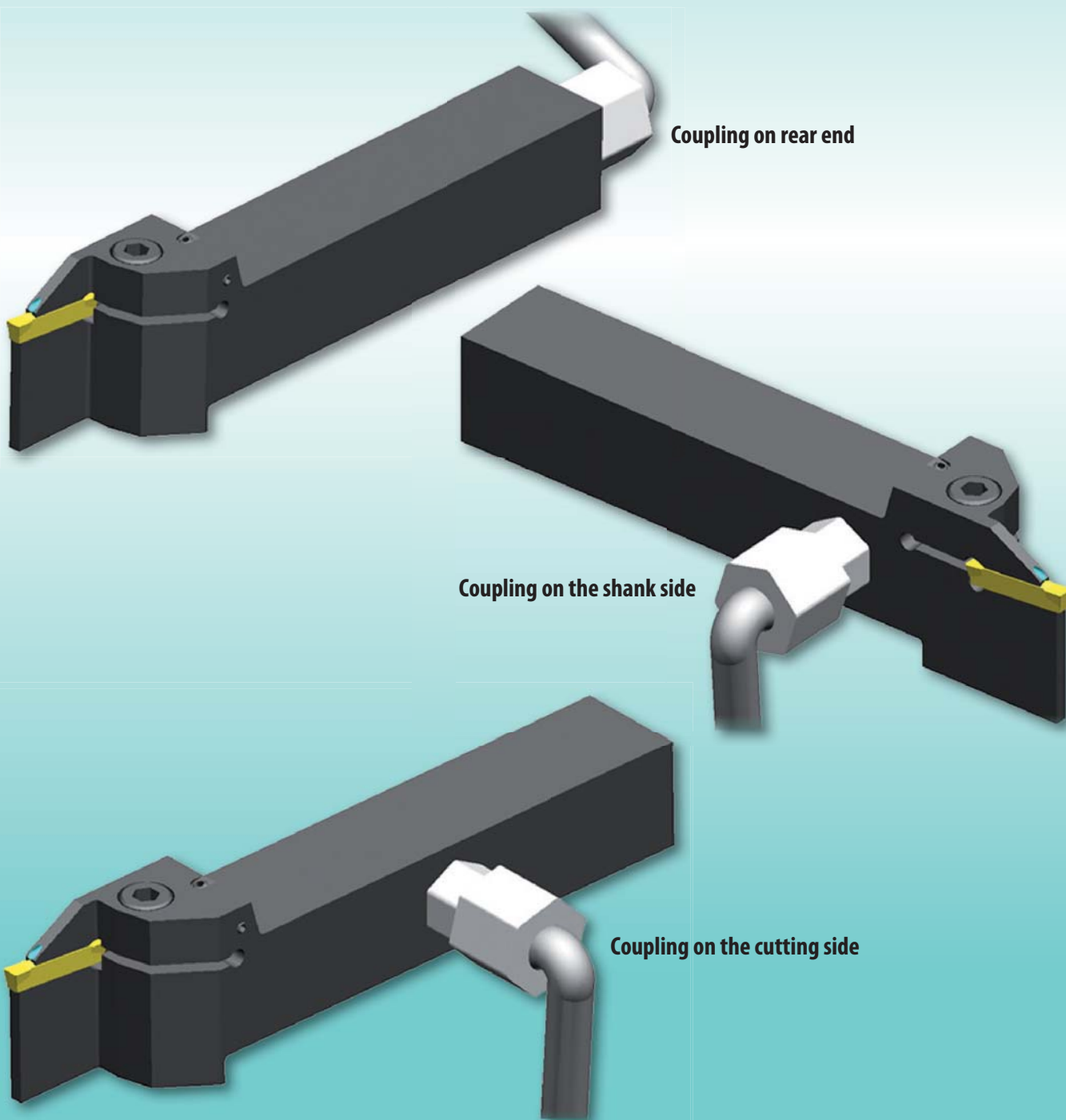


# Hi pressure cooling system

new

- ▶ *Prevents heat development*
- ▶ *Easy chip flow*
- ▶ *Increases tool life*

Hi pressure cooling system  
Tailor made



# Dimension sheet do define coolant coupling positions

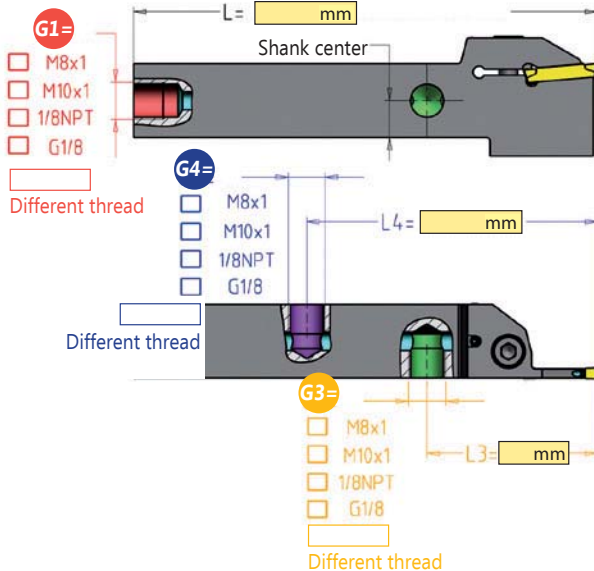
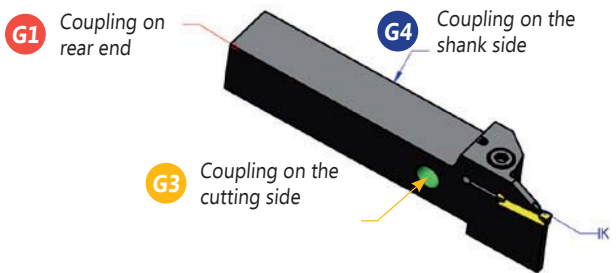
## Thread options

$L \pm 1$   
 $L3 \pm 1$   
 $L4 \pm 1$   
 G1  
 G3  
 G4

} Variable dimensions defined by customer

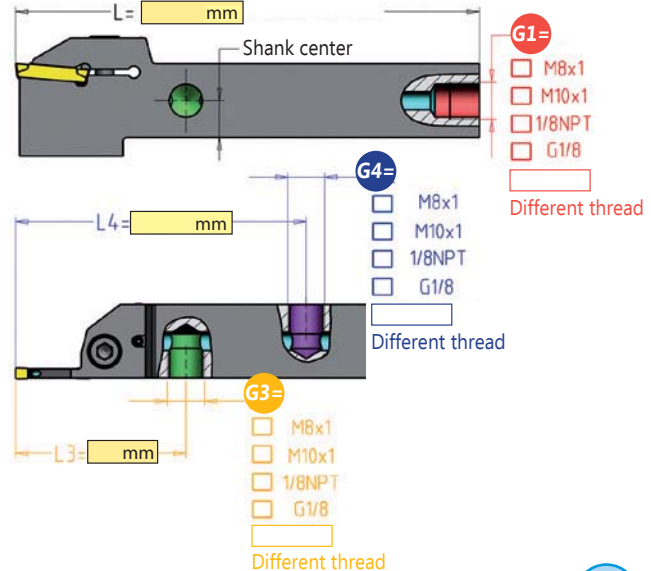
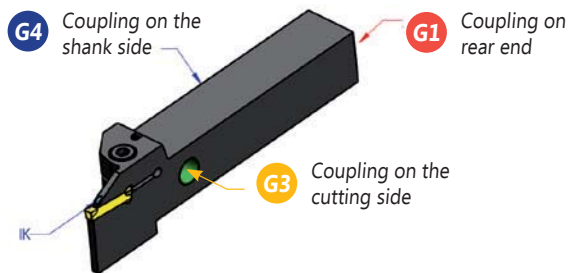
Left hand holder

Description tool holder from page 183 and 184



Description tool holder from page 183 and 184

Right hand holder



### Filling in recommendation

- Enter the required holder from pages 183 and 184 please
- Enter the required dimensions in the square fields. For instance: L4 = 96 mm
- Cross the required thread please. For instance:  M8x1

In case the coupling requested is on the side of the holder and the rear thread G1 is not required, we put in the same thread as requested for the side coupling. The rear end will be closed with a threaded plug.

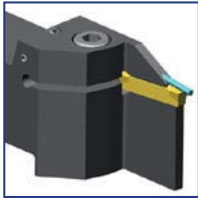
**List price for 1pc modified tool holder from pages 183 and 184 according to your dimensions = 189 €**

**The modification covers 1 side coupling and 1 rear coupling with the same thread.**

You will find more data sheets on page 221 or download it at [www.kemmerhmv.de](http://www.kemmerhmv.de)

Finished and semi-finished holders system P92

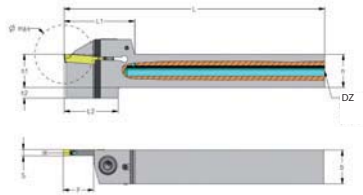
Hi Pressure Cooling System  
Tailor made



P92 CXCBP

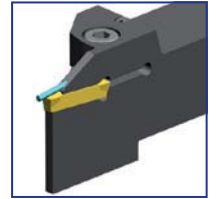
LH

Without thread to be entered on dimension sheet page 182



P92 CXCBP

RH



WG3800 Ref.	Without thread	M8x1	M10x1	G1/8	N1/8 NPT	DZ	( )	Ø max	h	h1	h2	b	P	S	L	L1	L2	
	ID-Nr.	ID-Nr.	ID-Nr.	ID-Nr.	ID-Nr.													
P92 CXCBP 1212 K30 14HP	48798	48799				4,0	L	28	12	12	5	12	14	3,0	125	30	26	11
P92 CXCBP 1616 K30 14HP	48800	48801	48802	48803	48804	5,0	L	28	16	16	5	16	14	3,0	125	34	26	1
P92 CXCBP 1616 K30 17HP	48805	48806	48807	48808	48809	5,0	L	34	16	16	5	16	17	3,0	125	37	29	1
P92 CXCBP 2020 K30 17HP	48810	48811	48812	48813	48814	5,0	L	34	20	20	5	20	17	3,0	125	37	29	1
P92 CXCBP 2525 M30 17HP	48815	48816	48817	48818	48819	5,0	L	34	25	25	-	25	17	3,0	150	37	-	2
P92 CXCBP 1212 K30 14HP	48820	48821				4,0	R	28	12	12	5	12	14	3,0	125	34	26	11
P92 CXCBP 1616 K30 14HP	48822	48823	48824	48825	48826	5,0	R	28	16	16	5	16	14	3,0	125	34	26	1
P92 CXCBP 1616 K30 17HP	48827	48828	48829	48830	48831	5,0	R	34	16	16	5	16	17	3,0	125	37	29	1
P92 CXCBP 2020 K30 17HP	48832	48833	48834	48835	48836	5,0	R	34	20	20	5	20	17	3,0	125	37	29	1
P92 CXCBP 2525 M30 17HP	48837	48750	48751	48752	48753	5,0	R	34	25	25	-	25	17	3,0	150	37	-	2

WG3800 Ref.	Without thread	M8x1	M10x1	G1/8	N1/8 NPT	DZ	( )	Ø max	h	h1	h2	b	P	S	L	L1	L2	
	ID-Nr.	ID-Nr.	ID-Nr.	ID-Nr.	ID-Nr.													
P92 CXCBP 1212 K20+25 11HP	48794	48795				4,0	L	22	12	12	4	12	11	2+2,5	125	23	23	10
P92 CXCBP 1616 K20+25 11HP	48796	48797	48720	48721	48722	5,0	L	22	16	16	-	16	11	2+2,5	125	23	-	10
P92 CXCBP 1616 K20+25 17HP	48723	48724	48725	48726	48727	5,0	L	34	16	16	5	16	17	2+2,5	125	34	26	1
P92 CXCBP 2020 K20+25 17HP	48728	48729	48730	48731	48732	5,0	L	34	20	20	-	20	17	2+2,5	125	34	-	1
P92 CXCBP 1212 K20+25 11HP	48733	48734				4,0	R	22	12	12	4	12	11	2+2,5	125	19,5	19,5	10
P92 CXCBP 1616 K20+25 11HP	48735	48736	48737	48738	48739	5,0	R	22	16	16	-	16	11	2+2,5	125	19,5	-	10
P92 CXCBP 1616 K20+25 17HP	48740	48741	48742	48743	48744	5,0	R	34	16	16	5	16	17	2+2,5	125	34	26	1
P92 CXCBP 2020 K20+25 17HP	48745	48746	48747	48748	48749	5,0	R	34	20	20	-	20	17	2+2,5	125	34	-	1

WG3800 Ref.	Without thread	M8x1	M10x1	G1/8	N1/8 NPT	DZ	( )	Ø max	h	h1	h2	b	S	L	L1	L2	
	ID-Nr.	ID-Nr.	ID-Nr.	ID-Nr.	ID-Nr.												
P92 A CXCBP 2020 K30HP	48754	48755	48756	48757	48758	5,0	L	65	20	20	17	20	3,0	125	54	45	12
P92 A CXCBP 2020 K40HP	48759	48760	48761	48762	48763	5,0	L	65	20	20	17	20	4,0	125	54	45	12
P92 A CXCBP 2525 M30HP	48764	48765	48766	48767	48768	5,0	L	65	25	25	12	25	3,0	150	54	45	12
P92 A CXCBP 2525 M40HP	48769	48770	48771	48772	48773	5,0	L	65	25	25	12	25	4,0	150	54	45	12
P92 A CXCBP 2020 K30HP	48774	48775	48776	48777	48778	5,0	R	65	20	20	17	20	3,0	125	54	45	12
P92 A CXCBP 2020 K40HP	48779	48780	48781	48782	48783	5,0	R	65	20	20	17	20	4,0	125	54	45	12
P92 A CXCBP 2525 M30HP	48784	48785	48786	48787	48788	5,0	R	65	25	25	12	25	3,0	150	54	45	12
P92 A CXCBP 2525 M40HP	48789	48790	48791	48792	48793	5,0	R	65	25	25	12	25	4,0	150	54	45	12

Fitting inserts



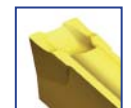
Torque  
p.205-206,216



p. 46-51

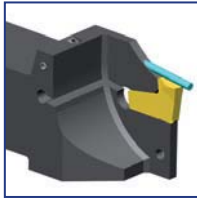


p. 52



p. 53-56

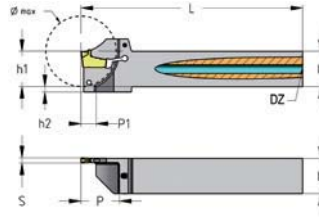
**Finished and semi-finished holders system Flex Fix** Hi Pressure Cooling System Tailor made



F16L HP

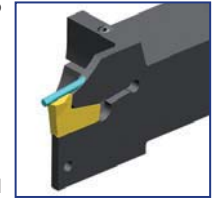
LH

Without thread to be entered on dimension sheet page 182



F16R HP

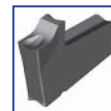
RH



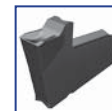
WG3205 Ref.	Without thread	M8x1	M10x1	G1/8	N1/8 NPT	DZ	(C)	Ø max	h	h1	h2	b	S	L	L1	L2	
	ID-Nr.	ID-Nr.	ID-Nr.	ID-Nr.	ID-Nr.												
F16 L 2020 X30 65HP	48690	48691	48692	48693	48694	5,0	L	65	20	20	17	20	3,0	115	54	45	AWF16
F16 L 2525 X30 65HP	48695	48696	48697	48698	48699	5,0	L	65	25	25	12	25	3,0	140	54	45	AWF16
F16 R 2020 X30 65HP	48680	48681	48682	48683	48684	5,0	R	65	20	20	17	20	3,0	115	54	45	AWF16
F16 R 2525 X30 65HP	48685	48686	48687	48688	48689	5,0	R	65	25	25	12	25	3,0	140	54	45	AWF16

WG3205 Ref.	Without thread	M8x1	M10x1	G1/8	N1/8 NPT	DZ	(C)	Ø max	h	h1	h2	b	P1	S	L	L1	L2	
	ID-Nr.	ID-Nr.	ID-Nr.	ID-Nr.	ID-Nr.													
F16 L 2020 K30 42HP	48710	48711	48712	48713	48714	5,0	L	42	20	20	3	20	8	3,0	125	28,5	25	AWF16
F16 L 2525 M30 42HP	48715	48716	48717	48718	48719	5,0	L	42	25	25	0	25	8	3,0	150	28,5	25	AWF16
F16 R 2020 K30 42HP	48700	48701	48702	48703	48704	5,0	R	42	20	20	3	20	8	3,0	125	28,5	25	AWF16
F16 R 2525 M30 42HP	48705	48706	48707	48708	48709	5,0	R	42	25	25	0	25	8	3,0	150	28,5	25	AWF16

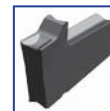
Fitting inserts



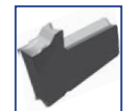
p. 120



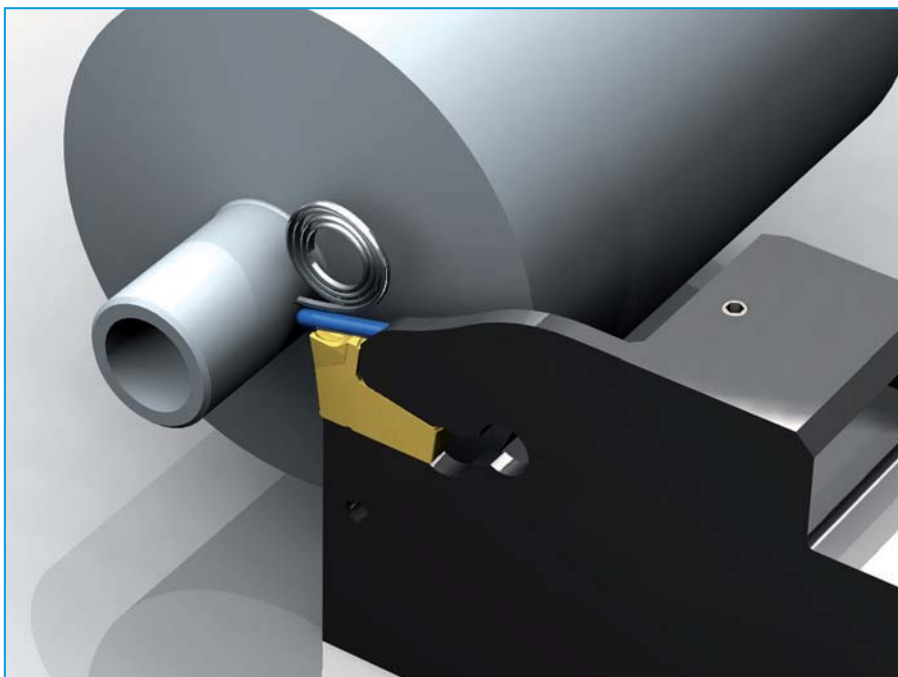
p. 121



p. 122



p. 122



**KEEP COOL!**

Coolant jet hits the hot spot.

- Preventing heat
- Reducing wear
- Easy chip flow
- Increasing tool life