

Precision meets Motion

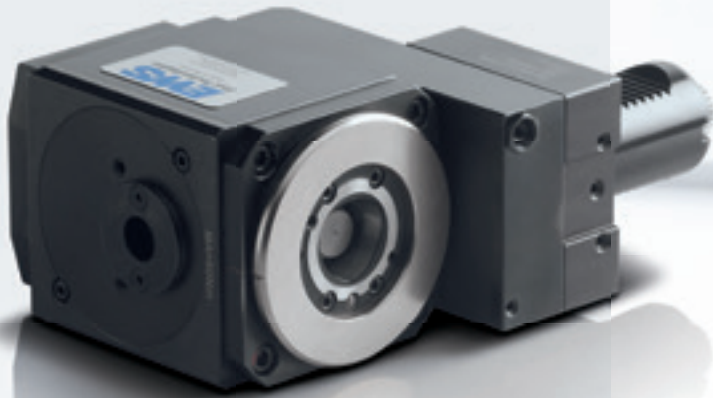


EWS.CAPTO™

Einsätze ohne Greiferrille

Inserts without a gripper groove

EWS
Tool Technologies



EWS . CAPTO™

Einsätze ohne Greiferrille
Inserts without a gripper groove

Vorteile

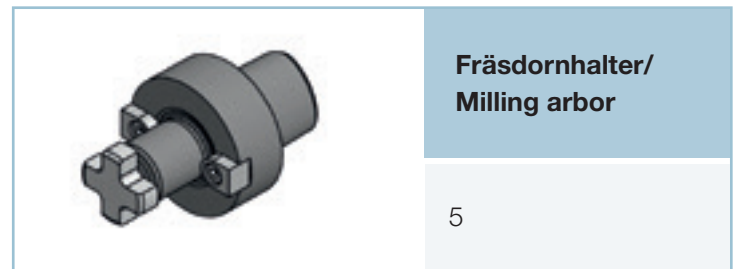
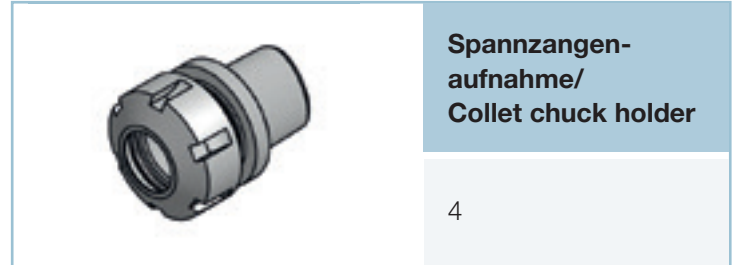
- Weitere Schneidwerkzeuglängen verfügbar
Kurze Werkzeughalterauskrägung ohne Greiferrille
- Höhere Präzision
Geringere Rundlauffehler durch verkürzte Auskrägung
- Größere Stabilität
Weniger Vibrationen durch verkürzte Werkzeugauskrägung
- Längere Lebenszeit
Geringere Belastung auf die Lager durch weniger Drehbeanspruchung

Advantages

- More available cutting tool length
Short toolholder projection with no gripper groove
- Higher accuracy
Smaller run-out error through reduced projection length
- Higher stability
Lower vibrations through reduced tool projection length
- Longer lifetime
Lower load on the bearings through shorter torsion



Inhaltsverzeichnis
Content



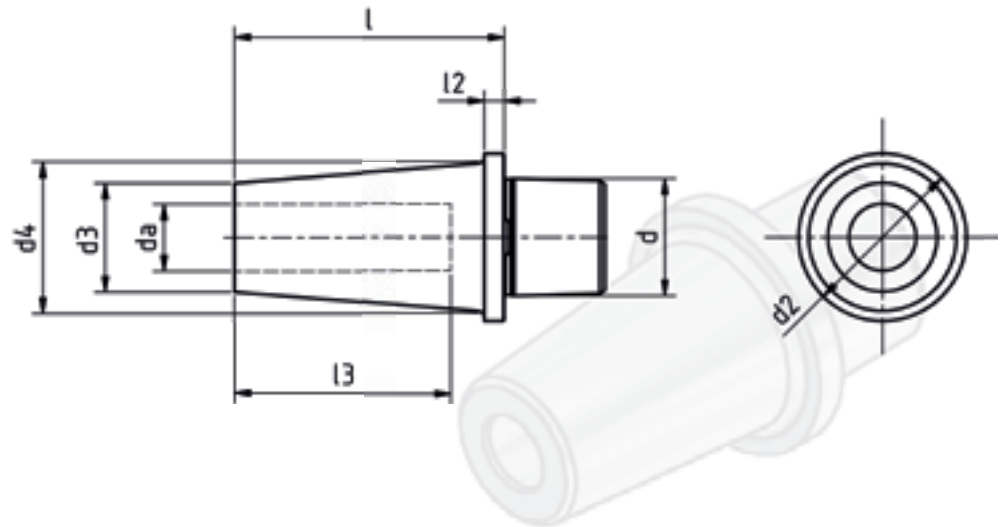
Weitere Varianten auf Anfrage



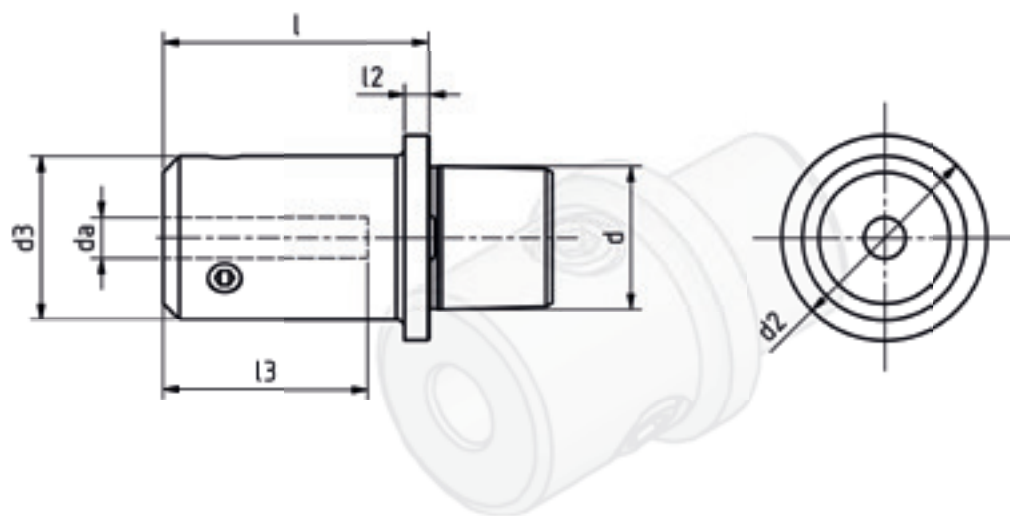
Schrumpffutter
Shrink chuck


Nr. / No.

27.C...L...SHR

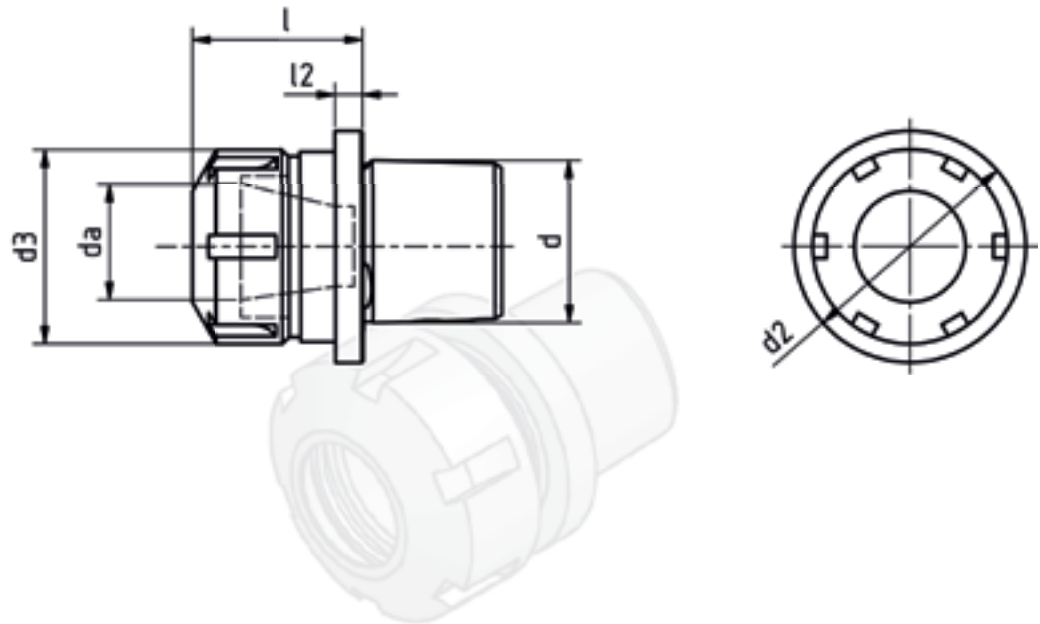


Nr. / No.	d	d _a	d ₂	d ₃	d ₄	l	l ₂	l ₃
27.C3C06L48SHR	C3	Ø 6	Ø 32	Ø 21	Ø 27,9	48	4	36
27.C3C08L48SHR	C3	Ø 8	Ø 32	Ø 21	Ø 27,9	48	4	36
27.C3C10L48SHR	C3	Ø 10	Ø 32	Ø 24	Ø 30,9	48	4	41
27.C3C12L48SHR	C3	Ø 12	Ø 32	Ø 24	Ø 30,9	48	4	46
27.C4C06L49SHR	C4	Ø 6	Ø 40	Ø 21	Ø 27,9	49	5	36
27.C4C08L49SHR	C4	Ø 8	Ø 40	Ø 21	Ø 27,9	49	5	36
27.C4C10L49SHR	C4	Ø 10	Ø 40	Ø 24	Ø 30,9	49	5	41
27.C4C12L49SHR	C4	Ø 12	Ø 40	Ø 24	Ø 30,9	49	5	46
27.C4C12.7L49SHR	C4	Ø 12,7	Ø 40	Ø 24	Ø 30,9	49	5	46
27.C4C14L49SHR	C4	Ø 14	Ø 40	Ø 27	Ø 33,9	49	5	46
27.C4C15.88L54SHR	C4	Ø 15,88	Ø 40	Ø 27	Ø 34,7	54	5	49
27.C4C16L54SHR	C4	Ø 16	Ø 40	Ø 27	Ø 34,7	54	5	49
27.C4C19.05L54SHR	C4	Ø 19,05	Ø 40	Ø 33	-	54	9,5	49
27.C5C06L50SHR	C5	Ø 6	Ø 50	Ø 21	Ø 27,9	50	6	36
27.C5C08L50SHR	C5	Ø 8	Ø 50	Ø 21	Ø 27,9	50	6	36
27.C5C10L50SHR	C5	Ø 10	Ø 50	Ø 24	Ø 30,9	50	6	41
27.C5C12L50SHR	C5	Ø 12	Ø 50	Ø 24	Ø 30,9	50	6	46
27.C5C12.7L50SHR	C5	Ø 12,7	Ø 50	Ø 24	Ø 30,9	50	6	46
27.C5C14L50SHR	C5	Ø 14	Ø 50	Ø 27	Ø 33,9	50	6	46
27.C5C15.88L55SHR	C5	Ø 15,88	Ø 50	Ø 27	Ø 34,7	55	6	49
27.C5C16L55SHR	C5	Ø 16	Ø 50	Ø 27	Ø 34,7	55	6	49
27.C5C19.05L55SHR	C5	Ø 19,05	Ø 50	Ø 33	Ø 40,7	55	6	49

Vollbohrerhalter
U-drill holder

Nr. / No.

27.C...WNL...

Nr. / No.	d	d _a	d ₂	d ₃	l	l ₂	l ₃
27.C3C06WNL33	C3	Ø 6	Ø 32	Ø 19	33	6	37
27.C3C08WNL33	C3	Ø 8	Ø 32	Ø 21	33	6	37
27.C3C10WNL37	C3	Ø 10	Ø 32	Ø 28	37	6	41
27.C3C12WNL42	C3	Ø 12	Ø 32	Ø 34	42	6	46
27.C3C14WNL43	C3	Ø 14	Ø 32	Ø 36	43	6	46
27.C3C16WNL51	C3	Ø 16	Ø 32	Ø 38	51	6	49
27.C4C06WNL30	C4	Ø 6	Ø 40	Ø 19	30	6	37
27.C4C08WNL30	C4	Ø 8	Ø 40	Ø 21	30	6	37
27.C4C10WNL34	C4	Ø 10	Ø 40	Ø 28	34	6	41
27.C4C12WNL39	C4	Ø 12	Ø 40	Ø 34	39	6	46
27.C4C12.7WNL39	C4	Ø 12,7	Ø 40	Ø 34	39	6	46
27.C4C15.88WNL43	C4	Ø 15,88	Ø 40	Ø 38	43	6	49
27.C4C16WNL43	C4	Ø 16	Ø 40	Ø 38	43	6	49
27.C4C19.05WNL45	C4	Ø 19.05	Ø 40	Ø 45	45	6	51
27.C4C20WNL45	C4	Ø 20	Ø 40	Ø 45	45	6	51
27.C5C06WNL29	C5	Ø 6	Ø 50	Ø 19	29	6	37
27.C5C08WNL29	C5	Ø 8	Ø 50	Ø 21	29	6	37
27.C5C10WNL33	C5	Ø 10	Ø 50	Ø 28	33	6	41
27.C5C12WNL38	C5	Ø 12	Ø 50	Ø 34	38	6	46
27.C5C12.7WNL38	C5	Ø 12,7	Ø 50	Ø 34	38	6	46
27.C5C15.88WNL41	C5	Ø 15,88	Ø 50	Ø 38	41	6	49
27.C5C16WNL41	C5	Ø 16	Ø 50	Ø 38	41	6	49
27.C5C19.05WNL44	C5	Ø 19.05	Ø 50	Ø 45	44	6	51
27.C5C20WNL44	C5	Ø 20	Ø 50	Ø 45	44	6	51
27.C5C25WNL50	C5	Ø 25	Ø 50	Ø 51	50	6	57

Spannzangenaufnahme
Collet chuck holder

Nr. / No.

31.C...L...

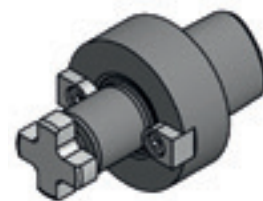
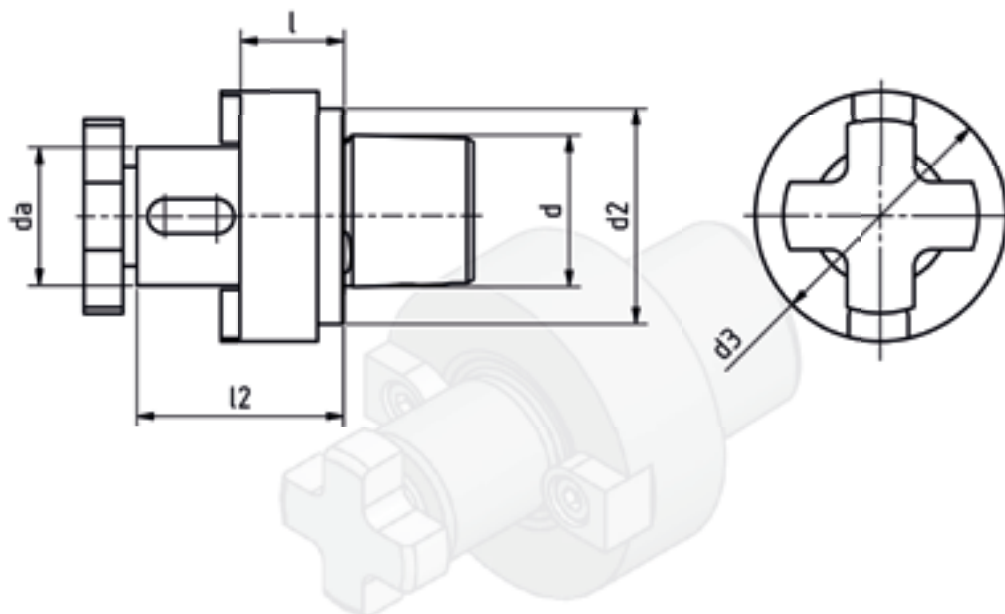
Spannzange / Collet

 ER16 (1-10)
 ER20 (1-13)
 ER25 (1-16)
 ER32 (2-20)
 ER40 (3-26)

**Gewindebohrzange /
tapping collet**

 ET-1-16 M1-M6
 ET-1-20 M2-M6
 ET-1-25 M3-M12
 ET-1-32 M5-M12
 ET-1-40 M6-M16

Nr. / No.	d	d _a	d ₂	d ₃	l	l ₂
31.C3C16L29.5	C3	Ø 16	Ø 32	Ø 28	min. 28 max. 31,6	6
31.C3C20L32	C3	Ø 20	Ø 32	Ø 34	min. 30 max. 33,5	6
31.C3C25L44	C3	Ø 25	Ø 32	Ø 42	min. 42,5 max. 46	15,5
31.C4C20L32	C4	Ø 20	Ø 40	Ø 34	min. 30 max. 33,5	6
31.C4C25L32	C4	Ø 25	Ø 40	Ø 42	min. 30,5 max. 34	6
31.C5C25L34	C5	Ø 25	Ø 50	Ø 42	min. 32,5 max. 36	6
31.C5C32L38	C5	Ø 32	Ø 50	Ø 50	min. 35,5 max. 39	6
31.C5C40L58	C5	Ø 40	Ø 50	Ø 63	min. 54,5 max. 58	22

Fräsdornhalter
 Milling arbor

Nr. / No.

42.C3C...L...

Nr. / No.	d	d_a	d_2	d_3	l	l_2
42.C3C16L15	C3	Ø 16	Ø 32	Ø 37	15	32
42.C3C22L19	C3	Ø 22	Ø 32	Ø 47	19	38
42.C4C16L10	C4	Ø 16	Ø 40	Ø 40	10	27
42.C4C22L12	C4	Ø 22	Ø 40	Ø 45	12	31
42.C4C27L14	C4	Ø 27	Ø 40	Ø 50	14	35
42.C5C22L12	C5	Ø 22	Ø 50	Ø 50	12	31
42.C5C27L12	C5	Ø 27	Ø 50	Ø 50	12	33
42.C5C32L18	C5	Ø 32	Ø 50	Ø 63	18	42



EWS
Tool Technologies

EWS Weigele GmbH & Co. KG

Maybachstraße 1 · D-73066 Uhingen
Telefon +49(0)7161-93040-100
Telefax +49(0)7161-93040-30
E-Mail: info@ews-tools.de
www.ews-tools.de

WSW Spannwerkzeuge-Vertriebs GmbH

Maybachstr. 1 · D-73066 Uhingen
Telefon +49(0)7161-93040-100
Telefax +49(0)7161-93040-30
E-Mail: info@wsw-collets.de
www.wsw-collets.de

Command Tooling Systems

13931 Sunfish Lake Blvd NW
Ramsey · MN 55303 USA
Telefon +1-763-576-6910
Telefax +1-763-576-6911
support@commandtool.com
www.commandtool.com

EWS Korea Co. Ltd.

60-11 · Woongnam-Dong
Changwon
Kyoung-Nam Korea
Telefon +82 55-267-8085
Telefax +82 55-262-3118
E-Mail: info@ewskorea.co.kr
www.ewskorea.co.kr

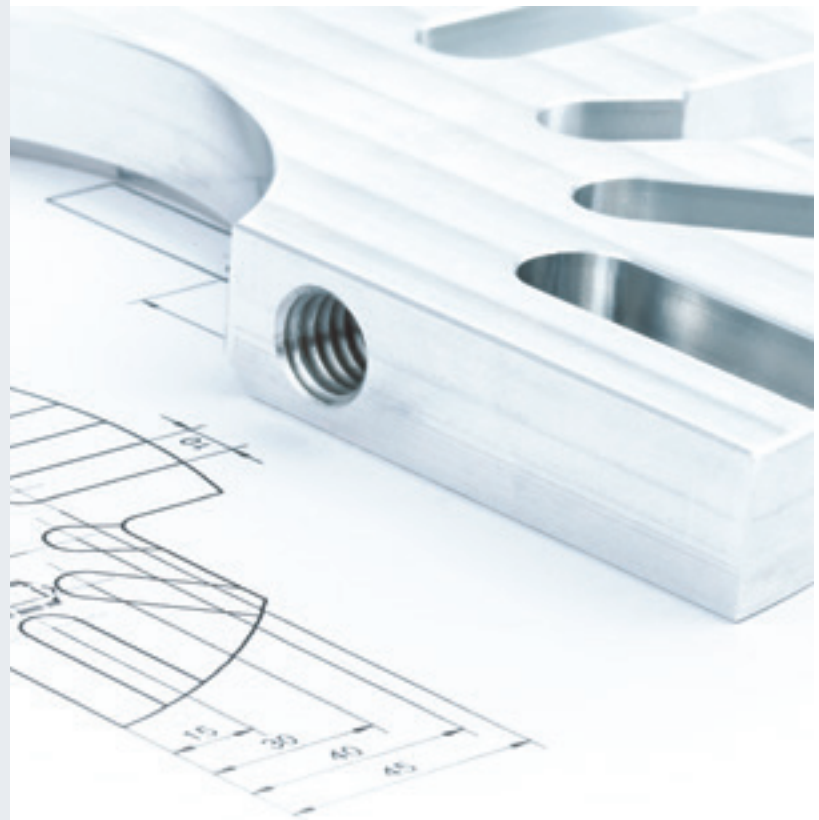
EWS Ltd.

Krassnaja str., 38
600015 Vladimir
Russland
Telefon +7-4922-541160
Telefax +7-4922-541160
E-Mail: info@ews-rusland.ru
www.ews-rusland.ru

**EWS Tool Holder Technologies
(Taicang) Co. Ltd**

Beijing East Road No. 88
215400 Taicang · Jiangsu
P. R. China
Telefon +86 512 3306 2600
Telefax +86 512 3306 2601
E-Mail: sales.cnews-tools.de
www.ews-tools.cn

Stand / updated: 03/2016



ZIBTRPRO
tehnologija obdelave · vpenjalni sistemi