



- Pneumatic Grippers
- Mechatronic Grippers
- Quick Change Systems Gripper
- Inductive Coupling Systems
- Accessories



AUTOMATION

Company

SMW-AUTOBLOK Spannsysteme GmbH



 <p>>1.000 GLOBAL WORKFORCE</p>	<p>MECHANICAL & MECHATRONIC</p>  <p>WORKHOLDING SYSTEMS FOR WORKPIECE CLAMPING</p>	
 <p>17 SUBSIDIARIES</p>	 <p>>10.000 STANDARD PRODUCTS</p>	 <p>>320 EMPLOYEES IN MECKENBEUREN</p>
 <p>>200 PRODUCT LINES</p>	<p>PRESENT IN</p>  <p>>60 COUNTRIES</p>	 <p>2 CORPORATE HEADQUARTERS MECKENBEUREN & TURIN</p>

¹ Plant Meckenbeuren
R+D, manufacturing,
sales, service, support

² Technical- and
logistics center
Meckenbeuren

³ Meckenbeuren
R+D, manufacturing, test

SMW-electronics GmbH



<p>20 EMPLOYEES</p> 	<p>LEADING SUPPLIER FOR</p>  <p>INDUCTIVE COUPLING SYSTEMS</p>
<p>PRODUCTS FOR DIGITIZATION AND AUTOMATION OF PROCESSES</p> 	
<p>MECHATRONIC PRODUCTS/ AUTOMATION</p> 	 <p>GRIPPER / EOAT</p>
<p>SENSORS SYSTEMS</p> 	 <p>HEAD OFFICE MECKENBEUREN</p>

Transformation into a High-tech process provider

Mechatronic	Electronic	Software
 <ul style="list-style-type: none"> • Workholding for workpiece clamping • Rotating and stationary • Automation products End of Arm Tools (EOAT) 	 <ul style="list-style-type: none"> • Mechatronic drives • Inductive non-contact energy and signal transmission • Intelligent sensors • Communication interfaces 	 <ul style="list-style-type: none"> • Programming • Drive/Controller/Fieldbus • Electronic devices • PLC integration modules • Safety modules
 <div data-bbox="526 1937 1061 2042" style="background-color: #003366; color: white; padding: 10px; border-radius: 15px; display: inline-block;"> <h3>High-tech Process Supplier</h3> </div>		

Product overview

Pneumatic Grippers

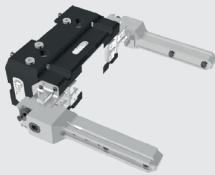
PX / PL
Universal gripper¹



3MN
Centric gripper²



PP
Pallet gripper³



Mechatronic Grippers

MX-S
Small parts gripper⁴



MX-M
Universal gripper⁵



MX-L
Long stroke gripper⁶



Robot Accessories

PRS
Robot quick change systems⁷



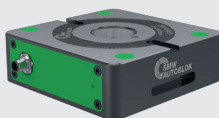
- ¹ PX/PL, Universal gripper, 2 fingers parallel, 64 / 80 / 100 / 125 / 160 / 200 / 250 / 320 / 380
- ² 3PX, Centric gripper, 3 fingers parallel, 64 / 80 / 100 / 125 / 160 / 200 / 250 / 320 / 380
- ³ PP, Pallet gripper, also hydraulic actuation, 125 / 160 / 200 / 250
- ⁴ MX-S, Small parts gripper, 2 fingers parallel, 25 / 40 / 50 / 64, IO-Link
- ⁵ MX-M, Universal gripper, 2 fingers parallel, 80 / 125, IO-Link
- ⁶ MX-L, Long stroke gripper, 2 fingers parallel, 320 / 520, Profinet
- ⁷ Gripper change systems, PRS 55 / 85 / 110 / 160 / 240

Zero-Point Systems

APS
Pneumatic



ZeroAct e-motion
Mechatronic



Transmission Systems

F100 ETH/-2IO/ F180 ETH
Inductive coupling systems for energy and signals



M30-IO/ C40 AUTOMATION
Inductive coupling systems for energy and signals



Accessories Automation

SLX digit
Hydraulic



SLX e-motion
Mechatronic



Pneumatic Grippers



Benefits

- Proofline: IP 64 protection, sealed and low-maintenance as standard
- Highest power density:
 - High gripping force
 - Compact design
 - Light weight
- Gripping force maintenance via spring pack or pressure maintenance optional
- Extensive sensor accessory package:
 - Magnetic switch in C-slot
 - Inductive proximity switches on fixed stop
 - Gripping position measuring
- Gripper-finger screw-on pattern optionally by means of centering sleeves or groove
- Sizes PL-L 320 and 380 with gripper finger quick-change system RR
- Versions gripper completely in steel and hydraulic drive available on request
- Compatible with standard universal gripper

PX / PL

Universal gripper, 2 fingers parallel

TYPE	ID-No.	Stroke/Jaw	Total gripping force at 6 bar	Total gripping force spring (3/4 Stroke)	Recommended workpiece weight	Piston area	Operating pressure Min/Max	Weight
PXS-L 64	on request	6 mm	300 N	---	1,5 kg	6,3 cm ²	3/8 bar	0,3 kg
PXS-L 80	on request	8 mm	428 N	---	2,0 kg	9 cm ²	3/8 bar	0,55 kg
PXS-L 100	on request	10 mm	675 N	---	3,5 kg	14,1 cm ²	3/8 bar	0,9 kg
PXM-N 125	77901864	6 mm	2800 N	---	14 kg	26 cm ²	3/8 bar	1,7 kg
PXM-L 125	77901964	13 mm	1320 N	---	6,5 kg	26 cm ²	3/8 bar	1,7 kg
PXM-LSE 125	77902164	13 mm	1840 N	520 N	9,2 kg	26 cm ²	3/8 bar	2,1 kg
PXM-LSI 125	77901264	13 mm	1920 N	520 N	9,5 kg	27,5 cm ²	3/8 bar	2,1 kg
PXM-N 160	77901868	8 mm	4500 N	---	22,5 kg	42 cm ²	3/8 bar	2,9 kg
PXM-L 160	77901968	16 mm	2150 N	---	11,0 kg	42 cm ²	3/8 bar	2,9 kg
PXM-LSE 160	77902168	16 mm	3050 N	900 N	15,0 kg	42 cm ²	3/8 bar	3,6 kg
PXM-LSI 160	77901268	16 mm	3210 N	900 N	16,0 kg	45 cm ²	3/8 bar	3,6 kg
PXM-N 200	77901872	14 mm	5600 N	---	28,0 kg	77 cm ²	3/8 bar	6,1 kg
PXM-L 200	77901972	25 mm	3700 N	---	18,5 kg	77 cm ²	3/8 bar	6,1 kg
PXM-LSE 200	77902172	25 mm	5000 N	1300 N	25,0 kg	77 cm ²	3/8 bar	7,6 kg
PXM-LSI 200	77901272	25 mm	5250 N	1300 N	26,0 kg	82 cm ²	3/8 bar	7,6 kg
PXL-N 250	77901877	17 mm	7700 N	---	38,5 kg	106 cm ²	3/8 bar	8,8 kg
PXL-L 250	77901977	30 mm	5100 N	---	25,5 kg	106 cm ²	3/8 bar	8,8 kg
PXL-LSE 250	77902177	30 mm	7100 N	2000 N	35,5 kg	106 cm ²	3/8 bar	12,0 kg
PXL-LSI 250	77901277	30 mm	7280 N	2000 N	36,5 kg	110 cm ²	3/8 bar	12,0 kg

PL

Universal gripper, 2 fingers parallel with RR quick change gripper finger

TYPE	ID-No.	Stroke/Jaw	Total gripping force at 6 bar	Total gripping force spring (1/2 Stroke)	Recommended workpiece weight	Piston area	Operating pressure Min/Max	Weight
PL-L-RR 320	77902683	45 mm	6000 N	---	30,0 kg	153 cm ²	3/8 bar	27,8 kg
PL-N-RR 320	77902583	23,5 mm	10950 N	---	55,0 kg	153 cm ²	3/8 bar	27,4 kg
PLS-L-RR 320	77902883	45 mm	7800 N	1800 N	40,0 kg	153 cm ²	3/8 bar	28,4 kg
PLS-N-RR 320	77902783	23,5 mm	14250 N	3300 N	71,0 kg	153 cm ²	3/8 bar	28 kg
PL-L-RR 380	77902689	50 mm	9225 N	---	46,0 kg	235 cm ²	3/8 bar	42 kg
PL-N-RR 380	77902589	26 mm	16875 N	---	85,0 kg	235 cm ²	3/8 bar	42 kg
PLS-L-RR 380	77902889	50 mm	12125 N	2900 N	60,0 kg	235 cm ²	3/8 bar	43 kg
PLS-N-RR 380	77902789	26 mm	22175 N	5300 N	110,0 kg	235 cm ²	3/8 bar	43 kg

3MN

Centric gripper, 3 fingers parallel



TYPE	ID-No.	Stroke/Jaw	Total gripping force at 6 bar	Total gripping force spring (1/2 Stroke)	Recommended workpiece weight	Piston area	Operating pressure Min/Max	Weight
3MN-L 64	77920106	6 mm	600 N	---	0,8 kg	12,7 cm ²	3/8 bar	0,8 kg
3MNS-L 64	77920206	6 mm	685 N	85 N	0,8 kg	12,7 cm ²	3/8 bar	0,8 kg
3MN-L 80	77920108	8 mm	1050 N	---	1,3 kg	22 cm ²	3/8 bar	1,3 kg
3MNS-L 80	77920208	8 mm	1250 N	200 N	1,3 kg	22 cm ²	3/8 bar	1,3 kg
3MN-L 100	77920110	10 mm	1800 N	---	2 kg	38 cm ²	3/8 bar	2 kg
3MNS-L 100	77920210	10 mm	2250 N	450 N	2 kg	38 cm ²	3/8 bar	2 kg
3MN-L 125	77920112	13 mm	3000 N	---	3,8 kg	63 cm ²	3/8 bar	3,8 kg
3MN-N 125	77920412	6 mm	6000 N	---	3,8 kg	63 cm ²	3/8 bar	3,8 kg
3MN-L 160	77920116	16 mm	6075 N	---	6 kg	128 cm ²	3/8 bar	6 kg
3MN-N 160	77920416	8 mm	9975 N	---	6 kg	128 cm ²	3/8 bar	6 kg
3MNS-L 160	77920216	16 mm	8175 N	2100 N	6 kg	128 cm ²	3/8 bar	6 kg
3MNS-N 160	77920516	8 mm	13375 N	3400 N	6 kg	128 cm ²	3/8 bar	6 kg
3MN-L 200	77920120	25 mm	7200 N	---	12 kg	185 cm ²	3/8 bar	12 kg
3MN-N 200	77920420	14 mm	12750 N	---	12 kg	185 cm ²	3/8 bar	12 kg
3MNS-L 200	77920220	25 mm	10500 N	3300 N	12 kg	185 cm ²	3/8 bar	12 kg
3MNS-N 200	77920520	14 mm	18750 N	6000 N	12 kg	185 cm ²	3/8 bar	12 kg
3MN-L 250	77920125	30 mm	10350 N	---	17 kg	267 cm ²	3/8 bar	17 kg
3MN-N 250	77920425	17 mm	18450 N	---	17 kg	267 cm ²	3/8 bar	17 kg
3MNS-L 250	77920225	30 mm	14850 N	4500 N	17 kg	267 cm ²	3/8 bar	17 kg
3MNS-N 250	77920525	17 mm	26450 N	8000 N	17 kg	267 cm ²	3/8 bar	17 kg
3MN-L-RR 320	77920732	40 mm	15000 N	---	45 kg	382 cm ²	3/8 bar	45 kg
3MN-N-RR 320	77920932	20 mm	27375 N	---	44 kg	382 cm ²	3/8 bar	44 kg
3MNS-L-RR 320	77920832	40 mm	21000 N	6000 N	46 kg	382 cm ²	3/8 bar	46 kg
3MNS-N-RR 320	77921032	20 mm	38275 N	10900 N	45 kg	382 cm ²	3/8 bar	45 kg
3MN-L-RR 380	77920738	50 mm	24375 N	---	64 kg	627 cm ²	3/8 bar	64 kg
3MN-N-RR 380	77920938	26 mm	45000 N	---	64 kg	627 cm ²	3/8 bar	64 kg
3MNS-L-RR 380	77920838	50 mm	31875 N	7500 N	66 kg	627 cm ²	3/8 bar	66 kg
3MNS-N-RR 380	77921038	26 mm	58500 N	13500 N	66 kg	627 cm ²	3/8 bar	66 kg

S = gripping force retention (E = external clamping, I = internal clamping), L = long stroke, N = normal stroke, RR = quick-change gripper finger

Mechatronic Grippers

Product line MOTIACT

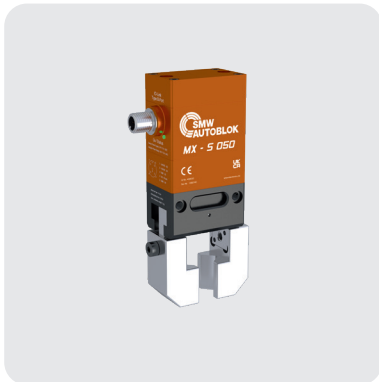


Benefits

- Gripping force independent of gripping speed and stroke
- Gripping force retention in case of power failure
- Measuring system (absolute sensor) to monitor the gripping position
- Safety features (self-locking; MX-L = additional features)
- Optional use of inductive coupling systems for 360° rotation. Contactless wear-free transmission of energy and signals
- Pre-positioning and sensitive gripping force adjustment
- IO-Link / Profinet interfaces with intelligent motion profiles
- IP64/ IP67 Protection class (MX-S = IP40)
- Optional: MX-S -> Speed-Version (coming soon)

MX-S

- Small parts gripper
- 2 finger parallel
- 25 / 40 / 50 / 64
- IO-Link



MX-S 050 Technical data

- L/W/H 50x35x90 mm
- Stroke per jaw = 8 mm
- Gripping force open/close 200 N
- IP40 Protection class
- Repeatability = 0,02 mm
- Gripping force retention due to self locking and spring assembly
- IO-Link Interface

MX-M

- Universal gripper
- 2 finger parallel
- 80 / 125
- IO-Link



MX-M 080 Technical data

- L/W/H 96x44x106 mm
- Stroke per jaw = 8 mm
- Gripping force open/close 1200 N
- IP64 Protection class
- Repeatability = 0,02 mm
- Gripping force retention due to self locking and spring assembly
- IO-Link Interface

MX-L

- Long stroke gripper
- 2 finger farallel
- 320 / 520
- Profinet



MX-L 520 Technical data

- L/W/H 520/180/138 mm
- Stroke per jaw = 99 mm
- Gripping force open/close 10-40 kN
- IP67 Protection class
- Repeatability = 0,02 mm
- Gripping force retention due to self locking and spring assembly and additional engine brake
- Profinet Interface

MX-S

Mechatronic small parts gripper - 2 fingers parallel

Application/customer benefits

- Gripping force independent of gripping speed and stroke
- Mechatronic drive with gripping force retention
- Position sensing and monitoring of the gripping force
- Pre-positioning and sensitive gripping force adjustment
- IP40 Protection class
- Suitable for use as small parts gripper due to lightweight and compact design
- Also suitable for cobot applications and pick & place tasks

Technical features

- External and internal clamping
- Repeatability 0,02 mm
- Recommended workpiece weight up to 1,5 kg
- Power supply 24V / 2A
- Communication interface IO-Link (I/O communication on request)

SMW-AUTOBLOK Type		MX-S 025	MX-S 040	MX-S 050	MX-S 064
Id-No.		Coming Soon	Coming Soon	480020	Coming Soon
Total gripping force	N	40	140	200	300
Stroke per jaw	mm	3	6	8	10
Repeatability	mm	0,02	0,02	0,02	0,02
Weight	kg	0,18	0,3	0,58	0,75
Recommended workpiece weight	kg	0,2	0,7	1	1,5
Voltage	V	24	24	24	24
Current	A	2	2	2	2
Protection class		IP40	IP40	IP40	IP40

MX-M

Mechatronic Universal gripper - 2 fingers parallel

Application/customer benefits

- Gripping force independent of gripping speed and stroke
- Mechatronic drive with gripping force retention
- Position sensing and monitoring of the gripping force
- Pre-positioning and sensitive gripping force adjustment
- IP64 Protection class
- Robust and compact design allows universal usage

Technical features

- External and internal clamping
- Repeatability 0,02 mm
- Recommended workpiece weight up to 9 kg
- Power supply 24V / 5A
- Communication interface IO-Link (I/O communication on request)

SMW-AUTOBLOK Type		MX-M 080	MX-M 125
Id-No.		480040	Coming Soon
Total gripping force	N	1200	1800
Stroke per jaw	mm	8	13
Repeatability	mm	0,02	0,02
Weight	kg	1,355	1,75
Recommended workpiece weight	kg	6	9
Voltage	V	24	24
Current	A	5	5
Protection class		IP64	IP64

MX-L

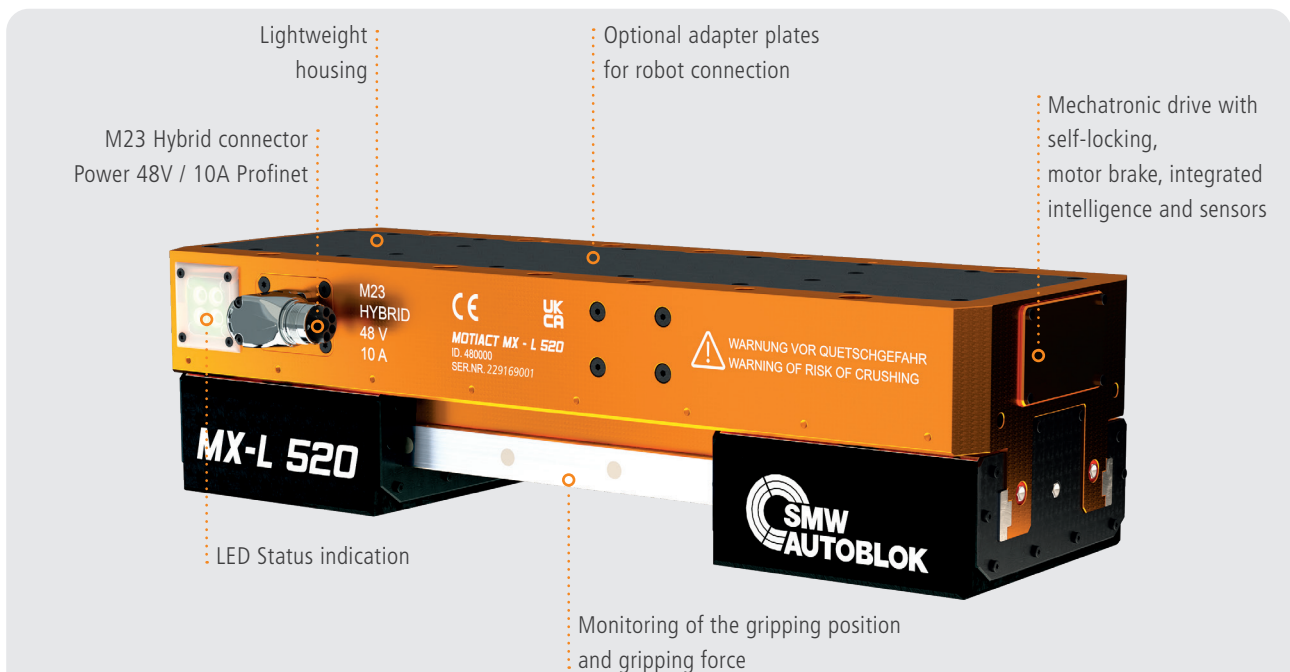
Mechatronic Long stroke gripper - 2 fingers parallel

Application/customer benefits

- Gripping force independent of gripping speed and stroke
- Mechatronic drive with gripping force retention in case of power failure
- Gripping force up to 40 kN
- Position sensing and monitoring of the gripping force
- Pre-positioning and sensitive gripping force adjustment
- Lightweight housing
- IP67 Protection class

- Gripping force 10 - 40 kN; external clamping
- Repeatability 0,02 mm
- Recommended workpiece weight 200 kg
- proofline = sealed - low maintenance
- Power supply 48V / 10A
- Communication interface Profinet (EtherNet/IP communication on request)
- 2 STO Signals

Technical features



SMW-AUTOBLOK Type		MX-L 320	MX-L 520
Id-No.		Coming Soon	480000
Total gripping force	kN	30	40
Stroke per jaw	mm	55	99
Repeatability	mm	0,02	0,02
Weight	kg	30	42
Recommended workpiece weight	kg	150	200
Voltage	V	48	48
Current	A	10	10
Protection class		IP67	IP67

PRS

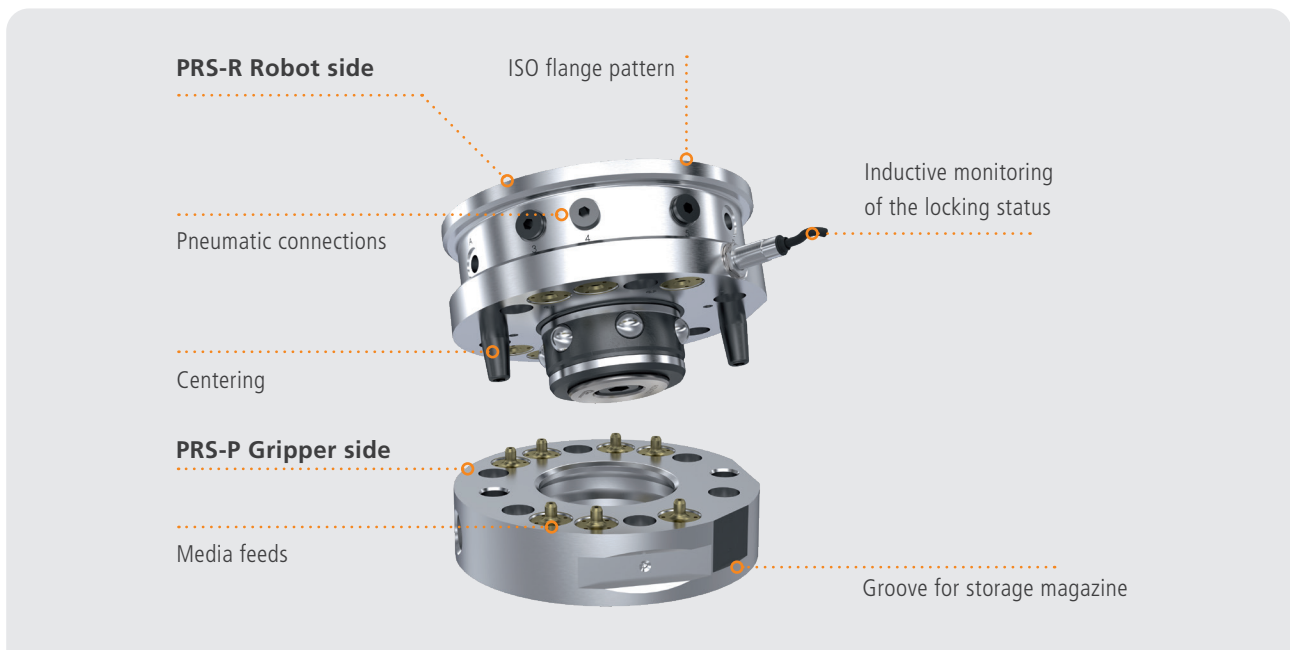
Robot quick change systems gripper

Application/customer benefit

- Quick and safe gripper change
- ISO flange pattern
- Integrated media feed-through
- Integrated interlock status query
- Pneumatic drive
- Self-locking by spring tension (turbo)
- Wear-free and maintenance-free contactless transmission system for energy and signals (optional)

Technical features

- Repeatability 0,015 mm
- Air purge
- Pneumatic nominal pressure 6 bar



SMW-AUTOBLOK Type Robot Side	PRS-R 55	PRS-R 85	PRS-R 110	PRS-R 160	PRS-R 240
Id-No.	46204550	46204600	46204400	46204320	46204500
Recommended handling weight	20 kg	50 kg	75 kg	150 kg	500 kg
Pull-in force Spring	0,7 kN	2 kN	2,0 kN	2,5 kN	12,5 kN
Pull-in force Turbo	3,4 kN	10 kN	11,0 kN	14,0 kN	76 kN
Repeatability	0,015 mm	0,015 mm	0,015 mm	0,015 mm	0,015 mm
Weight	0,5 kg	1,3 kg	3,0 kg	6,0 kg	16,0 kg
SMW-AUTOBLOK Type Gripper Side	PRS-P 55	PRS-P 85	PRS-P 110	PRS-P 160	PRS-P 240
Id-No.	46204565	46204615	46204415	46204330	46204515
Recommended handling weight	20 kg	50 kg	75 kg	150 kg	500 kg
Pull-in force Spring	-	-	-	-	-
Pull-in force Turbo	-	-	-	-	-
Repeatability	0,015 mm	0,015 mm	0,015 mm	0,015 mm	0,015 mm
Weight	0,3 kg	0,7 kg	1,9 kg	4,3 kg	9,5 kg

Accessories Automation

Vises for automation applications

SLX digit



- Digitized vise (hydraulic)
- Monitoring of the jaw position
- Automated jaw change
- Hydraulic operation
- Dimensions 335x170x125 mm
- Clamping force max. 75 kN
- Max. operating pressure 250 bar
- Jaw stroke 55 mm

SLX e-motion

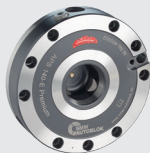


- Mechatronic long stroke vise
- Mechatronic clamping drive
- Dimensions 520x170x125 mm
- Clamping force max. 40 kN
- Monitoring of the clamping force and jaw position
- Pre-positioning and clamping force pre-adjustment
- High-Low clamping
- Jaw stroke 99 mm

Zero-Point Clamping Systems

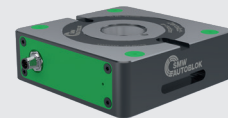
for quick change in automation

APS



- Pneumatic operated
- Low profile design
- Turbo function for highest pull-in forces
- Air Sensing – pneumatic pallet detection
- IP67 Protection class

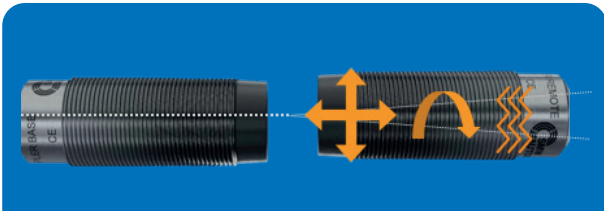
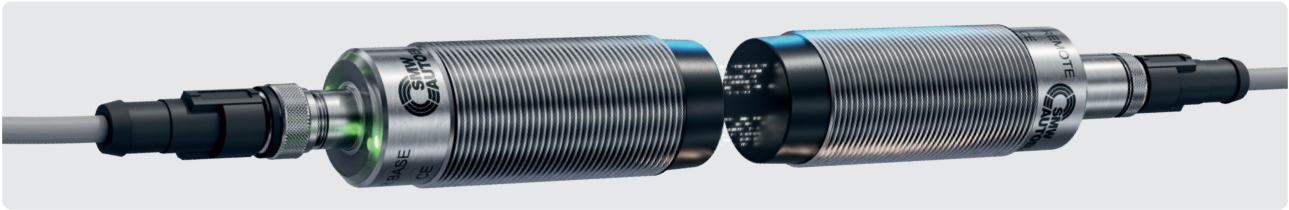
ZeroAct e-motion



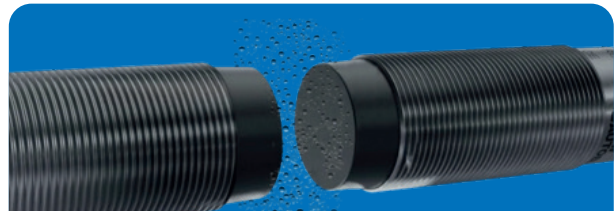
- Mechatronic drive
- Low profile design
- Sensors and control integrated
- e-Sensing - Inductive pallet detection
- IP67 Protection class

Inductive transmission of energy and signals

Contact free transmission of energy and signals via air gap



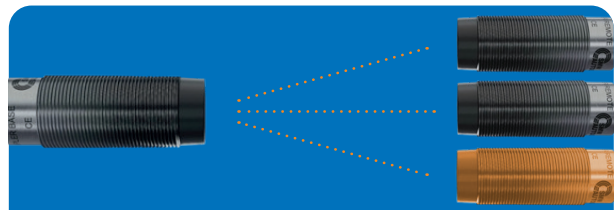
- Flexible installation due to the large transmission distance
- Safe transmission even when the mobile coupler rotates
- Suitable for high speeds
- Insensitive to vibrations
- No cable breakage
- Safe transmission of signals



- Completely free from wear and maintenance
- Can be used in rough conditions
- Suitable for clean room applications
- IP67 Protection class



- Safe transmission even through non-metallic obstacles



- Dynamic Pairing: Base unit (stationary) can communicate with different remote units (mobile)

Technical possibilities and designs of energy and signal transmission

Inductive signal transmission

- Analog signals (0 - 10 V / 4 - 20 mA)
- Temperature signals (PT 100)
- Digital switching PNP signals
- Field bus (CAN or Profibus)
- IO-Link (COM1, COM2, COM3)
- Ethernet (compatible among others with Profinet, Modbus, EtherNet/IP)

Hybrid systems

- Energy transmission via slip ring / contact pins
- Inductive signal transmission

Inductive energy transmission

- Up to 1100 W

Transmission systems

Inductive coupling systems for wear-free power and signal transmission

F180 ETH

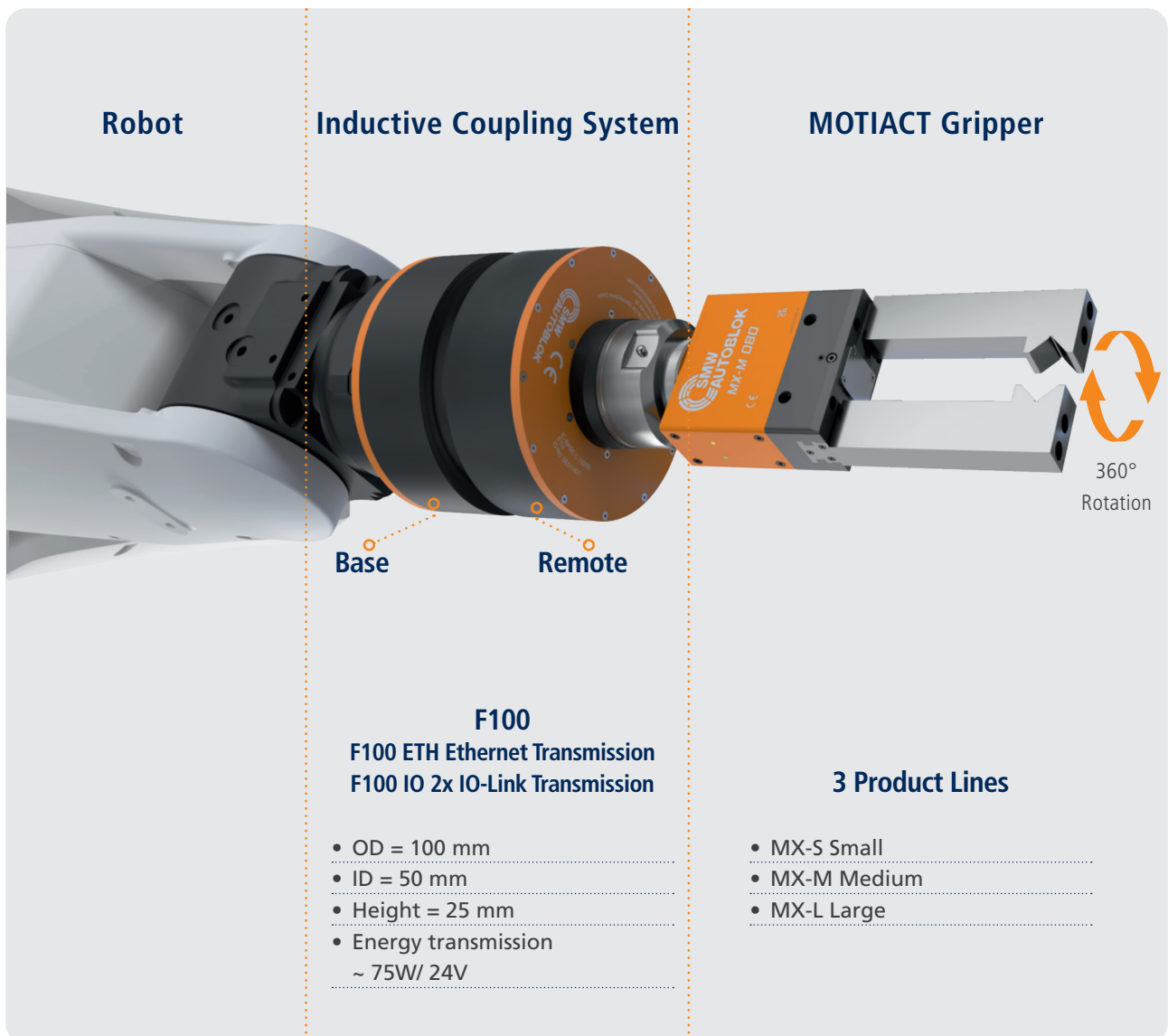


- Diameter Ø 180 mm
- Pass through Ø 85 mm
- Power supply 24V/ 48V
- Transmission distance 0 - 5 mm
- Energy transmission 240W (24V) / 400W (48V)
- Signal transmission Ethernet 100 Base-T
- IP67 Protection class

F100 ETH / F100 2IOL



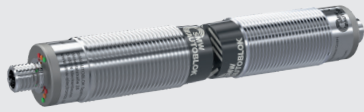
- Diameter Ø 100 mm
- Pass through Ø 50 mm
- Power supply 24V
- Transmission distance 0 - 4 mm
- Energy transmission 75W (24V)
- Signal transmission Ethernet 100 Base-T/
2x IO-Link (COM 1, COM 2, COM 3)
- IP67 Protection class



Transmission systems

Inductive coupling systems for wear-free power and signal transmission

M30-IOL



- Cylindrical coupling system M30
- Power supply 24V
- Transmission distance 0 - 10 mm
- Energy transmission 12W (24V)
- Signal transmission IO-Link (COM 1, COM 2, COM 3)
- IP67 Protection class

C40 AUTOMATION



- Cubical coupling system (40x45x22 mm)
- Ideal suited for EOAT applications
- Power supply 24V
- Transmission distance 0 - 3 mm
- Energy transmission 15W (24V)
- Signal transmission
IO-Link (COM 1, COM 2, COM 3) / 8 PNP Signals / 4 Analog signals 0-10V
- IP67 Protection class

PRS-R Robot side

PRS-R quick change system

PRS-P Gripper side

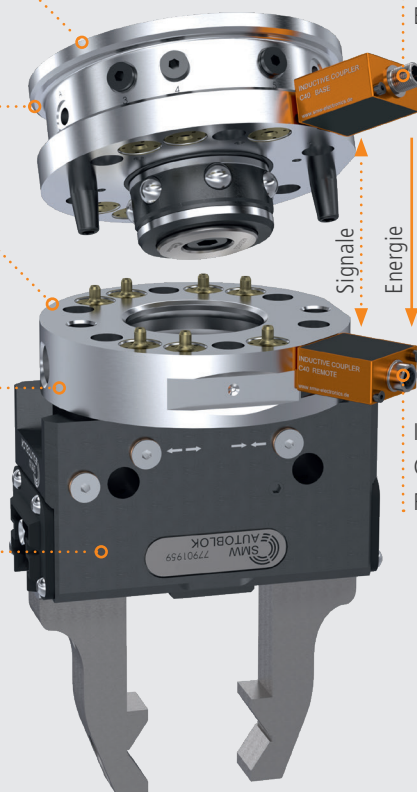
PRS-P quick change system

Gripper

Inductive Coupling System
C40 AUTOMATION
Base

Signale
Energie

Inductive Coupling System
C40 AUTOMATION
Remote

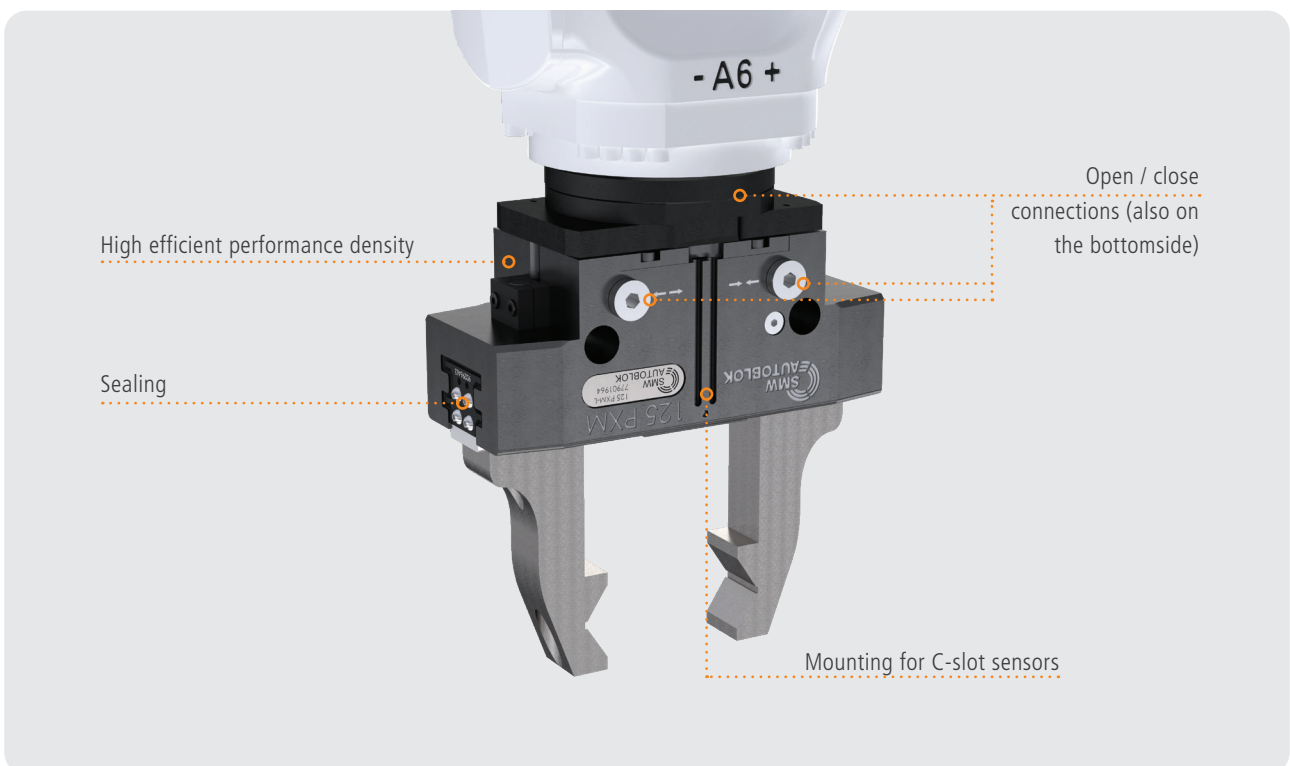


Application examples

MX-L 520 with F180 ETHERNET inductive coupling system in robot application



PXM-L 125 in robot application



**Germany**

SMW-AUTOBLOK Spannsysteme GmbH
Postfach 1151 • D-88070 Meckenbeuren
Wiesentalstraße 28 • D-88074 Meckenbeuren
Tel.: +49 (0) 7542 - 405 - 0
Vertrieb Inland ▶ vertrieb@smw-autoblok.de
Fax: +49 (0) 7542 - 3886
Sales International ▶ sales@smw-autoblok.de
Fax: +49 (0) 7542 - 405 - 181

**Italy**

AUTOBLOK s.p.a.
Via Duca D'Aosta n.24
Fraz. Novaretto
I-10040 Caprie - Torino
Tel. +39 011 - 9638411
Tel. +39 011 - 9632020
Fax +39 011 - 9632288
E-mail ▶ info@smwautoblok.it

**U.S.A.**

SMW-AUTOBLOK Corporation
285 Egidi Drive - Wheeling, IL 60090
Tel. +1 847 - 215 - 0591
Fax +1 847 - 215 - 0594
E-mail ▶ autoblok@smwautoblok.com

**France**

SMW-AUTOBLOK
17, Avenue des Frères Montgolfier - Z.I. Mi-Plaine
F-69680 Chassieu
Tel. +33 (0) 4.72.79.18.18
Fax +33 (0) 4.72.79.18.19
E-mail ▶ autoblok@smwautoblok.fr

**Japan**

SMW-AUTOBLOK Japan Inc.
1-56 Hira, Nishi-Ku
Nagoya
Tel. +81 (0) 52 - 504 - 0203
Fax +81 (0) 52 - 504 - 0205
E-mail ▶ infosaj@smwautoblok.co.jp

**Great Britain**

SMW-AUTOBLOK Telbrook Ltd.
7 Wilford Industrial Estate
Ruddington Lane, Wilford
GB-Nottingham, NG11 7EP
Tel. +44 (0) 115 - 982 1133
E-mail ▶ info@smw-autoblok-telbrook.co.uk

**China**

SMW-AUTOBLOK (Shanghai) Work Holding Co.,Ltd.
Building 6, No.72, JinWen Road, KongGang
Industrial Zone, ZhuQiao Town, Pudong District
201323, Shanghai P.R. China
Tel. +86 21 - 5810 - 6396
Fax +86 21 - 5810 - 6395
E-mail ▶ china@smwautoblok.cn

**Spain**

SMW-AUTOBLOK IBERICA, S.L.
Ursalto 4 – Pab. 9-10 Pol. 27
20014 Donostia - San Sebastián (Gipuzkoa)
Tel.: +34 943 - 225 079
Fax: +34 943 - 225 074
E-mail ▶ info@smwautoblok.es

**Mexico**

SMW-AUTOBLOK Mexico, S.A. de C.V.
Acceso III No. 16 Int. 9,
Condominio Quadrum
Industrial Benito Juarez
Queretaro, Qro. C.P. 76120
Tel. +52 (442) 209 - 5118
Fax +52 (442) 209 - 5121
E-mail ▶ smwmex@smwautoblok.mx

**Canada**

SMW AUTOBLOK CANADA CORP
1460 The Queensway - Suite 219
Etobicoke, ON M8Z 1S7
Tel. +1 416 - 316 - 3839
E-mail ▶ info@smwautoblok.ca

**India**

SMW-AUTOBLOK Workholding Pvt. Ltd.,
Plot No. 4, Weikfield Industrial Estate,
Gat No. 1251, Sanaswadi, Tal - Shirur,
Dist - Pune. 412 208
Tel. +91 2137 - 616 974
E-mail ▶ info@smwautoblok.in

**Taiwan**

AUTOBLOK Company Ltd.
No.6, Shuyi Rd., South Dist.,
Taichung, Taiwan
Tel. +886 4-226 10826
Fax +886 4-226 12109
E-mail ▶ taiwan@smwautoblok.tw

**Turkey**

SMW AUTOBLOK Makina San, Ve Tic. Ltd. ti.
Yeni ehir Mah, Osmanli Blv, Volume Kurtkoy Ofis
No:9, Kat:1, D:4, 32912, Pendik Istanbul
Tel. +90 216 629 - 2019
E-mail ▶ info@smwautoblok.com.tr

**Czech Republic / Slovakia**

SMW-AUTOBLOK s.r.o.
Merhautova 20
CZ - 613 00 Brno
Tel. +420 513 034 157
E-mail ▶ info@smw-autoblok.cz

**Sweden / Norway**

SMW-AUTOBLOK Scandinavia AB
Kasernvägen 2
SE - 281 35 Hässleholm
Tel. +46 (0) 761 420 111
E-mail ▶ info@smw-autoblok.se

**Poland**

SMW-AUTOBLOK Poland Sp. z o.o
Stalowa 17
41-506 Chorzów
Tel. +48 736 059 699
E-mail ▶ info@smwautoblok.pl

**Korea**

SMW-AUTOBLOK KOREA CO., LTD.
1502-ho, Charyong-ro 48beon-gil,
Uichang-gu, Changwon-si
Gyeongsangnam-do, 51391, Republic of Korea
Tel. +82 55 264 9505
E-mail ▶ info-korea@smw-autoblok.net