

NEW



more than
70 years
of quality
in Europe

precision measuring instruments
mechanical - optical - electronical

New products

Revision date: September 2023



NEW

Digital calipers with thin measuring jaws

Digital calipers with extra thin measuring jaws for measuring inside small grooves.

- Measuring range: 0 - 300 mm.
- Resolution: 0.01 mm.
- mm/inch conversion.
- On/off switch.
- Reset.
- Large LCD display.
- Locking screw/flat depth rod.
- Delivery in a case.
- Power supply: 1 battery type V357.

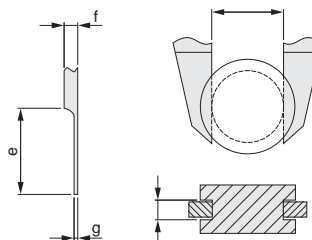


NEW

PRICE



| Item No. | Measuring range/mm | Accuracy mm | e mm | f mm | g mm | Price EUR |
|---|--------------------|-------------|------|------|------|-----------|
| 910.274 | 0 - 150 | ±0.06 | 20 | 3.6 | 0.75 | 98.00 |
| 910.275 | 0 - 200 | ±0.10 | 20 | 3.6 | 0.75 | 126.00 |
| 910.276 | 0 - 300 | ±0.10 | 20 | 3.8 | 1 | 169.00 |
| Option: 836.535 Spare battery type V357 | | | | | | 0.80 |



Filetta

Calipers with prismatic anvil

Calipers with prismatic anvil for measuring objects with an uneven number of grooves like cutters, reamers and drills. The angle of the prism aperture is designed for workpieces having a number of 3 or 5 flutes.

- Measuring range: 1 - 40 mm.
- Locking screw.
- Accuracy: ±0.05 mm.

Analog

- Graduation: 0.02 mm.

Digital

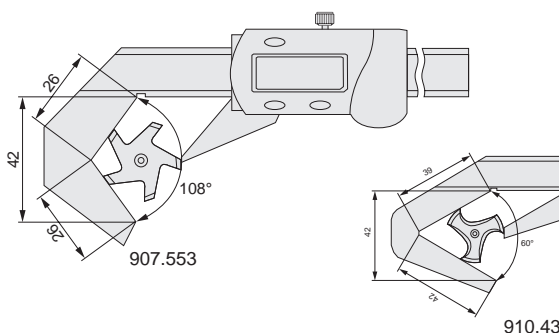
- Resolution: 0.01 mm.
- mm/inch conversion.
- On/off switch.
- Preset.
- Reset.
- Including setting gauge ø 1 mm.
- Power supply: 1 battery type V357.



PRICE

NEW

| Item No. | For work-pieces with | Measuring range/mm | Price EUR |
|---|----------------------|--------------------|-----------|
| Analog | | | |
| 910.431 | 3 flutes | 4 - 40 | 97.00 |
| Digital | | | |
| 907.553 | 5 flutes | 1 - 40 | 125.00 |
| Option: 836.535 Spare battery type V357 | | | 0.80 |



Filetta

NEW

Brass caliper

Brass caliper with a vernier.

- Measuring range: 0 - 100 mm.
- Vernier: 0.1 mm, parallax-free.
- Dovetail guide.
- Antimagnetic.



Filetta

NEW

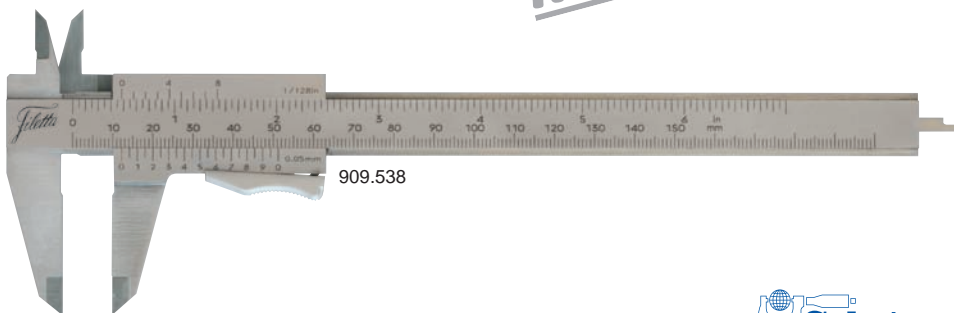
| Item No. | Measuring range/mm | Jaw length mm | Price EUR |
|----------|--------------------|---------------|-----------|
| 841.629 | 0 - 100 | 20 | 5.40 |

Calipers with vernier - brass or parallax-free

- Measuring range: 0 - 150 mm.
- Vernier: 0.05 or 0.02 mm.
- Hardened stainless steel calipers with a matt chrome-plated beam (only 909.538).
- Raised sliders (except 909.538).
- Accuracy: ± 0.03 mm.
- Monoblock.
- Locking screw or spring release.
- Flat depth rod (except 909.423 / 424).
- Thread table on the back side.
- Delivery in a sleeve.



NEW



Filetta



| Item No. | Measuring range/mm | Vernier mm | Jaw length mm | Price EUR |
|--|--------------------|------------|---------------|-----------|
| Brass calipers (without depth rod): | | | | |
| 910.424 | 0 - 150 | 0.05 | 40 | 114.00 |
| 910.423 | 0 - 150 | 0.02 | 40 | 116.00 |
| Parallax-free (spring release): | | | | |
| 909.538 | 0 - 150 | 0.05 | 40 | 55.00 |



NEW

Dial bore gauge for through bores

Dial bore gauge consisting of a grip (clamping shaft \varnothing 8 mm), with a two point split contact point with a needle.

- Measuring range: 3 - 18 mm.
- Measuring elements: hardened steel.
- Measuring needles: hardened steel.
- Including standard dial indicator 0 - 3 mm / 0.01 mm.
- Constant measuring force as a result of a built-in spring, thus eliminating user influence.
- Delivery in a plastic case.

NEW

PRICE

| Item No. | Measuring range/mm | Measuring depth/mm | Number of inserts | Price EUR |
|----------|--------------------|--------------------|-------------------|-----------|
| 910.326 | 3 - 4 | 20 | 4 | 384.00 |
| 910.327 | 4 - 6 | 30 | 4 | 308.00 |
| 910.328 | 6 - 10 | 40 | 4 | 210.00 |
| 910.329 | 10 - 18 | 130 | 8 | 224.00 |



910.329

Optional dial indicators

| Item No. | Measuring range/mm | Graduation mm | Accuracy mm | Price EUR |
|--|-----------------------|---------------|-------------|-----------|
| Analog: | | | | |
| 907.933 ¹ | 0 - 10 | 0.01 | — | 19.00 |
| Digital (with determination of the reversal point): | | | | |
| 910.004 ¹ | 0 - 12.7 | 0.001 | ± 0.004 | 163.00 |
| 909.250 ¹ | 0 - 12.5 | 0.002 | ± 0.015 | 112.00 |
| 909.251 ¹ | 0 - 12.5 | 0.0005 | ± 0.006 | 210.00 |
| 910.340 ² | 0 - 15 | 0.0005 | ± 0.002 | 310.00 |
| Option: | | | | |
| 852.446 | Probe extension 10 mm | | | 5.10 |

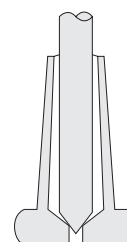
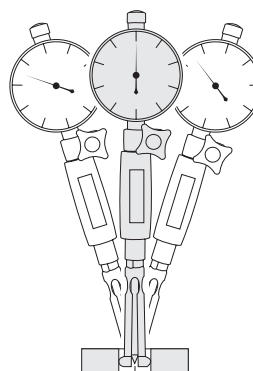
¹ Extension 10 mm 852.446 required (only for 910.326 and 910.327).

² Only suitable for 910.326 and 910.327.



910.327

Filetta



910.004



910.340

NEW

Digital dial indicators with high resolution

Digital dial indicators with digital and digital-analog read-out and a high resolution of 0.0005 mm.

- Measuring range: 0 - 50.8 mm.
- Resolution: 0.0005.
- mm/inch conversion.
- ABS/INC switchable.
- On/off switch.
- USB-C data output: for data transfer to PC (e.g. Excel, Word), operating system Windows and other.
- Multifunctional functions: automatic switch-off, adjustable tolerance limits, reversible measuring direction, hold-function, min/max-function.
- Reset/preset.
- Clamping stem: \varnothing 8 mm.
- Dial diameter: 62 mm.
- Dial 270° rotatable.
- With determination of the reversal point.
- Protection: IP54.
- Delivery with USB-C and a manufacturer measuring report; excluding USB charger.
- Power supply: rechargeable battery.

NEW

PRICE



Filetta

| Item No. | Measuring range/mm | Resolution mm | Accuracy mm | Measuring force/N | Price EUR |
|----------|--------------------|---------------|-------------|-------------------|-----------|
| 910.340 | 0 - 15 | 0.0005 | \pm 0.002 | 1.5 | 310.00 |
| 911.184 | 0 - 25.4 | 0.0005 | \pm 0.002 | 1.5 | 302.00 |
| 911.185 | 0 - 50.8 | 0.0005 | \pm 0.004 | 1.5 | 341.00 |

Center-accessory

Small magnetic dial indicator stand which, in combination with a lever, could also be used as center-accessory to align bores in workpieces. For use in combination with a machine center.

- Permanent magnet \varnothing 30 mm.
- Universal pivot with dovetail clamp.
- Fine adjustment.
- Cylindrical support \varnothing 10 mm for insert in the collet chuck of a machine center.

NEW



PRICE

| Item No. | Description | Price EUR |
|----------|---------------------|-----------|
| 910.341 | Center-accessory | 22.90 |
| 960.490 | Cylindrical support | 21.60 |



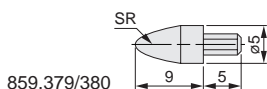
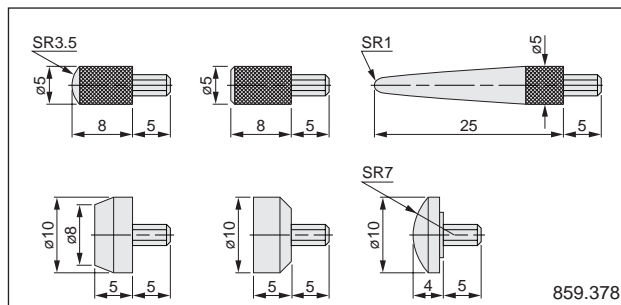
Filetta



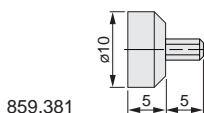
NEW

Peacock inserts for dial indicators

- Screw thread: M2.5.



859.379/380

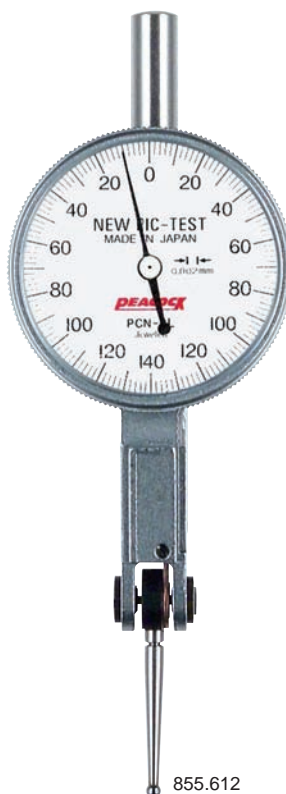


859.381

| Item No. | Description | Price EUR |
|----------|-----------------|-----------|
| 859.379 | Bakelite probe | 16.70 |
| 859.380 | Teflon probe | 16.70 |
| 859.381 | Teflon probe | 20.10 |
| 859.378 | Steel probe set | 56.00 |

Peacock lever-type dial test indicator

- Measuring range: up to 0.28 mm.
- Graduation: 0.002 mm.
- With dovetail joint and clamping stem $\varnothing 6$ mm.
- Measuring force: < 0.3 N.
- Dial diameter: $\varnothing 35$ mm.
- Tungsten carbide stylus tip: $\varnothing 2$ mm.
- Insert thread: M1.7.
- Delivery in a plastic case with a manufacturer measuring report.



NEW

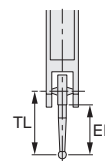
Inserts

| Item No. | Ball \varnothing /mm | Price EUR |
|----------------------|------------------------|-----------|
| For 855.612: | | |
| 859.571 ¹ | 2 | 11.60 |
| 859.572 ¹ | 1 | 16.00 |
| 859.573 ¹ | 0.8 | 16.00 |
| 859.574 ¹ | 0.5 | 58.00 |
| 859.575 ² | 2 | 46.00 |

¹ Tungsten carbide.

² Ruby.

| Item No. | Measuring range/mm | Max. hysteresis mm | Accuracy mm | Graduation mm | Scale numbering | Insert | Total insert length (TL/EL)/mm | Price EUR |
|--------------------|--------------------|--------------------|-------------|---------------|-----------------|---------|--------------------------------|-----------|
| Horizontal: | | | | | | | | |
| 855.612 | 0.28 | 0.004 | ± 0.005 | 0.002 | 0-140-0 | 859.571 | 23.47/19.61 | 136.00 |



NEW

TESA P-Line lever-type dial test indicators

The P-Line range reflects all the quality and high precision of the well-known COMPAC brand.

- Measuring range: up to 3 mm.
- Graduation: 0.01, 0.002 or 0.001 mm.
- With dovetail joint.
- Tungsten carbide stylus tip.
- Insert thread: M1.6.
- ISO 9493.
- Delivery in a plastic case with an inspection report and two clamping stems (783.698 and 782.867).

Inserts

| Item No. | Ball ø/mm | Insert length (L1/L2)/mm | Price EUR |
|----------------------|--------------|-----------------------------|-----------|
| 783.329 ¹ | 0.8 | 18 / 14.26 | 29.00 |
| 783.120 ¹ | 2 | 18 / 14.26 | 28.00 |
| 783.699 ¹ | 3 | 18 / 14.26 | 30.00 |
| 783.036 ¹ | 0.8 | 36 / 32.26 | 31.00 |
| 782.488 ¹ | 2 | 36 / 32.26 | 30.00 |
| 783.419 ¹ | 3 | 36 / 32.26 | 30.00 |
| 783.596 ² | 2 | 18 / 14.26 | 94.00 |
| 783.700 ² | 2 | 36 / 32.26 | 94.00 |

¹ Tungsten carbide.

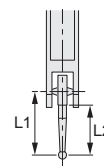
² Ruby.

NEW

783.422



783.425



782.999

| Item No. | Measuring range/mm | Accuracy mm | Graduation mm | Measuring force/N | Dial ø/mm | Scale numbering | Insert length (L1/L2)/mm | Price EUR |
|-------------------------------|-----------------------|----------------|------------------|----------------------|--------------|--------------------|-----------------------------|-----------|
| P-Line, horizontal: | | | | | | | | |
| 783.422 | 1.5 | 0.010 | 0.01 | 0.35 | 27 | 0-25-50 | 18/14.26 | 504.00 |
| 782.414 | 1.5 | 0.010 | 0.01 | 0.35 | 40 | 0-25-50 | 18/14.26 | 509.00 |
| 782.370 | 3 | 0.020 | 0.01 | 0.2 | 27 | 0-50-100 | 36/32.26 | 516.00 |
| 782.347 | 3 | 0.020 | 0.01 | 0.2 | 40 | 0-50-100 | 36/32.26 | 521.00 |
| 783.321 | 0.6 | 0.010 | 0.002 | 0.3 | 27 | 0-5-10 | 18/14.26 | 529.00 |
| 782.994 | 0.6 | 0.010 | 0.002 | 0.3 | 40 | 0-5-10 | 18/14.26 | 534.00 |
| 783.165 | 1.2 | 0.020 | 0.002 | 0.2 | 40 | 0-10-20 | 36/32.26 | 539.00 |
| 782.998 | 0.6 | 0.010 | 0.001 | 0.3 | 40 | 0-5-10 | 18/14.26 | 541.00 |
| P-Line, lateral: | | | | | | | | |
| 783.425 | 3 | 0.020 | 0.01 | 0.2 | 40 | 0-50-100 | 36/32.26 | 521.00 |
| P-Line, perpendicular: | | | | | | | | |
| 782.999 | 3 | 0.020 | 0.01 | 0.2 | 40 | 0-50-100 | 36/32.26 | 521.00 |



NEW

Mini precision clamping tools

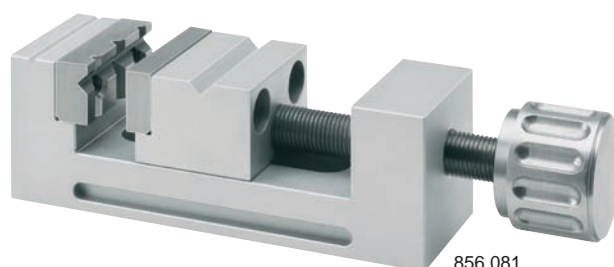
Miniature clamping tools for clamping of small products. Very well suited for measuring for example with roughness testers, microscopes or measuring machines.

Mini precision vises

- Accuracy (parallelism, flatness and squareness): 0.02 mm.
- 856.081: brass, matt chrome-plated; 856.082 and 856.083: aluminum, matt anodized.
- Standard supplied with 2 pairs of jaws (hardened stainless steel and plastic): 1 side with a ground horizontal and vertical prism and 1 flat side.
- 856.081 and 856.082: on the bottom-side provided with 2 x M4 threaded bores with center distances 42 and 62.5 mm; 856.083: on the bottom-side provided with 2 x M6 threaded bores with center distance approx. 83 mm.

Clamp jaw sets

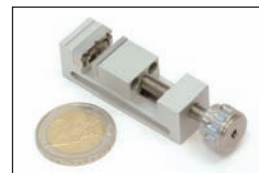
Sets consisting of 1 pair plastic jaws, 1 pair with stepped jaws and 1 jaw with a stopper in the horizontal prism.



856.081

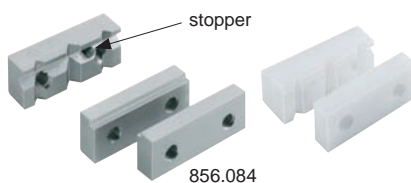


| Item No. | Jaw opening mm | Jaw width mm | Jaw depth mm | Length mm | Weight kg | Price EUR |
|----------|----------------|--------------|--------------|-----------|-----------|-----------|
| 856.081 | 14 | 15 | 8 | 50 | 0.075 | 104.00 |
| 856.082 | 23 | 25 | 15 | 75 | 0.16 | 139.00 |
| 856.083 | 32 | 35 | 21 | 100 | 0.4 | 196.00 |



Options

| Item No. | Description | Price EUR |
|------------------------|-------------|-----------|
| Clamp jaw sets: | | |
| 856.084 | For 856.081 | 42.00 |
| 856.085 | For 856.082 | 57.00 |
| 856.086 | For 856.083 | 85.00 |



856.084



Mini precision vises in a set

Mini precision vises in a set, consists of 856.081, 856.082 and 856.083 with matching clamp jaws.

- Delivery in a plastic carrying case.

NEW



| Item No. | Description | Price EUR |
|----------|-------------------------------|-----------|
| 856.175 | Mini precision vises in a set | 654.00 |

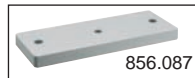
NEW

Stand for mini precision vises

Stand for use with mini precision vises in combination with base plates. The base plates can also be used with other stands. For these stands see dial indicator stands elsewhere in the catalog.

NEW

| Item No. | Description | Price EUR |
|---------------------|-------------------------------|-----------|
| 670.057 | Stand for 856.081 and 856.082 | 129.00 |
| Base plates: | | |
| 856.087 | For 856.081 | 26.00 |
| 856.088 | For 856.082 | 27.70 |
| 856.089 | For 856.083 | 31.20 |



856.087

670.057 +
856.087

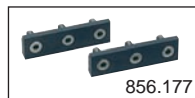
XY table for mini precision vises

XY table for accurate positioning underneath a microscope, for example.

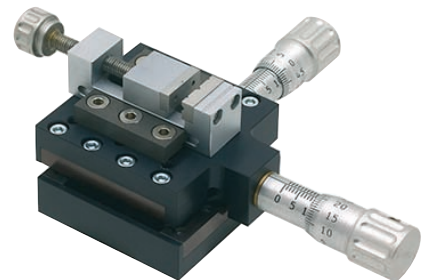
- Dimensions: 50 x 50 x 27 mm.
- Range: 10 x 10 mm.
- Graduation micrometers: 0.01 mm.

NEW

| Item No. | Description | Price EUR |
|----------|---|-----------|
| 856.176 | XY table | 952.00 |
| 856.177 | Adapter for mini precision vise 856.081 | 79.00 |
| 856.178 | Adapter for mini precision vise 856.082 | 100.00 |



856.177

856.176 +
856.177 +
856.081

Mini V-block

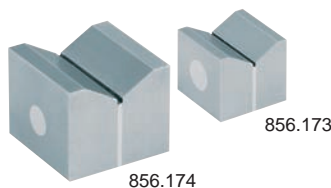
- Dimensions: 25 x 20 x 20 mm.
- Stainless steel construction.
- Delivery incl. clamp.

NEW

| Item No. | Description | Price EUR |
|----------|--------------|-----------|
| 856.179 | Mini V-block | 127.00 |

Mini magnetic V-blocks

- Aluminum, hardened steel.



856.174

856.173

NEW

| Item No. | Description | Price EUR |
|----------|--------------------------------|-----------|
| 856.173 | Mini V-block 20 x 20 x 17.5 mm | 162.00 |
| 856.174 | Mini V-block 30 x 30 x 25 mm | 182.00 |



NEW

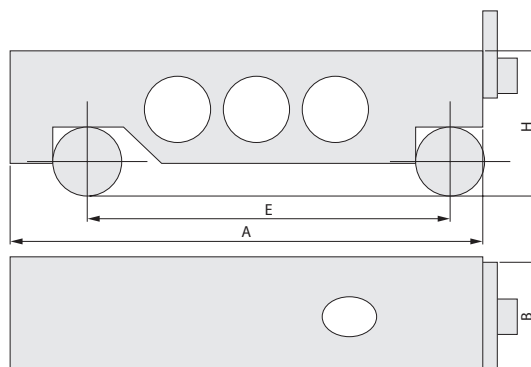
Sine bars

By means of a sine bar and with gauge blocks, a reference plane can be created at an angle of 0° to 60° with respect to the base. The base of the sine bar consists of two rollers with a center to center distance of 100 mm or 200 mm. In order to make a curve the gauge blocks are placed under one of the rollers.

- Straightness and parallelism: 5 µm.
- Surface roughness: Ra 0.8 µm.
- Delivery in a plastic case.



NEW



| Item No. | A | B | H | E | Price EUR |
|----------|-----|----|----|-----|-----------|
| 910.374 | 130 | 30 | 40 | 100 | 142.00 |
| 910.375 | 230 | 30 | 40 | 200 | 251.00 |

Adjustable parallel set

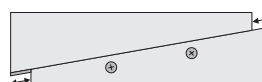
Set of 6 adjustable parallels. The parallels consist of 2 precisely ground tapered parts dovetailed together to ensure easy setting. These allow you to quickly clamp a workpiece in the correct position on a workbench, set a measuring instrument or check the internal dimensions of two parallel surfaces.



NEW



| Parallel | Measuring range/mm | Measuring face length/mm |
|----------|--------------------|--------------------------|
| A | 9.5-12.7 | 45 |
| B | 12.7-17.5 | 54 |
| C | 17.5-23.8 | 69 |
| D | 23.8-33.3 | 90 |
| E | 33.3-44.5 | 107 |
| F | 44.5-57.1 | 117 |



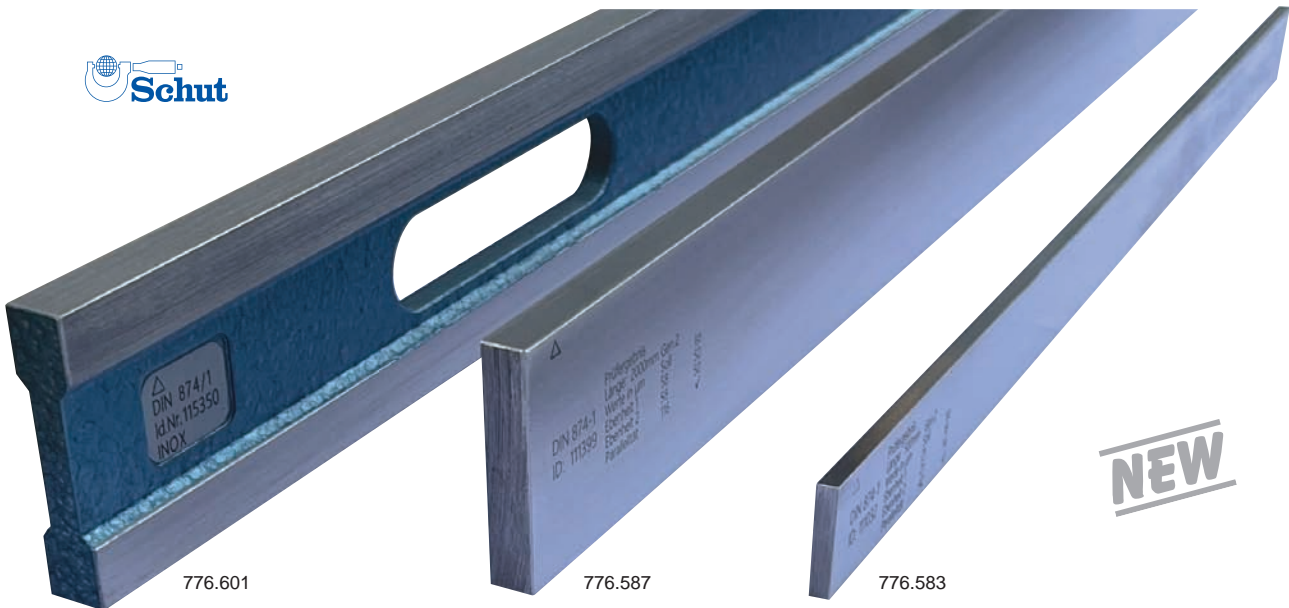
| Item No. | Size/mm | Price EUR |
|----------|-------------|-----------|
| 910.400 | 9.5-57.1 mm | 59.00 |

NEW

Bright steel and stainless steel straight edges DIN 874

High quality wooden cases for straight edges are optionally available.

- Length: 500 - 3000 mm.
- Class 0 and 1: rectangular cross-section up to length 1500 mm, from length 2000 mm I-shaped with two grip slots.
Class 2: rectangular cross-section.
- Flatness of the measuring faces according DIN 874.
- Delivery with a manufacturer measuring report (the rectangular version has the manufacturer measuring report engraved on the straight edge).



| Class | Dimensions/mm | Weight/kg | Item No. | Price EUR | Item No. | Price EUR |
|------------------|-----------------|-----------|------------------------|-----------|------------------------|-----------|
| | | | Bright steel | | Stainless steel | |
| DIN 874/0 | 500 x 50 x 10 | 2.0 | 776.569 | 76.00 | 776.590 | 132.00 |
| | 750 x 50 x 10 | 3.0 | 776.570 | 107.00 | 776.591 | 198.00 |
| | 1000 x 60 x 12 | 5.7 | 776.571 | 189.00 | 776.592 | 321.00 |
| | 1500 x 70 x 15 | 12.4 | 776.572 | 350.00 | 776.593 | 586.00 |
| | 2000 x 80 x 15 | 13.0 | 776.573 ^{1,2} | 643.00 | 776.594 ^{1,2} | 1,172.00 |
| | 2500 x 100 x 16 | 22.0 | 776.574 ^{1,2} | 945.00 | 776.595 ^{1,2} | 1,843.00 |
| | 3000 x 120 x 18 | 36.0 | 776.575 ^{1,2} | 1,418.00 | 776.596 ^{1,2} | 3,240.00 |
| DIN 874/1 | 500 x 40 x 8 | 1.3 | 776.576 | 42.00 | 776.597 | 76.00 |
| | 750 x 50 x 10 | 3.0 | 776.577 | 74.00 | 776.598 | 137.00 |
| | 1000 x 50 x 10 | 4.0 | 776.578 | 87.00 | 776.599 | 198.00 |
| | 1500 x 60 x 12 | 8.4 | 776.579 | 165.00 | 776.600 | 397.00 |
| | 2000 x 70 x 15 | 12.0 | 776.580 ^{1,2} | 435.00 | 776.601 ^{1,2} | 869.00 |
| | 2500 x 80 x 15 | 17.0 | 776.581 ^{1,2} | 614.00 | 776.602 ^{1,2} | 1,143.00 |
| | 3000 x 100 x 16 | 26.0 | 776.582 ^{1,2} | 926.00 | 776.603 ^{1,2} | 2,030.00 |
| DIN 874/2 | 500 x 30 x 6 | 0.7 | 776.583 | 26.50 | 776.604 | 53.00 |
| | 750 x 40 x 8 | 2.0 | 776.584 | 49.00 | 776.605 | 104.00 |
| | 1000 x 40 x 8 | 2.5 | 776.585 | 59.00 | 776.606 | 136.00 |
| | 1500 x 50 x 10 | 5.8 | 776.586 | 112.00 | 776.607 | 255.00 |
| | 2000 x 60 x 12 | 11.2 | 776.587 ² | 170.00 | 776.608 ² | 482.00 |
| | 2500 x 70 x 15 | 20.6 | 776.588 ² | 331.00 | 776.609 ² | 888.00 |
| | 3000 x 80 x 15 | 28.2 | 776.589 ² | 520.00 | 776.610 ² | 1,266.00 |

¹ I-shaped with two grip slots.

² Delivery ex Groningen, Netherlands.

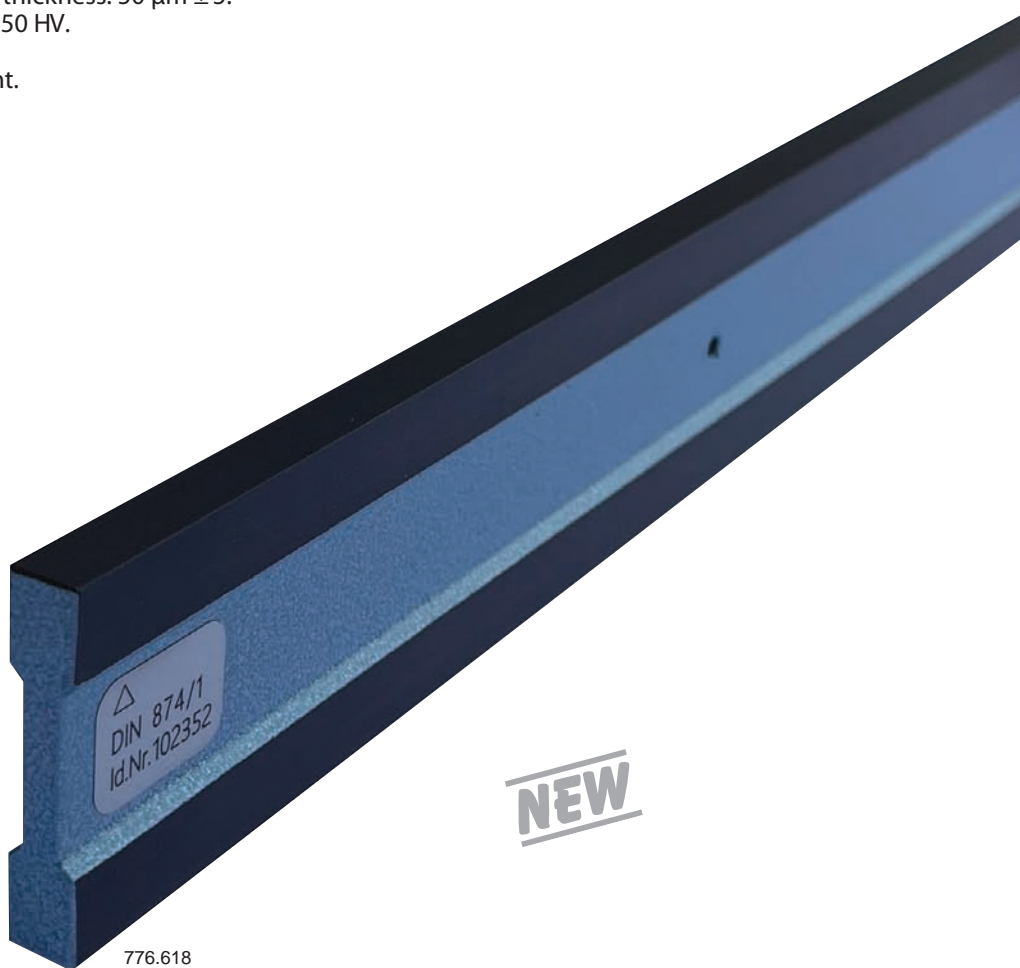


NEW

Aluminum straight edges

Light and therefore easy-to-use straight edges. Especially when using longer straight edges this is undoubtedly of great significance. High quality wooden cases for straight edges are optionally available.

- Length: 500 - 3000 mm.
 - I-shaped, from length 2000 mm with two grip slots.
 - With protective coating, thickness: 50 µm ± 5.
 - Surface hardness: 500 - 550 HV.
 - Highly wear resistant.
 - Highly corrosion resistant.
 - Highly insulating.
- Accuracy according DIN 874.
 - Delivery with an inspection report.



NEW

776.618

| Item No. | Dimensions mm | Weight kg | Price EUR |
|------------------------|------------------|--------------|--------------|
| DIN 874/0: | | | |
| 776.611 | 500 x 60 x 12 | 0.7 | 321.00 |
| 776.612 | 1000 x 60 x 12 | 1.4 | 605.00 |
| 776.613 | 1500 x 100 x 15 | 4.3 | 1,021.00 |
| 776.614 ^{1,2} | 2000 x 100 x 15 | 5.9 | 1,342.00 |
| 776.615 ^{1,2} | 2500 x 100 x 15 | 7.5 | 1,559.00 |
| 776.616 ^{1,2} | 3000 x 150 x 20 | 15.9 | 2,840.00 |

| Item No. | Dimensions mm | Weight kg | Price EUR |
|------------------------|------------------|--------------|--------------|
| DIN 874/1: | | | |
| 776.617 | 500 x 60 x 12 | 0.7 | 227.00 |
| 776.618 | 1000 x 60 x 12 | 1.4 | 510.00 |
| 776.619 | 1500 x 100 x 15 | 4.3 | 813.00 |
| 776.620 ^{1,2} | 2000 x 100 x 15 | 5.9 | 1,106.00 |
| 776.621 ^{1,2} | 2500 x 100 x 15 | 7.5 | 1,370.00 |
| 776.622 ^{1,2} | 3000 x 150 x 20 | 15.9 | 2,320.00 |
| DIN 874/2: | | | |
| 776.623 | 500 x 60 x 12 | 0.7 | 208.00 |
| 776.624 | 1000 x 60 x 12 | 1.4 | 454.00 |
| 776.625 | 1500 x 60 x 12 | 2.1 | 671.00 |
| 776.626 ^{1,2} | 2000 x 60 x 12 | 2.8 | 898.00 |
| 776.627 ^{1,2} | 2500 x 100 x 15 | 7.5 | 1,247.00 |
| 776.628 ^{1,2} | 3000 x 100 x 15 | 8.7 | 1,625.00 |

¹ With two grip slots.

² Delivery ex Groningen, Netherlands.

NEW

Steel straight edges for mounting

I-shaped construction with wide and extra wide measuring faces for application of spirit levels.

- Length: 500 - 4000 mm.
- Flatness of the measuring faces according DIN 874.
- Delivery with an inspection report.

NEW

776.638

With wide measuring faces

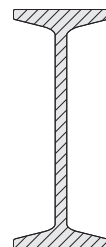
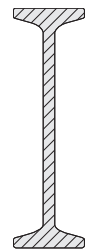
| Dimensions/mm | Weight/kg | Item No. | Price EUR | Item No. | Price EUR |
|-----------------|-----------|----------------------|-----------|----------------------|-----------|
| | | DIN 874/0 | | DIN 874/1 | |
| 1000 x 100 x 30 | 5.0 | 776.631 | 539.00 | 776.645 | 473.00 |
| 1500 x 100 x 30 | 7.5 | 776.632 | 699.00 | 776.646 | 643.00 |
| 2000 x 120 x 40 | 15.0 | 776.633 ¹ | 907.00 | 776.647 ¹ | 869.00 |
| 2500 x 120 x 40 | 19.0 | 776.634 ¹ | 1,247.00 | 776.648 ¹ | 1,181.00 |
| 3000 x 140 x 40 | 26.0 | 776.635 ¹ | 1,578.00 | 776.649 ¹ | 1,493.00 |

¹ Delivery ex Groningen, Netherlands.

With extra wide measuring faces

| Dimensions/mm | Weight/kg | Item No. | Price EUR | Item No. | Price EUR |
|-----------------|-----------|----------------------|-----------|----------------------|-----------|
| | | DIN 874/0 | | DIN 874/1 | |
| 500 x 80 x 40 | 2.0 | 776.636 | 435.00 | 776.650 | 369.00 |
| 750 x 80 x 40 | 3.5 | 776.637 | 491.00 | 776.651 | 416.00 |
| 1000 x 160 x 50 | 12.0 | 776.638 | 718.00 | 776.652 | 605.00 |
| 1500 x 160 x 50 | 18.0 | 776.639 | 992.00 | 776.653 | 832.00 |
| 2000 x 160 x 50 | 24.0 | 776.640 ¹ | 1,276.00 | 776.654 ¹ | 1,077.00 |
| 2500 x 160 x 50 | 30.0 | 776.641 ¹ | 1,748.00 | 776.655 ¹ | 1,370.00 |
| 3000 x 180 x 60 | 45.5 | 776.642 ¹ | 2,690.00 | 776.656 ¹ | 2,270.00 |

¹ Delivery ex Groningen, Netherlands.





NEW

Laser alignment tool

With this alignment tool you can precisely, quickly and easily project vertical, horizontal and crossed laserlines. Within a range of $\pm 4^\circ$ minor inclination errors are automatically compensated by means of the integrated spirit level, to level the projected horizontal line.

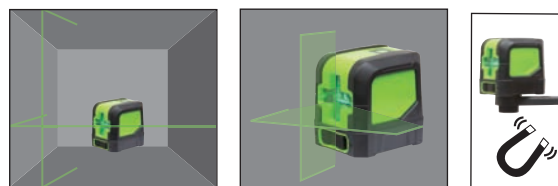
- Range: up to 30 m (dependent on the lighting conditions).
 - Self-levelling range: 4° .
 - Horizontal and vertical accuracy: ± 4.5 mm / 15 m.
 - Laser: 510 - 530 nm, class 2 conform to IEC 60825-1/2007.
 - Lock function for projecting at an angle and transport protection.
 - On/off switch.
 - Dimensions: 74x64x75 mm.
 - Weight: 270 g.
 - Protection: IP54.
- Intake internal thread on the bottom-side: UNC 1/4"-20, thread depth: 8 mm.
 - Delivery in a soft case including a plastic mounting bracket with 2 strong magnets.
 - Power supply: 2 batteries type AA.

NEW



Filetta

| Item No. | Description | Price EUR |
|----------------|--------------------------|-----------|
| 910.369 | Alignment tool | 68.00 |
| Option: | | |
| 495.111 | Spare battery (2 needed) | 0.70 |



Wooden cases for gauge block sets

Wooden cases with cutouts and size indications for



910.361

NEW

| Item No. | Price EUR | Size mm | Increment mm | Pieces |
|-------------------------|-----------|---------------|--------------|--------|
| M32: 910.361 | 33.40 | 1.005 | — | 1 |
| | | 1.01 - 1.09 | 0.01 | 9 |
| | | 1.1 - 1.9 | 0.1 | 9 |
| | | 1 - 9 | 1 | 9 |
| | | 10 - 30 | 10 | 3 |
| | | 50 | — | 1 |
| M47: 910.362 | 33.40 | 1.005 | — | 1 |
| | | 1.01 - 1.09 | 0.01 | 9 |
| | | 1.1 - 1.9 | 0.1 | 9 |
| | | 1 - 24 | 1 | 24 |
| | | 25 - 100 | 25 | 4 |
| M87: 910.363 | 46.00 | 1.001 - 1.009 | 0.001 | 9 |
| | | 1.01 - 1.49 | 0.01 | 49 |
| | | 0.5 - 9.5 | 0.5 | 19 |
| | | 10 - 100 | 10 | 10 |
| M88: 910.364 | 46.00 | 1.0005 | — | 1 |
| | | 1.001 - 1.009 | 0.001 | 9 |
| | | 1.01 - 1.49 | 0.01 | 49 |
| | | 0.5 - 9.5 | 0.5 | 19 |
| | | 10 - 100 | 10 | 10 |
| M103: 910.365 | 52.00 | 1.005 | — | 1 |
| | | 1.01 - 1.49 | 0.01 | 49 |
| | | 0.5 - 24.5 | 0.5 | 49 |
| | | 25 - 100 | 25 | 4 |
| M112: 910.366 | 52.00 | 1.0005 | — | 1 |
| | | 1.001 - 1.009 | 0.001 | 9 |
| | | 1.01 - 1.49 | 0.01 | 49 |
| | | 0.5 - 24.5 | 0.5 | 49 |
| | | 25 - 100 | 25 | 4 |

NEW

Plug gauges G7

Manufactured according DIN 7162. Available from 1 to 20 mm; with Go and NoGo on one handle.

- DIN 7162.
- G7 fit size in hardened steel.
- Available from 1 to 20 mm; with Go and NoGo on one handle.
- With serial number.
- Delivery in a plastic tube with a manufacturer measuring report.
- Including wear allowance at the Go end.

Wear allowance

New gauges are supplemented with a wear allowance on the Go end: z (plus) for plug gauges. Accordingly, the size indicated on the handle is not similar to the measured value of the new Go end.



| Item No. | Size G7 mm | Price EUR |
|----------|------------|-----------|
| 911.158 | 1 | 39.90 |
| 911.159 | 1.5 | 35.80 |
| 911.160 | 2 | 20.50 |
| 911.161 | 2.5 | 19.00 |
| 911.162 | 3 | 19.00 |
| 911.163 | 3.5 | 19.00 |
| 911.164 | 4 | 19.00 |
| 911.165 | 4.5 | 19.00 |
| 911.166 | 5 | 19.00 |
| 911.167 | 5.5 | 19.00 |
| 911.168 | 6 | 15.30 |
| 911.169 | 7 | 17.20 |
| 911.170 | 8 | 17.20 |
| 911.171 | 9 | 17.20 |
| 911.172 | 10 | 17.20 |
| 911.173 | 11 | 18.40 |
| 911.174 | 12 | 18.40 |
| 911.175 | 13 | 18.40 |
| 911.176 | 14 | 18.40 |
| 911.177 | 15 | 20.10 |
| 911.178 | 16 | 21.10 |
| 911.179 | 17 | 21.10 |
| 911.180 | 18 | 21.10 |
| 911.181 | 19 | 23.20 |
| 911.182 | 20 | 25.60 |



NEW

Filetta

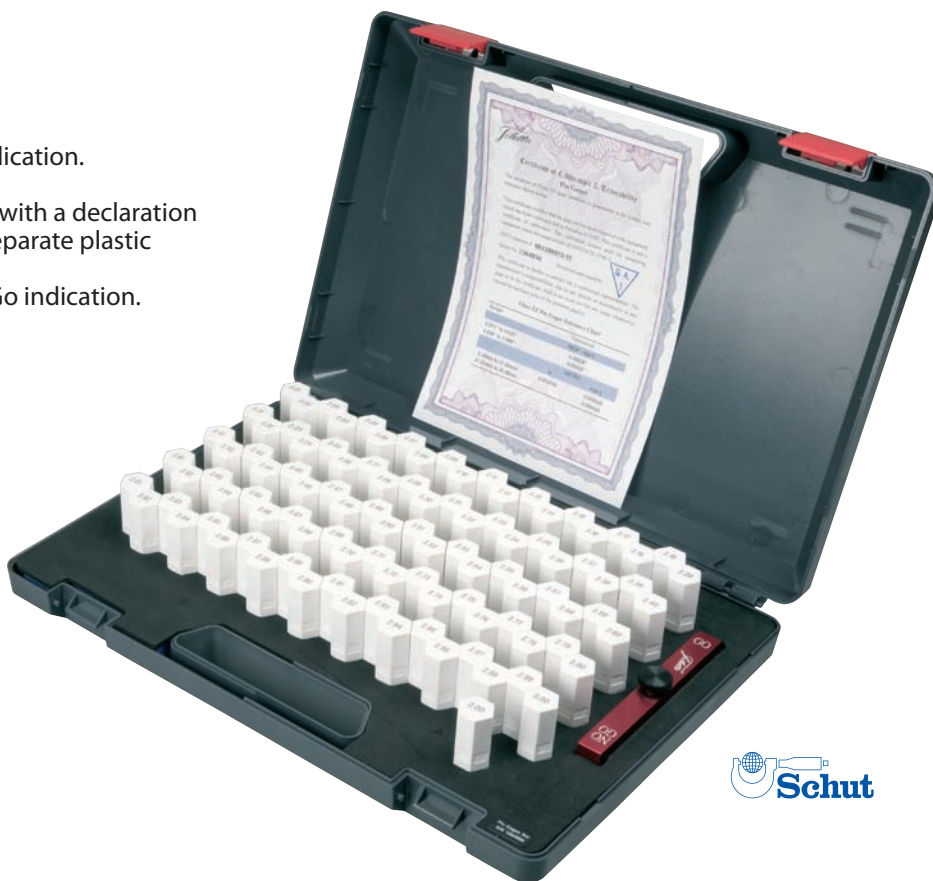


NEW

Pin gauges in sets

Hardened steel pin gauges in sets with favourable price-performance ratio, very well suited for workshop use. Delivery in plastic case with a declaration of conformity and holder for Go/NoGo determination.

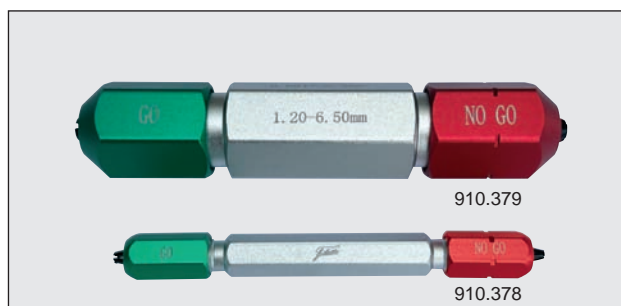
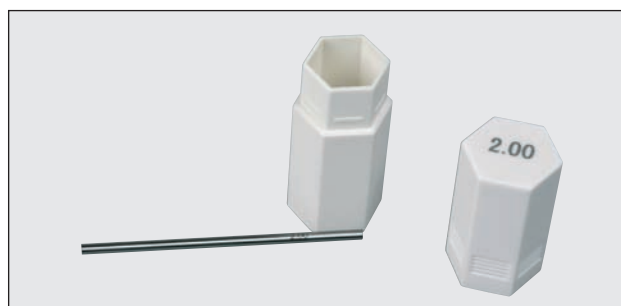
- Hardened steel.
- Diameter range: 0.20 - 20.00 mm.
- Increment: 0.1 mm.
- Accuracy: ± 0.003 mm.
- Without handle.
- Pin gauges $> \varnothing 1.5$ mm with size indication.
- Length: 50 mm.
- Delivered in a plastic carrying case with a declaration of conformity with pin gauges in separate plastic tubes with size indication.
- Delivered with holder with Go/NoGo indication.



Filetta



NEW



| Item No. | Diameter mm | Increment mm | Number per set | Price EUR |
|---|---------------|--------------|----------------|-----------|
| 910.367 | 0.20 - 10.00 | 0.1 | 99 | 199.00 |
| 910.368 | 10.00 - 20.00 | 0.1 | 101 | 345.00 |
| Holders for Go/NoGo determination: | | | | |
| 910.378 | 0.30 - 1.50 | | | 16.80 |
| 910.379 | 1.20 - 6.50 | | | 20.80 |
| 910.380 | 5.00 - 14.00 | | | 25.80 |
| 910.381 | 12.00 - 16.50 | | | 30.90 |
| 910.382 | 14.00 - 19.50 | | | 36.50 |
| 910.383 | 18.00 - 22.00 | | | 41.00 |

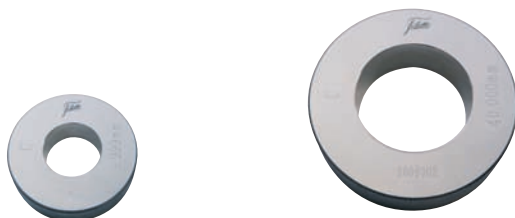
NEW

Setting rings

Manufactured according DIN 2250 form C. Available from 3 to 200 mm.

- DIN 2250 form C.
- Material: hardened steel.
- The size is indicated on the setting rings to three decimal places.
- With serial number.
- Delivery with a manufacturer measuring report.
- Individual setting rings from 3 - 32 mm:
delivery in a plastic case,
individual setting rings from 33 - 200 mm:
delivery in a cardboard case.

Filetta



| Item No. | Size mm | Price EUR | Item No. | Size mm | Price EUR | Item No. | Size mm | Price EUR |
|----------|---------|-----------|----------|---------|-----------|----------|---------|-----------|
| 911.070 | 3 | 23.70 | 911.099 | 33 | 31.80 | 911.131 | 88 | 110.00 |
| 911.071 | 4 | 23.70 | 911.100 | 34 | 31.80 | 911.132 | 90 | 110.00 |
| 911.072 | 5 | 23.70 | 911.101 | 35 | 31.80 | 911.133 | 92 | 110.00 |
| 911.073 | 6 | 21.10 | 911.102 | 36 | 33.70 | 911.134 | 95 | 118.00 |
| 911.074 | 7 | 21.10 | 911.103 | 37 | 33.70 | 911.135 | 98 | 136.00 |
| 911.075 | 8 | 21.10 | 911.104 | 38 | 33.70 | 911.136 | 100 | 136.00 |
| 911.076 | 9 | 21.10 | 911.105 | 40 | 33.70 | 911.137 | 105 | 154.00 |
| 911.077 | 10 | 21.10 | 911.106 | 42 | 38.50 | 911.138 | 110 | 161.00 |
| 911.079 | 11 | 23.00 | 911.107 | 44 | 38.50 | 911.139 | 115 | 174.00 |
| 911.080 | 12 | 23.00 | 911.108 | 45 | 38.50 | 911.140 | 120 | 192.00 |
| 911.081 | 13 | 23.00 | 911.109 | 46 | 46.00 | 911.141 | 125 | 207.00 |
| 911.082 | 14 | 23.00 | 911.110 | 47 | 46.00 | 911.142 | 130 | 217.00 |
| 911.083 | 15 | 23.00 | 911.114 | 48 | 46.00 | 911.143 | 135 | 232.00 |
| 911.084 | 16 | 24.80 | 911.115 | 50 | 46.00 | 911.144 | 140 | 255.00 |
| 911.085 | 17 | 24.80 | 911.116 | 52 | 51.00 | 911.145 | 145 | 278.00 |
| 911.086 | 18 | 24.80 | 911.117 | 55 | 51.00 | 911.146 | 150 | 283.00 |
| 911.087 | 19 | 24.80 | 911.118 | 58 | 57.00 | 911.147 | 155 | 306.00 |
| 911.088 | 20 | 24.80 | 911.120 | 60 | 57.00 | 911.148 | 160 | 323.00 |
| 911.089 | 21 | 28.10 | 911.121 | 62 | 70.00 | 911.149 | 165 | 356.00 |
| 911.090 | 22 | 28.10 | 911.122 | 65 | 70.00 | 911.150 | 170 | 382.00 |
| 911.091 | 23 | 28.10 | 911.123 | 68 | 78.00 | 911.151 | 175 | 407.00 |
| 911.092 | 24 | 28.10 | 911.124 | 70 | 78.00 | 911.152 | 180 | 458.00 |
| 911.093 | 25 | 28.10 | 911.125 | 72 | 84.00 | 911.153 | 185 | 506.00 |
| 911.094 | 26 | 28.10 | 911.126 | 75 | 84.00 | 911.154 | 190 | 546.00 |
| 911.095 | 27 | 28.10 | 911.127 | 78 | 84.00 | 911.155 | 195 | 597.00 |
| 911.096 | 28 | 28.10 | 911.128 | 80 | 84.00 | 911.156 | 200 | 632.00 |
| 911.097 | 30 | 28.10 | 911.129 | 82 | 101.00 | | | |
| 911.098 | 32 | 31.80 | 911.130 | 85 | 101.00 | | | |



NEW

Twist drill grinding gauges

For checking twist drills at their top and on the right value of 120° angle of the twist drill point. The maximum drill diameter is 50 mm.

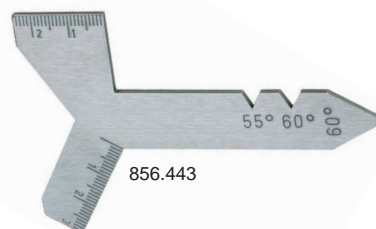
Universal twist drill grinding gauge, also called *Y-gauge*. Besides the standard angle of 120°, this gauge also has a 90° angle for countersink drills, and some special angles for center drills.

NEW



910.372

Filetta



856.443

| Item No. | Description | Price EUR |
|----------|----------------------------|-----------|
| 910.372 | Twist drill grinding gauge | 3.10 |
| 856.443 | <i>Y-gauge</i> | 11.30 |

Digital measuring wedge

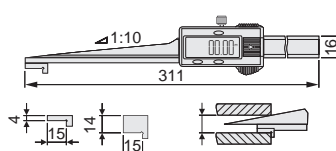
Digital measuring wedge for measurements and checks of slits, key-ways, distances, etc.

- Measuring range: 0.2 - 30 mm.
- Resolution: 0.01 mm.
- mm/inch conversion.
- On/off switch.
- Reset.
- Large LCD display.
- Locking screw.
- Power supply: 1 battery type V357.



NEW

| Item No. | Measuring range/mm | Accuracy mm | Price EUR |
|---------------------------|-------------------------|-------------|-----------|
| 910.283 | 0.2 - 30 | ±0.02 | 263.00 |
| Option: 836.535 | Spare battery type V357 | | 0.80 |



Filetta

Chamfer calipers

- Measuring range: 0 - 8 mm.
- Resolution: 0.01 mm.
- Accuracy: ±0.03 mm.
- mm/inch conversion.
- On/off switch.
- Reset.
- Locking screw.
- Delivery in a case.
- Power supply: 1 battery type V357.

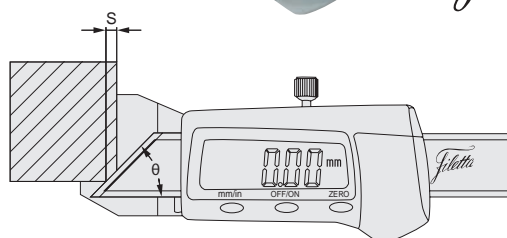
NEW



910.265

Filetta

| Item No. | Angle | Price EUR |
|---------------------------|-------------------------|-----------|
| 910.265 | 30° | 102.00 |
| 910.266 | 45° | 122.00 |
| 910.267 | 60° | 170.00 |
| Option: 836.535 | Spare battery type V357 | 0.80 |



NEW

Stand microscopes 20x ... 100x

These stand microscopes are available in four versions. All four are compact and lightweight, but are especially characterized by their large field of view. Delivered in a case, including LED penlight, matching standard scale and objective. The microscopes come with a Huygens eyepiece (magnification 10x) and with a detachable soft rubber eye adapter. All-purpose use with high precision.

A scale graduation (with a 10 mm scale range) has been engraved on the focusing ring which allows height measurements at a resolution of 0.1 mm.

- Focusing with helicoil ring.
- Eyepiece: 10x.
- Dimensions: $\varnothing 41.5 \times 122$ mm.
- Weight (without batteries): 262 - 264 g.
- Power supply: 1 battery type AAA.

NEW

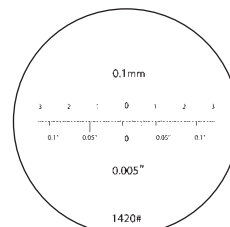
910.411



910.422



910.418



910.414

| Item No. | Magnification microscope | Price EUR |
|-------------------------|--------------------------|-----------|
| Standard scales: | | |
| 910.414 | 20x | 13.60 |
| 910.415 | 40x | 13.60 |
| 910.416 | 60x | 13.60 |
| 910.417 | 100x | 13.60 |
| 910.422 | Individual eyepiece 10x | 36.00 |
| Objectives: | | |
| 910.418 | Individual objective 2x | 75.00 |
| 910.419 | Individual objective 4x | 78.00 |
| 910.420 | Individual objective 6x | 80.00 |
| 910.421 | Individual objective 10x | 82.00 |

| Item No. | Magnification | Objective | Field of view \varnothing /mm | Working distance/mm | Measuring range/mm | Graduation mm | Price EUR |
|-----------------|------------------------|-----------|---------------------------------|---------------------|--------------------|---------------|-----------|
| 910.409 | 20x | 2x | 7.2 | 20 | 6 | 0.05 | 113.00 |
| 910.410 | 40x | 4x | 3.6 | 21 | 3 | 0.02 | 120.00 |
| 910.411 | 60x | 6x | 2.4 | 13.5 | 2 | 0.01 | 125.00 |
| 910.412 | 100x | 10x | 1.45 | 7 | 1 | 0.005 | 131.00 |
| Options: | | | | | | | |
| 497.914 | Spare battery type AAA | | | | | | 0.80 |
| 910.413 | LED penlight | | | | | | 13.10 |



NEW

Stand microscopes 20x ... 100x with LED illumination

These stand microscopes are available in four versions. All four are compact and lightweight, but are especially characterized by their large field of view. Delivered in a case, including LED ring light, matching standard scale and objective. The microscopes come with a Huygens eyepiece (magnification 10x) and with a detachable soft rubber eye adapter. All-purpose use with high precision.

A scale graduation (with a 10 mm scale range) has been engraved on the focusing ring which allows height measurements at a resolution of 0.1 mm.

- Focusing with helicoid ring.
- Eyepiece: 10x.
- Illumination: 3 LEDs.
- Dimensions: $\varnothing 41.5 \times 122$ mm.
- Weight (without batteries): 300 g.
- Power supply: 4 batteries type V394.

NEW



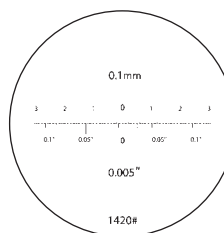
910.404



910.422



910.404



910.414



910.418



| Item No. | Magnification microscope | Price EUR |
|-------------------------|--------------------------|-----------|
| Standard scales: | | |
| 910.414 | 20x | 13.60 |
| 910.415 | 40x | 13.60 |
| 910.416 | 60x | 13.60 |
| 910.417 | 100x | 13.60 |
| 910.422 | Individual eyepiece 10x | 36.00 |
| Objectives: | | |
| 910.418 | Individual objective 2x | 75.00 |
| 910.419 | Individual objective 4x | 78.00 |
| 910.420 | Individual objective 6x | 80.00 |
| 910.421 | Individual objective 10x | 82.00 |



| Item No. | Magnification | Objective | Field of view \varnothing /mm | Working distance/mm | Measuring range/mm | Graduation mm | Price EUR |
|-----------------|------------------------------------|-----------|---------------------------------|---------------------|--------------------|---------------|-----------|
| 910.404 | 20x | 2x | 3.3 | 17 | 3.0 | 0.05 | 122.00 |
| 910.405 | 40x | 4x | 2.0 | 11.7 | 1.6 | 0.02 | 127.00 |
| 910.406 | 60x | 6x | 1.1 | 11.7 | 1.0 | 0.01 | 136.00 |
| 910.407 | 100x | 10x | 0.84 | 11.6 | 0.8 | 0.005 | 143.00 |
| Options: | | | | | | | |
| 420.248 | Spare battery type V394 (4 needed) | | | | | | 1.50 |
| 910.408 | LED ring light | | | | | | 46.00 |

NEW

Circumference tapes

- Separate graduations for circumference and diameter in mm.
- Vernier: 0.1 mm.
- Tape width: 13 mm.
- Stainless steel with yellow plastic coating for easy reading.
- Accuracy according EC class II.



841.468

NEW



841.663



Stainless steel with yellow plastic coating

| Item No. | Diameter mm | Circumference mm | Price EUR |
|----------|-------------|------------------|-----------|
| 841.468 | 20- 300 | 60- 950 | 70.00 |
| 841.469 | 20- 1200 | 60- 3780 | 95.00 |
| 841.470 | 20- 2400 | 60- 7540 | 121.00 |
| 841.471 | 20- 3600 | 60- 11310 | 203.00 |

Stainless steel

| Item No. | Diameter mm | Circumference mm | Price EUR |
|----------|-------------|------------------|-----------|
| 841.663 | 20- 300 | 60- 950 | 58.00 |
| 841.664 | 20- 1200 | 60- 3780 | 86.00 |
| 841.665 | 20- 2400 | 60- 7540 | 109.00 |
| 841.666 | 20- 3600 | 60- 11310 | 192.00 |

Precision tape for circumference and diameter

Precision tape for measuring of circumference and diameters.

- Separate graduations for circumference and diameter in mm.
- Graduation: 1 mm.
- Tape width: 12.5 mm.
- Lock.
- EC class II.
- White varnished very flexible steel strip with mm graduation.

NEW



| Item No. | Diameter mm | Circumference mm | Price EUR |
|----------|-------------|------------------|-----------|
| 911.183 | 20-960 | 60-3000 | 5.60 |





NEW

Digital thermometers

- Measuring range: -50 to 500°C (in combination with the NR-160 probe).
- Resolution: 909.145: 1°C, 910.434: -50°C to 199.9°C: 0.1°C; 200°C+: 1°C.
- Accuracy (H = measured value):
909.145:
-50 to -20°C: ±4°C,
-20 to 0°C: ±3°C,
0 to 500°C: ±(1 + 0.0075 H)°C
910.434:
-50 to 199.9°C: ±(0.3% H + 1°C),
200 to 500 °C: ±(0.3% H + 2°C).
- °C/°F conversion (only 910.434).
- On/off switch.
- Hold function.
- Cable length standard TP01 probe: 1 m.
- Delivery incl. TP01 probe (909.076).
- Weight (incl. battery): 909.145: approx. 150 g, 910.434: approx. 190 g.
- Power supply: 1 battery type PP3 (9 V).



909.145



910.434

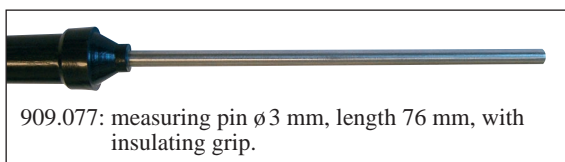
NEW



910.432



910.433



909.077: measuring pin ø3 mm, length 76 mm, with insulating grip.

| Item No. | Measuring range/°C | Price EUR |
|----------------|------------------------------|-----------|
| 909.145 | -50 to 500 | 35.60 |
| 910.434 | -50 to 500 | 57.00 |
| Option: | | |
| 495.161 | Spare battery type PP3 (9 V) | 2.50 |

| Item No. | Type | Measuring range/°C | Applications | Material probe | Price EUR |
|----------|--------|--------------------|---------------------------|-----------------|-----------|
| 909.076 | TP01 | -50 to 200 | air | steel | 6.60 |
| 909.077 | TP02 | -50 to 400 | air, steam, liquids, gels | stainless steel | 7.40 |
| 910.432 | TP04 | -50 to 400 | surfaces (curved model) | steel | 33.30 |
| 910.433 | NR-160 | -50 to 500 | surfaces (straight model) | steel | 33.30 |



ZIBTRPRO
tehnologija obdelave · vpenjalni sistemi