

**EWS** . *Ready Safe and Go*

More output, less downtime.

The EWS Varia setup concept for turret machines.

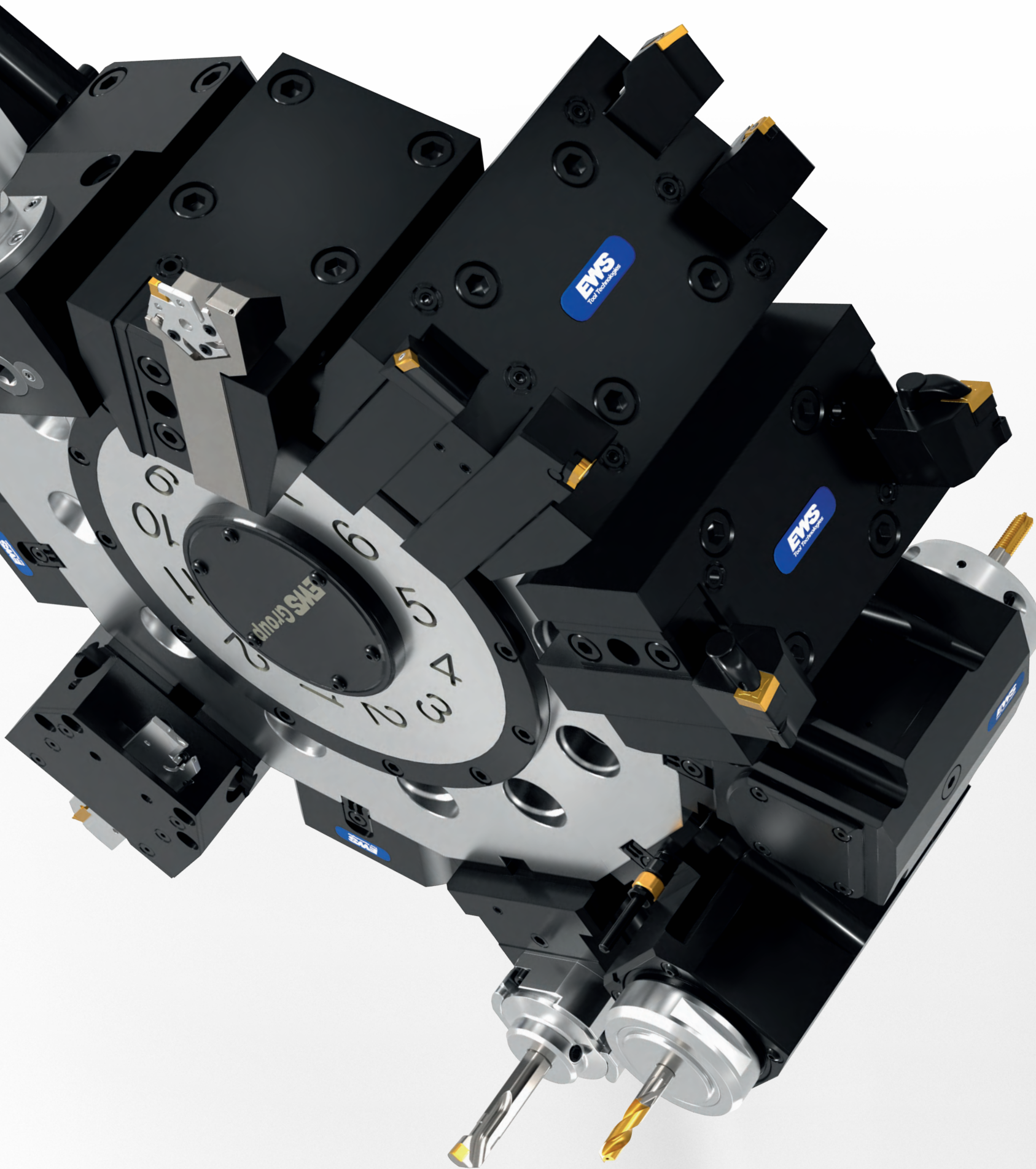


# EWS . Ready Safe and Go

Take your setup processes to the next level:  
faster, safer, more standardized – for maximum machine availability.

## The result in practice:

- Significantly less setup time per station
- Less machine downtime per shift
- Higher productivity



## Multiple mountings for permanent tools

External turning, cutting, and other operations remain securely clamped in double/quadruple holders: no retooling necessary.

The free flex slots are occupied by Varia clamping units. This turns your turret into an integrated tool magazine.

# EWS . Ready Safe and Go

The setup concept for turret machines.

## The starting point

- Setup processes cost valuable time
- Tools are changed directly in the work area
- **High risk of injury when loosening clamping nuts due to:** Rotational movement in the work area past cutting edges, or slipping when the nut is suddenly loosened.
- Incorrect handling damages tools and turrets
- High time requirements and a lack of standardization in setup lead to collisions or rejects
- Data break between CAD/CAM and machine



Machine and part range.

## Pit stops win races

Setup times are show stoppers and block manpower and machines. Those who change over quickly and safely stay ahead.



## The solution

### ✓ Ready

- Planning directly via the **EWS E-Shop**, including collision checking and turret position optimization
- Tool provision during non-productive time
- Standard turning tools remain on the turret
- Change tools mounted, measured, and labeled in the **EWS T-Carrier** or T-Shuttle

### ✓ Safe

- CAM program clearly assigns available tools
- Tool change in 20 seconds with safe one-hand operation
- Zero risk for people and machines

### ✓ Go

- Start machine
- Produce parts
- Increase performance and profits



**EWS . Ready Safe and Go**

## Your competitive advantage

With **EWS Ready, Safe and Go**, every tool change becomes a predictable 20-second pit stop. Tailored to your machine and workpiece family

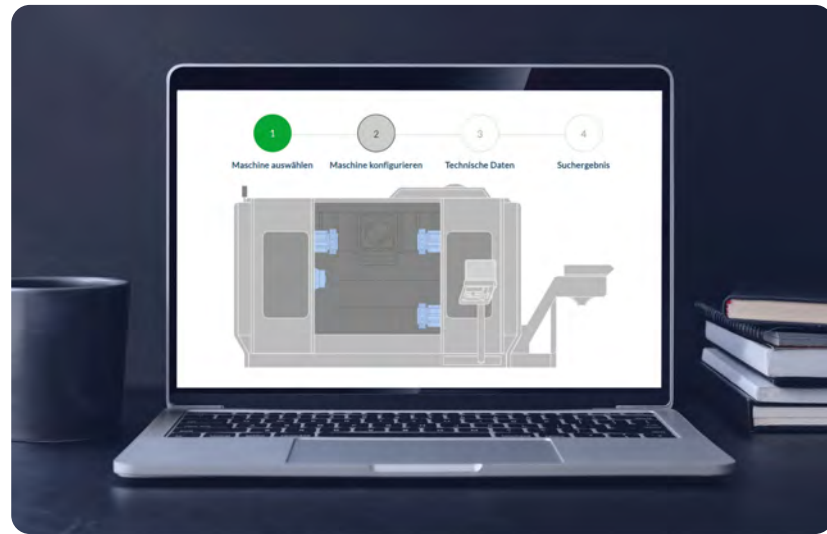
Make future-proof setup processes a series production success.

# EWS . Ready Safe and Go

Plan, simulate, set up

## From the machine to the perfect setup.

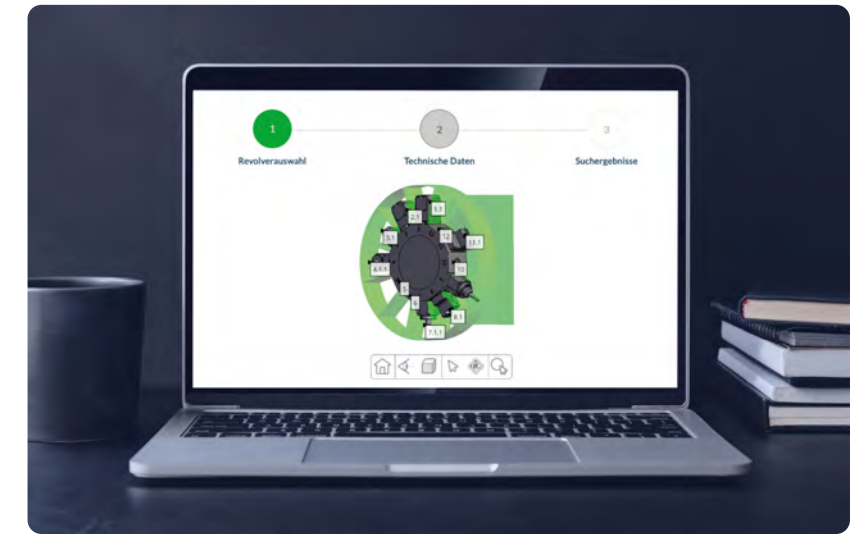
Use our **EWS** Tool Finder to create your setup layout in just a few clicks.



Setup processes at the highest level with our **EWS** online tools

## You know your machine, but not the turret?

Our 3D turret assistant helps:



### 1. Select machine

Select machine from the **EWS** database :

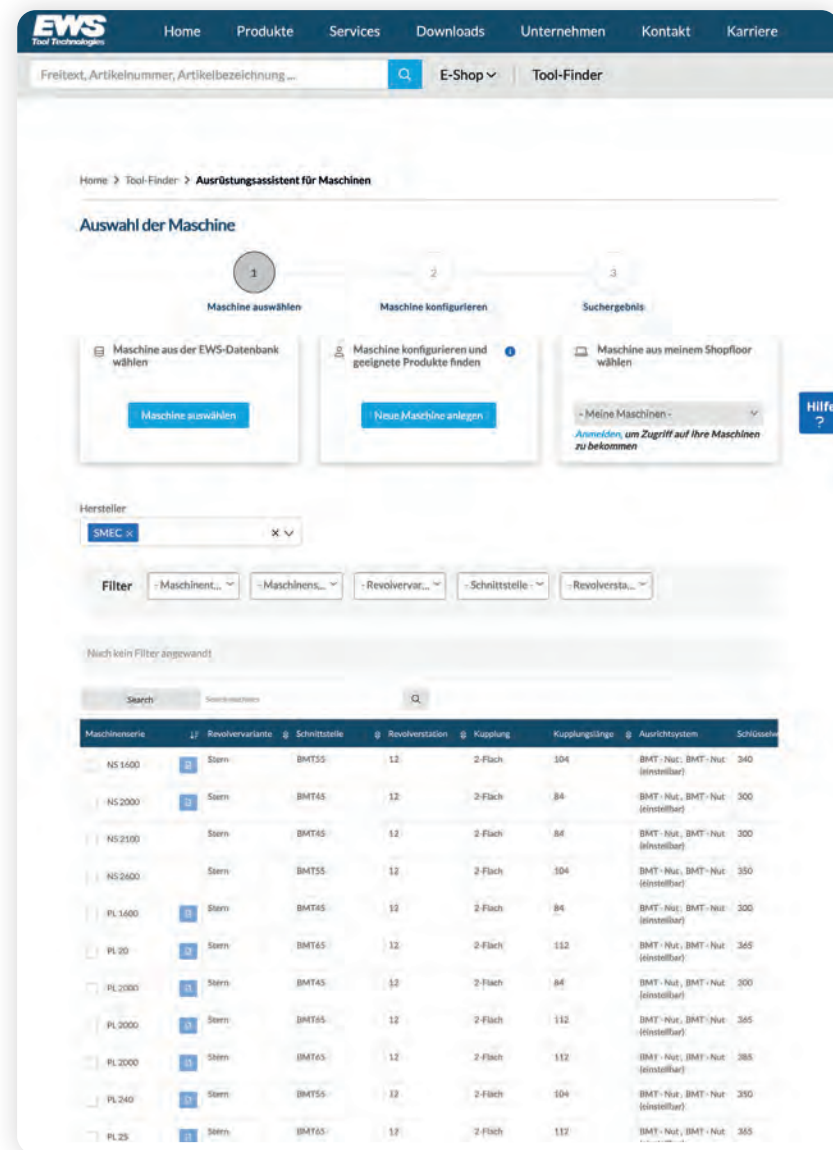
- Access an existing database of machines.

Create new machine:

- Manual configuration of a machine by the user.

Select machine from my shop floor:

- Prerequisite: Login; access to user-specific machines.



### 1. Turret selection

- Select the turret from a database based on manufacturer and properties.

### 2. Technical data

- Query or confirmation of technical details (e.g., interface, positions, etc.)

### 3. Search results

- Relevant products or compatible components based on selection and data



# EWS .Ready Safe and Go

Efficiency in 5 clear steps

## 1 Plan, simulate, set up

With the **EWS Tool finder**, simulate the turret layout, check for collisions, and find the right **EWS.Varia** Equipment.



## 2 Mount

**Various**-Install inserts including cutting tools on the mounting block outside the machine.



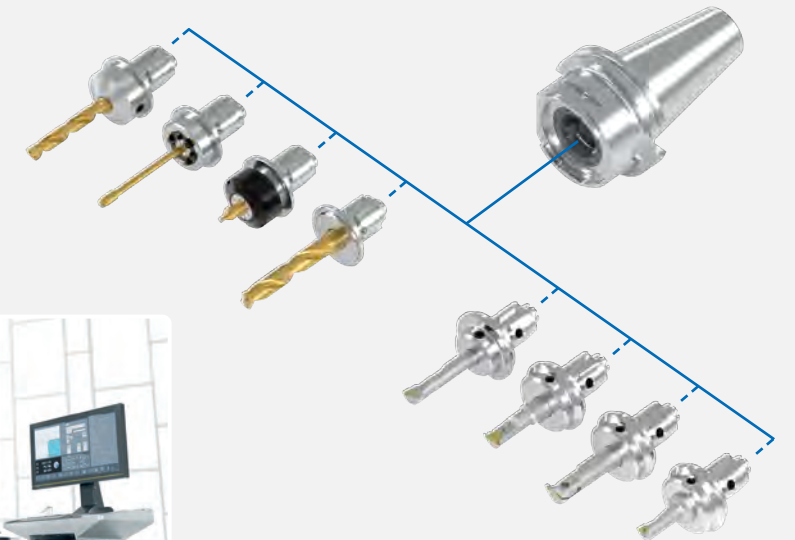
## 5 Quick change

**20 Sec.** **EWS .Varia**  
**240 Sec.** Conventional tool change  
**91,7 %** Time saved per change



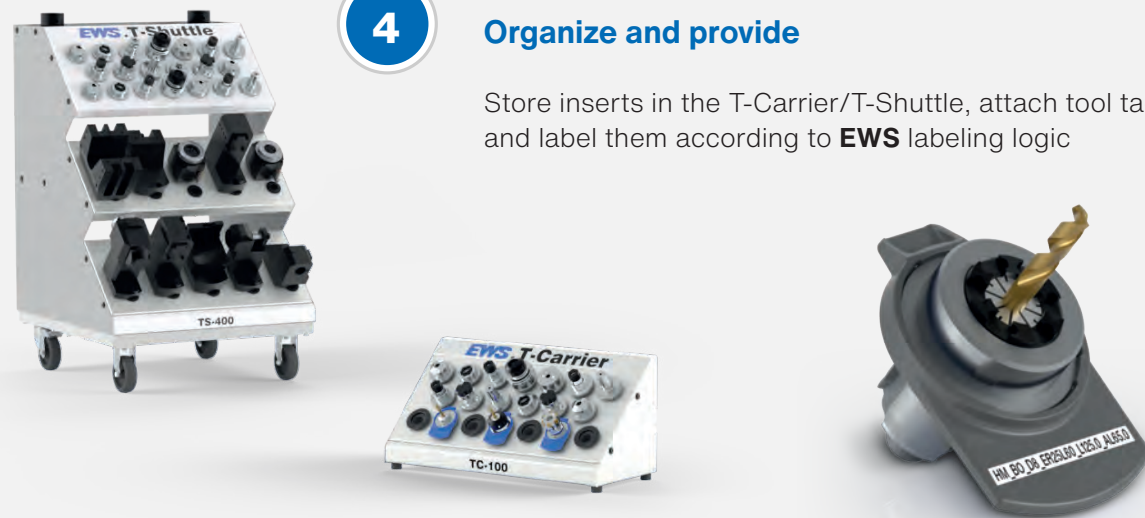
## 3 Preset

Record lengths and radii externally with a presetter and **Varia adapter** and transfer them to the CNC program.



## 4 Organize and provide

Store inserts in the T-Carrier/T-Shuttle, attach tool tags, and label them according to **EWS** labeling logic



### EWS Labeling logic with example

Material	Tool	Diameter	Tool carrier	Total length (L)	Tool length (AL)
HM	NCAB	D10.0	SHRL100	L165.0	AL65.0



# EWS . Ready Safe and Go

This is what efficiency looks like in practice



1

4

3

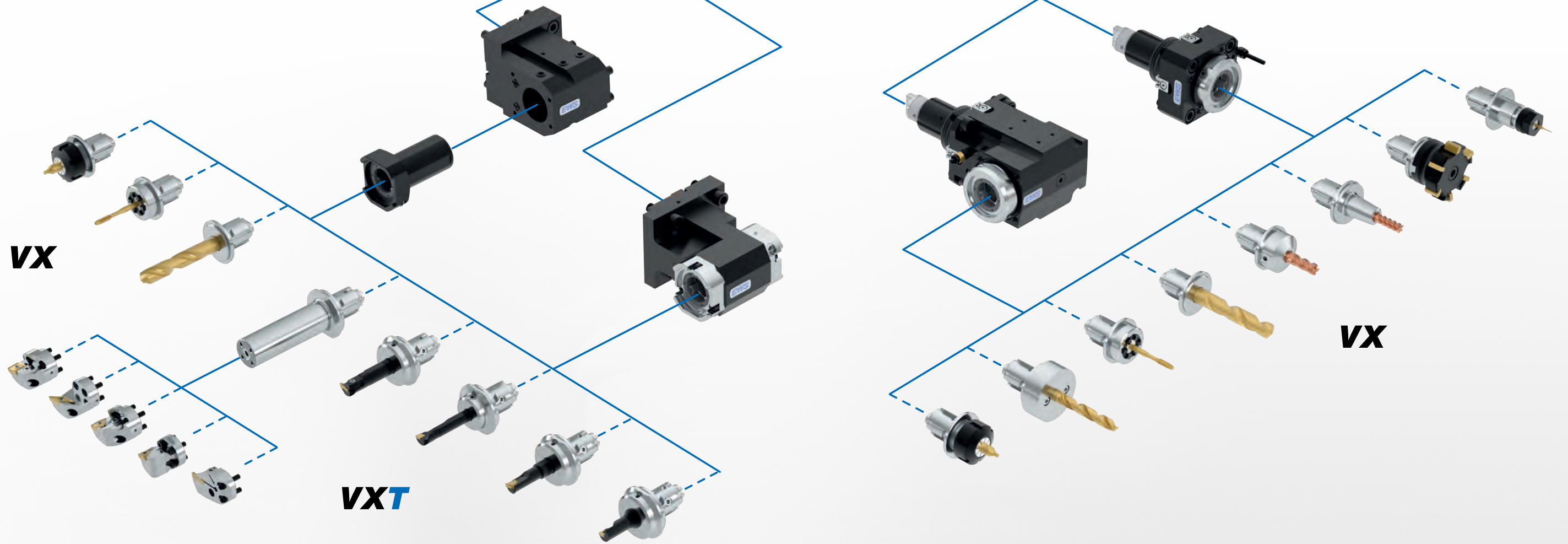
5

2

## The way to be successful

1. Planning, simulation, setup
2. Assemble
3. Presetting
4. Organize and deploy
5. Quick change





**i**  
In combination, **EWS.Varia VXT** and **EWS.Varia VX** cover the most frequently changing machining operations.

## EWS.Varia VX

### Centric drilling operations

- Thread drilling/forming/milling
- Core hole drilling
- Centering drilling
- Countersinking

## EWS.Varia VXT

### Internal turning

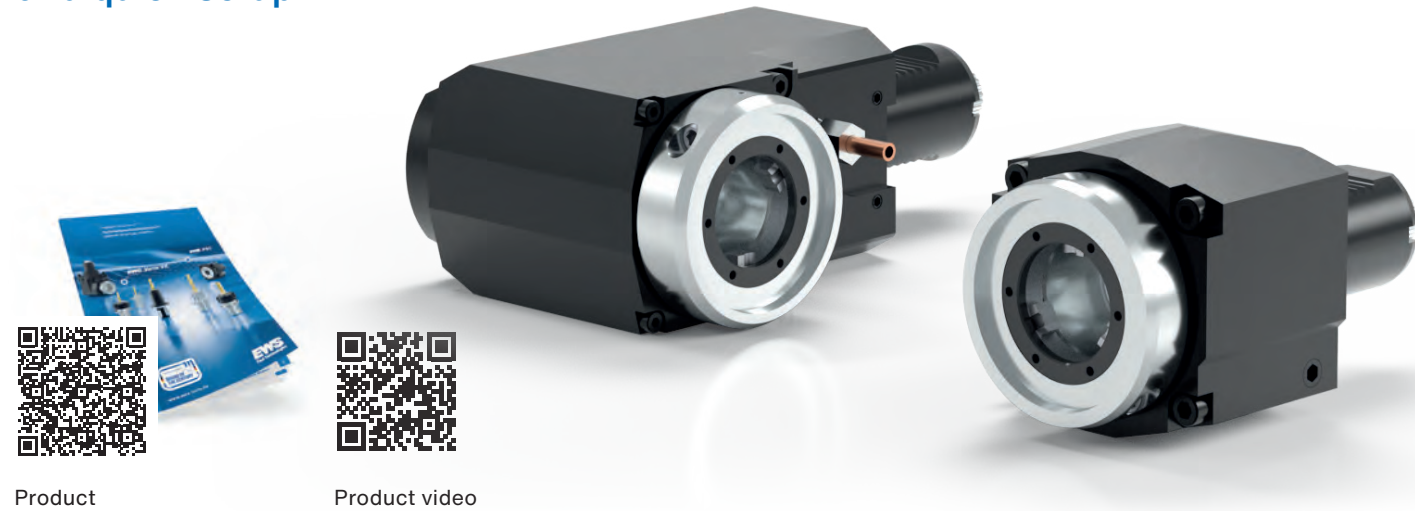
- Roughing
- Finishing
- Grooving
- Thread turning

### Axial radial: Drilling/milling operations AGW

- Thread drilling/forming/milling
- Core hole drilling
- WSP rough milling
- NC drilling
- Solid carbide roughing/finishing milling
- Deburring milling

# EWS.Varia

The interchangeable system for safe and quick setup!



Product

Product video

## The EWS tool magazine for your turret.

With our **EWS Varia** starter kits and the **EWS Ready-Safe-Go** setup concept, you can fully equip your machine's turret.

Preconfigured, safe, and ready for immediate use.

**EWS Varia Start Kit + EWS Ready, Safe and Go.**  
= Your turnkey revolver tool magazine



The perfect start: EWS Varia Start Kits for maximum setup efficiency.

## VX3STARTKIT2 (No.: 216274)

### Start Kit 2 "Professional"



## EWS.Varia VX3

- 1x T-Carrier TC-100 VX3-20 (No.: 216176)
- 4x ER25L30 collet insert (No.: 31.VX325L30)
- 1x Collet wrench ER25 (No.: 225)
- 1x Collet insert IM ER20L17 (No.: 31.VX320IML17)
- 1x Collet wrench for IM ER20 (No.: 220AX)
- 1x Adapter for combination holder 032 (No.: 19.32VXT3-ZYL)
- 5x Tool tags (No.: PT.VX3)
- 1x Torque wrench (No.: DSV SW5/05.7NM)
- 1x Mounting block (No.: MB-VX3)

## VX4STARTKIT2 (No.: 216493)

### Start Kit 2 "Professional"



## EWS.Varia VX4

- 1x T-Carrier TC-100 VX4-20 (No.: 216178)
- 4x Collet insert ER32L30 (No.: 31.VX432L30)
- 1x Collet wrench ER32 (No.: 232)
- 1x Collet insert IM ER25L16 (No.: 31.VX425IML16)
- 1x Collet wrench for IM ER25 (No.: 225AX)
- 1x Adapter for combination holder 040 (No.: 19.40VXT4-ZY)
- 5x Tool tags (No.: PT.VX4)
- 1x Torque wrench (No.: DSV SW5/05.7NM)
- 1x Mounting block (No.: MB-VX4)

# EWS Group

Tooling Systems and Turrets

## EWS USA

### EWS USA

13931 Sunfish Lake Blvd NW  
Ramsey · MN 55303 USA  
Telefon +1-763-576-6910  
E-Mail support@ews-tools.com  
www.ews-tools.com

## EWS Tool Technologies

### EWS Weigle GmbH & Co. KG

Maybachstraße 1 · D-73066 Uhingen  
Telefon +49(0)7161-93040-100  
E-Mail info@ews-tools.de  
www.ews-tools.de

## EWS Türkiye

### EWS Tutucu Sistemleri ve Taretleri Anonim Şirket

Aydınlı mah. Melodi No.2/19 Sk. Bİlmo  
San.Sit. 18-19 · 34956 Tuzla / İstanbul  
Turkey  
Telefon +90-216-593-22-44  
E-Mail mehmet@ewstools.com  
www.ews-tools.de

## EWS China

### EWS Tool Holder Technologies (Taicang Co. Ltd)

Beijing East Road No. 88  
215400 Taicang · Jiangsu  
P. R. China  
Telefon +86-512-3306-2600  
E-Mail sales.cn@ews-tools.de  
www.ews-tools.cn

## EWS Korea

### EWS Korea Co. Ltd.

80-101 · Golden root-ro  
Juchon-myeon · Gimhae-si  
Gyeongsangnam-do · Korea  
Telefon +82-55-267-8085  
E-Mail info@ewskorea.co.kr  
www.ewskorea.co.kr



# ZIBTRPRO

tehnologija obdelave · vpenjalni sistemi