

Verschraubung

Ball cooling pipe with nut

Boule frais tube avec vissage

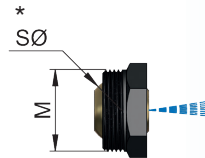
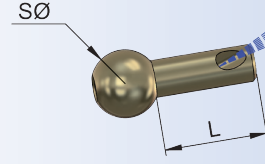
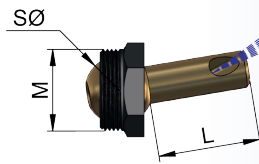
Somunlu su verme misketi

Bestell-Nr. Order Nr. Référence Sipariş Nr.	M	SØ	L	Euro
--	---	----	---	------

703.M10.15	M10x1	8	15	
703.M10.30	M10x1	8	30	
703.M10.50	M10x1	8	50	

703.M12.15	M12x1	10	15	
703.M12.30	M12x1	10	30	
703.M12.50	M12x1	10	50	

* 704.M10	M10x1	8	-	
* 704.M12	M12x1	10	-	



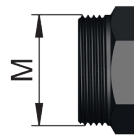
Bestell-Nr. Order Nr. Référence Sipariş Nr.	SØ	L	Euro
--	----	---	------

703.S08.15	8	15	
703.S08.30	8	30	
703.S08.50	8	50	

703.S10.15	10	15	
703.S10.30	10	30	
703.S10.50	10	50	

Bestell-Nr. Order Nr. Référence Sipariş Nr.	M	Euro
--	---	------

703.M10	M10x1	
703.M12	M12x1	



Kegelwischer

Taper wiper

Cônes de nettoyage

Konik temizleyici

Bestell-Nr. Order Nr. Référence Sipariş Nr.	Abmessung Size Dimension Cinsi	Euro
--	---	------

710.01	MK 1	
710.02	MK 2	
710.03	MK 3	
710.04	MK 4	
710.05	MK 5	

710.30	SK 30	
710.40	SK 40	
710.50	SK 50	

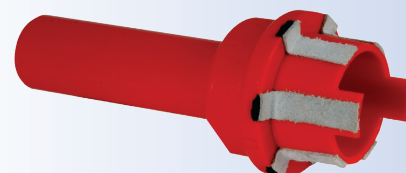
710.32.HSK	HSK 32	
710.40.HSK	HSK 40	
710.50.HSK	HSK 50	
710.63.HSK	HSK 63	
710.80.HSK	HSK 80	
710.100.HSK	HSK 100	



MK



SK



HSK



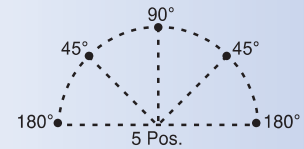
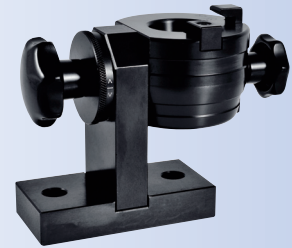
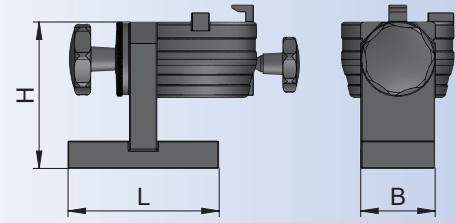
Montageblock aus Stahl, schwenkbar

Universal assembly block steel

Bloc de montage universel en fer

Çelik montaj aparatı sağa ve sola 90° dönebilen

Bestell-Nr. Order Nr. Référence Sipariş Nr.	Abmessung Size Dimension Cinsi	L	H	B	Euro
705.30	SK 30	125	121	64	
705.40	SK 40	130	136	64	
705.50	SK 50	170	170	72	
709.16	VDI 16	100	97	48	
709.20	VDI20	100	97	48	
709.25	VDI 25	100	97	48	
709.30	VDI 30	130	121	64	
709.40	VDI 40	130	136	64	
709.50	VDI 50	170	170	72	
708.32	HSK32-A	100	97	48	
708.40	HSK40-A	100	97	48	
708.50	HSK50-A	125	121	64	
708.63	HSK63-A	130	136	64	
708.80	HSK80-A	170	170	72	
708.100	HSK100-A	170	170	72	



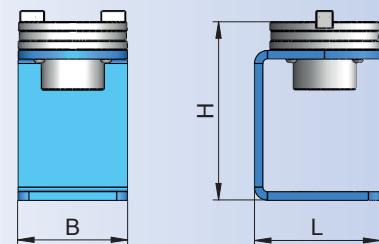
Montageblock aus Stahl

Assembly block steel

Bloc de montage

Çelik montaj aparatı

Bestell-Nr. Order Nr. Référence Sipariş Nr.	Abmessung Size Dimension Cinsi	L	H	B	Euro
707.30	ISO 30	111	153	88	
707.40	ISO 40	114	157	100	
707.50	ISO 50	160	200	144	





Schnellmontageblock mit Rollenlager aus Stahl, Universal

Fast-mounting assembly block steel, universal

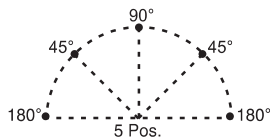
Bloc de montage rapide de l'acier, universel

Pratik universal çelik montaj aparatı

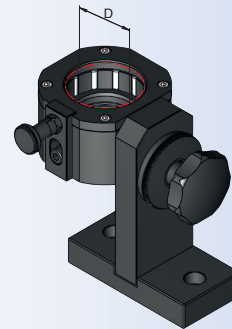
Bestell-Nr. Order Nr. Référence Sipariş Nr.	Abmessung Size Dimension Cinsi	D	Euro
705.40/63	SK 40-BT 40-HSK 63-EPS 63	63	

- * Zur Aufnahme von HSK 63 - EPS 63 - SK 40 - BT 40
For clamping of HSK 63 - EPS 63 - SK 40 - BT 40
Pour le serrage de HSK 63 - EPS 63 - SK 40 - BT 40
HSK 63 - EPS 63 - SK 40 - BT 40 tipi başlıklar için

- * 45° und 90° - 5 verschiedene Positionen verwendbar
45° and 90° - can be used in 5 different positions
45° et 90° - 5 différentes positions applicables
45° ve 90° - 5 ayrı pozisyonda kullanılabilir



- * Gesichert gegen Herausfallen durch Arretierung
Secured against falling down with adjustment lock
Assuré contre tomber par un blocage
Takımlar aparat içinde pozisyonlarda kilitlenerek düşmesi engellenir



- * Klemmung über Rollenlager am Bund ohne Kontakt des Kegels
Clamping with sliding-contact bearings at the flange, no contact with cone
Serrage sur le roulement à galets à l'embase sans contact du cône
Koniğe temas etmeden dış çaptan bilyalar sayesinde sıkıştırılabilir

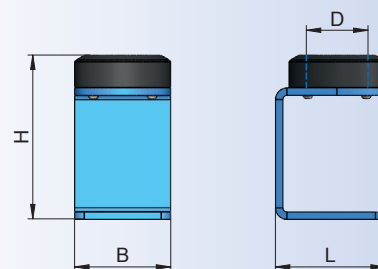
Schnellmontageblock aus Stahl mit Rollenlager

Quick-change mounting assembly block steel, with roller bearings

Bloc de montage rapide de l'acier avec roulements a roulex

Bilyalı çelik montaj aparatı

Bestell-Nr. Order Nr. Référence Sipariş Nr.	Abmessung Size Dimension Cinsi	D	L	H	B	Euro
706.30	BT 30	46	111	165	88	
706.32	HSK 32 - EPS 32	32	85	120	74	
706.40	HSK 40 - EPS 40	40	85	120	74	
706.50	SK 30 - HSK 50 - EPS 50	50	111	165	88	
706.50.1	SK 50	97,5	160	209	144	
706.63	SK 40 - BT 40- HSK 63 - EPS 63	63	114	170	100	
706.80	HSK 80 - EPS 80	80	130	175	122	
706.100	HSK 100 - BT 50	100	160	209	144	





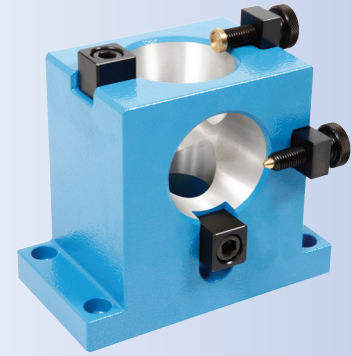
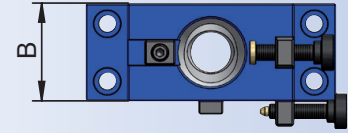
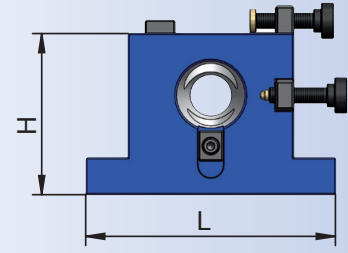
Montageblock aus Aluminium

Tightening fixtures Aluminium

Bloc de montage en aluminium

Montaj aparatı alüminyum

Bestell-Nr. Order Nr. Référence Sipariş Nr.	Abmessung Size Dimension Cinsi	L	H	B	Euro
700.30	SK 30	127	75	47	
700.40	SK 40	160	105	62	
700.50	SK 50	180	155	99	



NC - Bohrfutter mit MK Schaft für Rechts - und Linkslauf MK

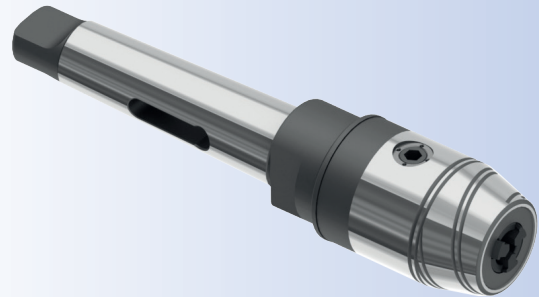
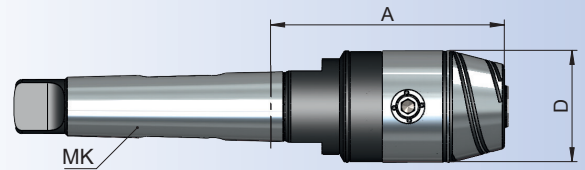
NC - Drill chucks with MK shaft for left and right rotation MK

Mandrin de perçage CNC avec cône morse pour rotation gauche-droite MK

MK shaftlı NC tipi mandren malafası komple sağ ve sol dönüşlü MK



Bestell-Nr. Order Nr. Référence Sipariş Nr.	MK	Spannbereich Capacity Capacité Kapasite		Euro
		A	D	
082.15.08.75	2	0,5 - 8	75	36
082.15.13.105	2	1,0 - 13	105	50
082.15.16.110	2	3,0 - 16	110	57
083.15.08.75	3	0,5 - 8	75	36
083.15.13.100	3	1,0 - 13	100	50
083.15.16.105	3	3,0 - 16	105	57
084.15.13.104	4	1,0 - 13	104	50
084.15.16.109	4	3,0 - 16	109	57



Zubehör / Accessories / Accessoires / Yedekler



10.55-10.57

Ersatzteile
Spare Parts
Pièce de rechange
Yedek parçalar



10.49

Spannschlüssel
Wrench
Clé de serrage
Sikma anahtar



11.06

Tischwerkzeuggestell



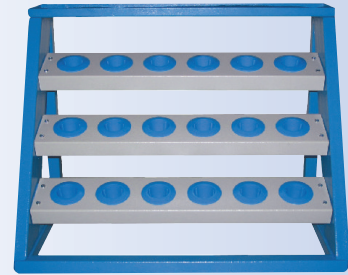
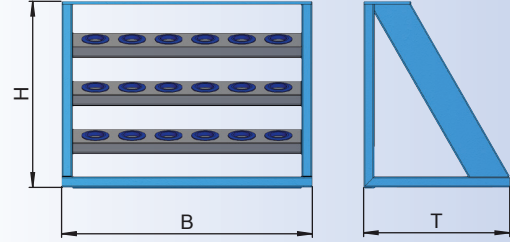
Verschweißte, lackierte Stahlblechkonstruktion
Werkzeugaufnahmen mit Kunststoffeinsätzen

Benchtop tool shelf, made of welded sheet steel,
with plastic tool holders

Support de table pour outils
Fabrication soudée, vernie en tôle d'acier
Insert d'outil en plastique

Masa üstü takım sehpası, takım tutucu yeri plastik

Bestell-Nr. Order Nr. Référence Sipariş Nr.	Abmessung Size Dimension Cinsi	Anzahl Einsätze Inserts Takım Adedi	B	T	H	Euro	
793.30	SK 30	21	700	400	500		
793.40	SK 40	18	700	400	500		
793.50	SK 50	15	700	400	500		
794.16	VDI 16	21	700	400	500		
794.20	VDI 20	21	700	400	500		
794.25	VDI 25	21	700	400	500		
794.30	VDI 30	21	700	400	500		
794.40	VDI 40	18	700	400	500		
794.50	VDI 50	15	700	400	500		
795.32	HSK 32	21	700	400	500		
795.40	HSK 40	21	700	400	500		
795.50	HSK 50	21	700	400	500		
795.63	HSK 63	18	700	400	500		
795.80	HSK 80	15	700	400	500		
795.100	HSK 100	15	700	400	500		
new	796.63	EPS 63	18	700	400	500	





Transport - und Werkzeugwagen

Verschweißte, lackierte Stahlblechkonstruktion
2 Bockrollen und 2 Lenkrollen mit feststelter
Werkzeugaufnahmen mit Kunststoffeinsätzen

Benchtop tool shelf, made of welded sheet steel,
2 Steering castors and 2 fixed castors with
locking device, plastic tool holders

Support de table pour outils
Fabrication soudée, vernie en tôle d'acier
2 pieds fixes, 2 pieds de guidage avec linguet
Insert d'outil en plastique

Taşınabilir çift taraflı takım arabası, dönerli, kilitlenen
ve sabit tekerlekli, takım tutucu yeri plastik

Bestell-Nr. Order Nr. Référence Sipariş Nr.	Abmessung Size Dimension Cinsi	Anzahl Einsätze Inserts Takım Adedi	B	T	H	Euro
790.30	SK 30	70	700	600	1260	
790.40	SK 40	60	700	600	1260	
790.50	SK 50	50	700	600	1260	
791.16	VDI 16	70	700	600	1260	
791.20	VDI 20	70	700	600	1260	
791.25	VDI 25	70	700	600	1260	
791.30	VDI 30	70	700	600	1260	
791.40	VDI 40	60	700	600	1260	
791.50	VDI 50	50	700	600	1260	
792.32	HSK32	70	700	600	1260	
792.40	HSK40	70	700	600	1260	
792.50	HSK50	70	700	600	1260	
792.63	HSK63	60	700	600	1260	
792.80	HSK80	50	700	600	1260	
792.100	HSK100	50	700	600	1260	
new	793.63	EPS 63	700	600	1260	

