

# PRODUCT NEWS

PN-E-007

## SERIES EXPANSION

TEZ-H type (insert)  
TEZDF type (holder)  
TEZD-M type (holder)

 **DIJET**<sup>®</sup>

*Indexable EZ Drill*

# TEZD type

- TEZDF-MS type (L/D=3) :  $\Phi 13.5 \sim \Phi 32.5$
- TEZDF-ML type (L/D=5) :  $\Phi 13.5 \sim \Phi 32.5$
- TEZDF-XL type (L/D=8) :  $\Phi 13.5 \sim \Phi 32.5$
- TEZD-M type (Modular Head) :  $\Phi 13.5 \sim \Phi 32.5$



“Indexable drill TEZD type” achieves easy assembly and high cutting performance.



**NEW**



TEZDF / TEZD-M type

**NEW**



TEZ-H type



**DIJET GmbH**

[www.dijet.de](http://www.dijet.de)

**Feature 1** **Drill Body Variations**

**L/D=3**  
Φ13.5 - 32.5



**L/D=5**  
Φ13.5 - 32.5



**L/D=8**  
Φ13.5 - 32.5



**Modular Head**  
**L/D=2D**  
Φ13.5 - 32.5



carbide modular head holder MSN type

**NEW**

**TEZD-M (Modular head) type**

The combination of a modular head and a carbide shank holder enables stable drilling even with a long overhang.



**NEW**

**TEZDF type**

A high-rigidity flanged shank body enables stable and accurate hole making.



Conventional model



Hole Dia : Φ17.013

TEZDF-ML type



Hole Dia : Φ17.005

**P**

dia : Φ17  
tool : TEZD1700S20F-ML  
material : SS400  
Vc : 75 m/min  
f : 0.15 mm/rev

**Improved chip formation and hole accuracy!**

## Feature 2 Available in three insert types

### TEZ type - General purpose

Φ13.5 - 32.5

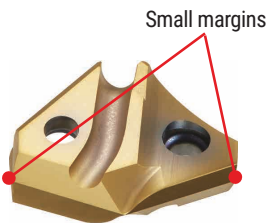


- PVD coating grade "JC8050"
- Suitable for **all types of materials**.

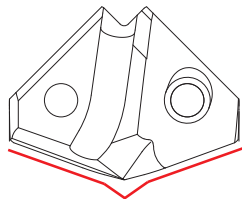


### TEZ-S type - For Stainless Steel, Titanium Alloy

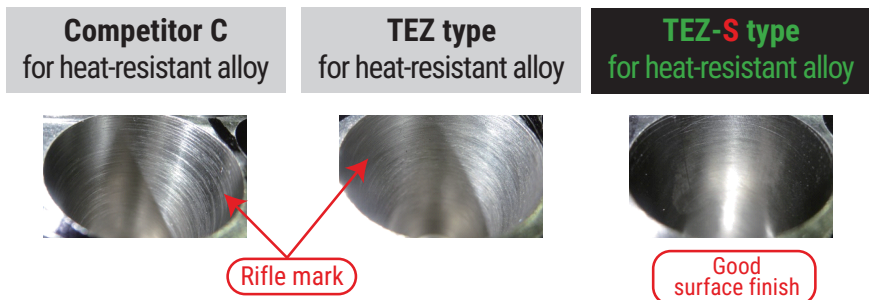
Φ13.5 - 20.5



- PVD coating grade "JC7515" (for high thermal crack resistance & oxidation resistance)
- "Small margins" reduce cutting heat generated.
- "Improved Centripetal centering" geometry for Smooth drilling and Good chip evacuation.

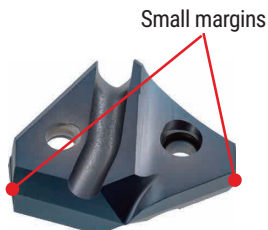


Centripetal centering geometry

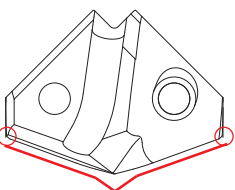


### TEZ-H type - For Mold Steel, Hardened Steel (up to 52 HRC)

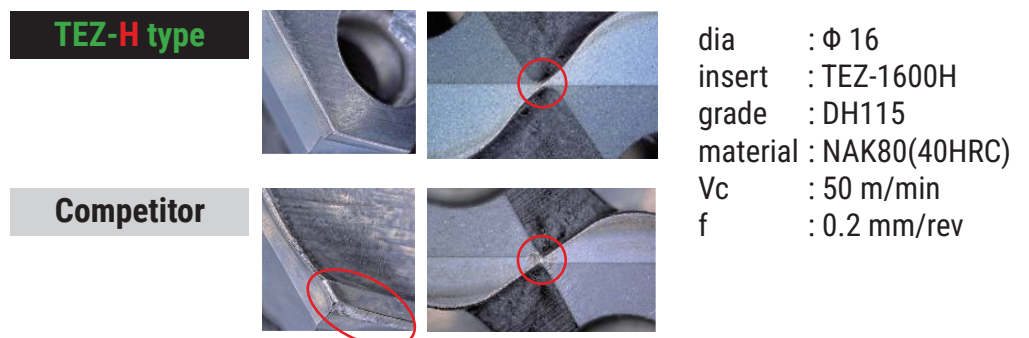
Φ13.5 - 20.5



- PVD coating grade "DH115" (for high hardness & heat resistance)
- "Small margins" reduce cutting heat generated.
- "Optimized Tip and Corner geometry" specially for hardened materials.
- "Strong Drill Corner Edge" prevents chipping.



Optimized Tip and Corner geometry specially for hardened materials



## PROCEDURE FOR MOUNTING INSERT

### 1. Removing used insert

Make sure to remove any chips or dust off the tip before removing the used insert. Remove used insert and clean pocket using a brush or air blowing before loading new insert.



### 2. Loading new insert

Place new insert in pocket, lightly tighten two screws while pressing the top of the insert (see photo). After confirming there is no gap between the drill and insert, tighten the insert screw, starting with the same screw you first lightly tightened, to the recommended torque while still pressing the top of the insert.



**⚠ Note:**

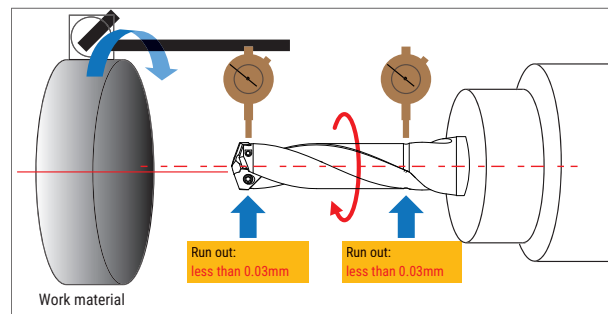
Clamp screw need to be changed out after replacing the insert approximately 10 times or if you see any issues with the screws.



Clamp screw

## IF USING LATHE MACHINE

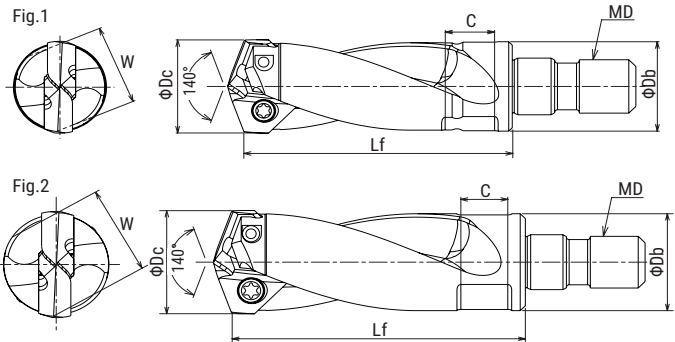
1. Check run out of insert O.D. within 0.03mm (off set of center 0.015mm) and flute O.D. of shank side within approx. 0.03mm.
2. Due to large thrust of cutting forces, make sure drill is fully seated in holder.
3. Reduce the cutting speed and feed rate by 20% from standard cutting conditions.



NEW

**TEZD-M**  
TYPE

**Modular Type**



NEW

Cat.No.	Stock	Dc		Dimensions (mm)					Fig.	Parts	
		Min.	Max.	Lf	Db	MD	C	W		Screw	Wrench
TEZD1400-M8	●	13.5	14.5	38	13.4	M8	8	12	1	DSW-2045H	A-07
TEZD1500-M8	●	14.6	15.5	40.5	14	M8	8	12	2		
TEZD1600-M8	●	15.6	16.5	43	15	M8	8	12	2	TSW-2556H	A-08
TEZD1700-M8	●	16.6	17.5	45.5	16	M8	8	12	2		
TEZD1800-M8	●	17.6	18.5	48	17	M8	8	12	2	TSW-2567H	A-08
TEZD1900-M10	●	18.6	19.5	50.5	18	M10	9	14	2		
TEZD2000-M10	●	19.6	20.5	53	19	M10	9	14	2	DSW-307H	A-10
TEZD2100-M10	●	20.6	21.5	55.5	20	M10	9	14	2		
TEZD2200-M10	●	21.6	22.5	58	21	M10	9	14	2	DSW-309H	A-10
TEZD2300-M10	●	22.6	23.5	60.5	22	M10	9	14	2		
TEZD2400-M12	●	23.6	24.5	63	23	M12	11	19	2	TSW-3510H	A-15
TEZD2500-M12	●	24.6	25.5	65.5	24	M12	11	19	2		
TEZD2600-M12	●	25.6	26.5	68	25	M12	11	19	2	TSW-3512H	A-15
TEZD2700-M12	●	26.6	27.5	70.5	26	M12	11	19	2		
TEZD2800-M12	●	27.6	28.5	73	27	M12	11	19	2	TSW-3512H	A-15
TEZD2900-M16	●	28.6	29.5	75.5	28	M16	12	22	2		
TEZD3000-M16	●	29.6	30.5	78	29	M16	12	22	2	TSW-3512H	A-15
TEZD3100-M16	●	30.6	31.5	80.5	30	M16	12	22	2		
TEZD3200-M16	●	31.6	32.5	83	31	M16	14	26	2		

Note) All cutters are supplied without inserts or wrenches.

Clamp screw	Torque(N·m)
DSW-2045H	0.9
TSW-2556H	1.2
TSW-2567H	1.2
DSW-307H	2.1
DSW-309H	2.1
TSW-3510H	3.0
TSW-3512H	3.0

● : Standard stock items

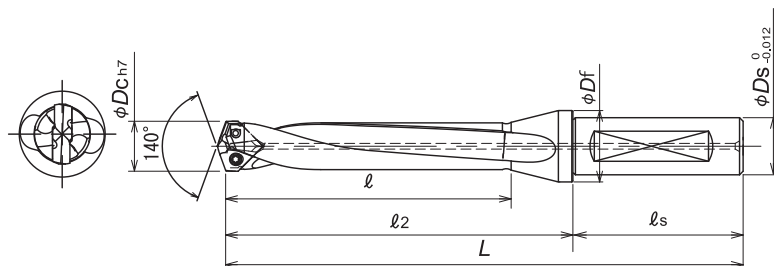
○ : Stock in Japan



NEW

**TEZDF-MS**  
TYPE

Holder



NEW

Cat.No.	Stock	Dc		Dimensions (mm)						Parts	
		Min.	Max.	ℓ	ℓ2	ℓs	L	Ds	Df	Screw	Wrench
TEZD1400S16F-MS	●	13.5	14.5	51	65	48	113	16	20	DSW-2045H	A-07
TEZD1500S20F-MS	●	14.6	15.5	54	69	50	119	20	24.9		
TEZD1600S20F-MS	●	15.6	16.5	58	74	50	124	20	24.9	TSW-2556H	A-08
TEZD1700S20F-MS	●	16.6	17.5	61	78	50	128	20	24.9		
TEZD1800S20F-MS	●	17.6	18.5	65	83	50	133	20	24.9	TSW-2567H	A-08
TEZD1900S25F-MS	●	18.6	19.5	68	87	56	143	25	32		
TEZD2000S25F-MS	●	19.6	20.5	72	92	56	148	25	32	DSW-307H	A-10
TEZD2100S25F-MS	●	20.6	21.5	75	96	56	152	25	32		
TEZD2200S25F-MS	●	21.6	22.5	79	101	56	157	25	32	DSW-309H	A-10
TEZD2300S25F-MS	●	22.6	23.5	82	105	56	161	25	32		
TEZD2400S32F-MS	●	23.6	24.5	86	110	60	170	32	41.9	TSW-3510H	A-15
TEZD2500S32F-MS	●	24.6	25.5	89	114	60	174	32	41.9		
TEZD2600S32F-MS	●	25.6	26.5	93	119	60	179	32	41.9	TSW-3512H	A-15
TEZD2700S32F-MS	●	26.6	27.5	96	123	60	183	32	41.9		
TEZD2800S32F-MS	●	27.6	28.5	100	128	60	188	32	41.9	TSW-3512H	A-15
TEZD2900S32F-MS	●	28.6	29.5	103	132	60	192	32	41.9		
TEZD3000S32F-MS	●	29.6	30.5	107	137	60	197	32	41.9	TSW-3512H	A-15
TEZD3100S32F-MS	●	30.6	31.5	110	141	60	201	32	41.9		
TEZD3200S32F-MS	●	31.6	32.5	114	146	60	206	32	41.9		

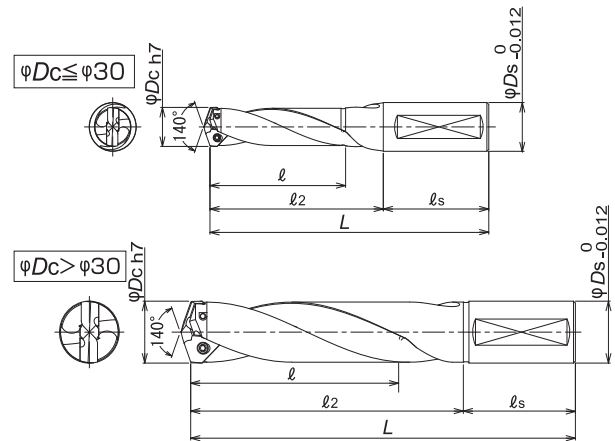
Note) All cutters are supplied without inserts or wrenches.

Clamp screw	Torque(N·m)
DSW-2045H	0.9
TSW-2556H	1.2
TSW-2567H	1.2
DSW-307H	2.1
DSW-309H	2.1
TSW-3510H	3.0
TSW-3512H	3.0



# TEZD-MS TYPE

## Holder



Cat.No.	Stock	Dc		Dimensions (mm)					Parts	
		Min.	Max.	ℓ	ℓ2	ℓs	L	Ds	Screw	Wrench
TEZD1400S16-MS	※	13.5	14.5	51	65	48	113	16	DSW-2045H	A-07
TEZD1500S20-MS	※	14.6	15.5	54	69	50	119	20		
TEZD1600S20-MS	※	15.6	16.5	58	74	50	124	20	TSW-2556H	A-08
TEZD1700S20-MS	※	16.6	17.5	61	78	50	128	20		
TEZD1800S20-MS	※	17.6	18.5	65	83	50	133	20	TSW-2567H	A-08
TEZD1900S25-MS	※	18.6	19.5	68	87	56	143	25		
TEZD2000S25-MS	※	19.6	20.5	72	92	56	148	25	DSW-307H	A-10
TEZD2100S25-MS	※	20.6	21.5	75	96	56	152	25		
TEZD2200S25-MS	※	21.6	22.5	79	101	56	157	25	DSW-309H	A-10
TEZD2300S25-MS	※	22.6	23.5	82	105	56	161	25		
TEZD2400S32-MS	※	23.6	24.5	86	110	60	170	32	TSW-3510H	A-15
TEZD2500S32-MS	※	24.6	25.5	89	114	60	174	32		
TEZD2600S32-MS	※	25.6	26.5	93	119	60	179	32	TSW-3512H	A-15
TEZD2700S32-MS	※	26.6	27.5	96	123	60	183	32		
TEZD2800S32-MS	※	27.6	28.5	100	128	60	188	32	TSW-3512H	A-15
TEZD2900S32-MS	※	28.6	29.5	103	132	60	192	32		
TEZD3000S32-MS	※	29.6	30.5	107	137	60	197	32	TSW-3512H	A-15
TEZD3100S32-MS	※	30.6	31.5	110	141	60	201	32		
TEZD3200S32-MS	※	31.6	32.5	114	146	60	206	32		

Note) All cutters are supplied without inserts or wrenches.

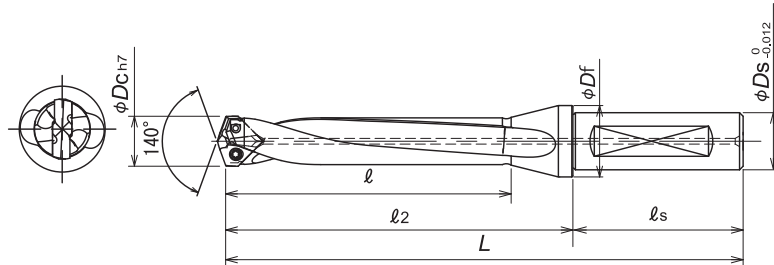
Clamp screw	Torque(N·m)
DSW-2045H	0.9
TSW-2556H	1.2
TSW-2567H	1.2
DSW-307H	2.1
DSW-309H	2.1
TSW-3510H	3.0
TSW-3512H	3.0



NEW

**TEZDF-ML**  
TYPE

Holder



NEW

Cat.No.	Stock	Dc		Dimensions (mm)						Parts	
		Min.	Max.	ℓ	ℓ2	ℓs	L	Ds	Df	Screw	Wrench
TEZD1400S16F-ML	●	13.5	14.5	80	97	48	145	16	20	DSW-2045H	A-07
TEZD1500S20F-ML	●	14.6	15.5	85	103	50	153	20	24.9		
TEZD1600S20F-ML	●	15.6	16.5	91	110	50	160	20	24.9	TSW-2556H	A-08
TEZD1700S20F-ML	●	16.6	17.5	96	117	50	167	20	24.9		
TEZD1800S20F-ML	●	17.6	18.5	102	123	50	173	20	24.9	TSW-2567H	A-08
TEZD1900S25F-ML	●	18.6	19.5	107	130	56	186	25	32		
TEZD2000S25F-ML	●	19.6	20.5	113	137	56	193	25	32	DSW-307H	A-10
TEZD2100S25F-ML	●	20.6	21.5	118	143	56	199	25	32		
TEZD2200S25F-ML	●	21.6	22.5	124	150	56	206	25	32	DSW-309H	A-10
TEZD2300S25F-ML	●	22.6	23.5	129	157	56	213	25	32		
TEZD2400S32F-ML	●	23.6	24.5	135	164	60	224	32	41.9	TSW-3510H	A-15
TEZD2500S32F-ML	●	24.6	25.5	140	170	60	230	32	41.9		
TEZD2600S32F-ML	●	25.6	26.5	146	177	60	237	32	41.9	TSW-3512H	A-15
TEZD2700S32F-ML	●	26.6	27.5	151	184	60	244	32	41.9		
TEZD2800S32F-ML	●	27.6	28.5	157	190	60	250	32	41.9	TSW-3512H	A-15
TEZD2900S32F-ML	●	28.6	29.5	162	197	60	257	32	41.9		
TEZD3000S32F-ML	●	29.6	30.5	168	204	60	264	32	41.9	TSW-3512H	A-15
TEZD3100S32F-ML	●	30.6	31.5	173	210	60	270	32	41.9		
TEZD3200S32F-ML	●	31.6	32.5	179	217	60	277	32	41.9		

Note) All cutters are supplied without inserts or wrenches.

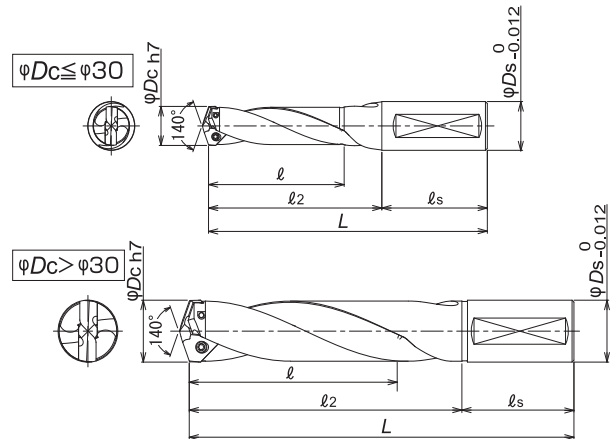
Clamp screw	Torque(N·m)
DSW-2045H	0.9
TSW-2556H	1.2
TSW-2567H	1.2
DSW-307H	2.1
DSW-309H	2.1
TSW-3510H	3.0
TSW-3512H	3.0





# TEZD-ML TYPE

## Holder



Cat.No.	Stock	Dc		Dimensions (mm)					Parts	
		Min.	Max.	ℓ	ℓ <sub>2</sub>	ℓ <sub>s</sub>	L	D <sub>s</sub>	Screw	Wrench
TEZD1400S16-ML	※	13.5	14.5	80	97	48	145	16	DSW-2045H	A-07
TEZD1500S20-ML	※	14.6	15.5	85	103	50	153	20		
TEZD1600S20-ML	※	15.6	16.5	91	110	50	160	20	TSW-2556H	A-08
TEZD1700S20-ML	※	16.6	17.5	96	117	50	167	20		
TEZD1800S20-ML	※	17.6	18.5	102	123	50	173	20	TSW-2567H	A-08
TEZD1900S25-ML	※	18.6	19.5	107	130	56	186	25		
TEZD2000S25-ML	※	19.6	20.5	113	137	56	193	25	DSW-307H	A-10
TEZD2100S25-ML	※	20.6	21.5	118	143	56	199	25		
TEZD2200S25-ML	※	21.6	22.5	124	150	56	206	25	DSW-309H	A-10
TEZD2300S25-ML	※	22.6	23.5	129	157	56	213	25		
TEZD2400S32-ML	※	23.6	24.5	135	164	60	224	32	TSW-3510H	A-15
TEZD2500S32-ML	※	24.6	25.5	140	170	60	230	32		
TEZD2600S32-ML	※	25.6	26.5	146	177	60	237	32	TSW-3512H	A-15
TEZD2700S32-ML	※	26.6	27.5	151	184	60	244	32		
TEZD2800S32-ML	※	27.6	28.5	157	190	60	250	32	TSW-3512H	A-15
TEZD2900S32-ML	※	28.6	29.5	162	197	60	257	32		
TEZD3000S32-ML	※	29.6	30.5	168	204	60	264	32	TSW-3512H	A-15
TEZD3100S32-ML	※	30.6	31.5	173	210	60	270	32		
TEZD3200S32-ML	※	31.6	32.5	179	217	60	277	32		

Note) All cutters are supplied without inserts or wrenches.

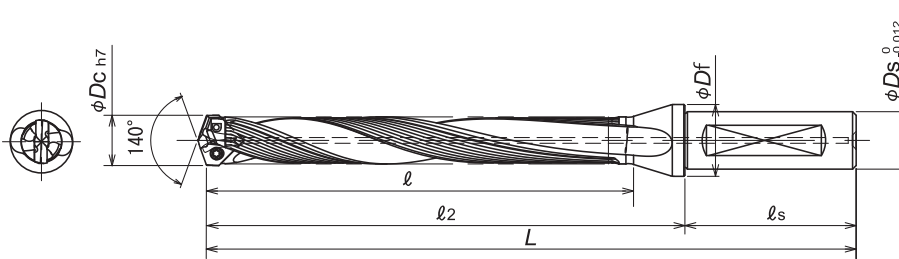
Clamp screw	Torque(N·m)
DSW-2045H	0.9
TSW-2556H	1.2
TSW-2567H	1.2
DSW-307H	2.1
DSW-309H	2.1
TSW-3510H	3.0
TSW-3512H	3.0



NEW

**TEZDF-XL**  
TYPE

Holder



NEW

Cat.No.	Stock	Dc		Dimensions (mm)						Parts	
		Min.	Max.	ℓ	ℓ2	ℓs	L	Ds	Df	Screw	Wrench
TEZD1400S16F-XL	●	13.5	14.5	119	133	48	181	16	20	DSW-2045H	A-07
TEZD1500S20F-XL	●	14.6	15.5	128	143	50	193	20	24.9		
TEZD1600S20F-XL	●	15.6	16.5	136	152	50	202	20	24.9	TSW-2556H	A-08
TEZD1700S20F-XL	●	16.6	17.5	145	162	50	212	20	24.9		
TEZD1800S20F-XL	●	17.6	18.5	153	171	50	221	20	24.9	TSW-2567H	A-08
TEZD1900S25F-XL	●	18.6	19.5	162	181	56	237	25	32		
TEZD2000S25F-XL	●	19.6	20.5	170	190	56	246	25	32	DSW-307H	A-10
TEZD2100S25F-XL	●	20.6	21.5	179	200	56	256	25	32		
TEZD2200S25F-XL	●	21.6	22.5	187	209	56	265	25	32	DSW-309H	A-10
TEZD2300S25F-XL	●	22.6	23.5	196	219	56	275	25	32		
TEZD2400S32F-XL	●	23.6	24.5	204	228	60	288	32	41.9	TSW-3510H	A-15
TEZD2500S32F-XL	●	24.6	25.5	213	238	60	298	32	41.9		
TEZD2600S32F-XL	●	25.6	26.5	221	247	60	307	32	41.9	TSW-3512H	A-15
TEZD2700S32F-XL	●	26.6	27.5	230	257	60	317	32	41.9		
TEZD2800S32F-XL	●	27.6	28.5	238	266	60	326	32	41.9		
TEZD2900S32F-XL	●	28.6	29.5	247	276	60	336	32	41.9		
TEZD3000S32F-XL	●	29.6	30.5	255	285	60	345	32	41.9		
TEZD3100S32F-XL	●	30.6	31.5	248	295	60	355	32	41.9		
TEZD3200S32F-XL	●	31.6	32.5	256	304	60	364	32	41.9		

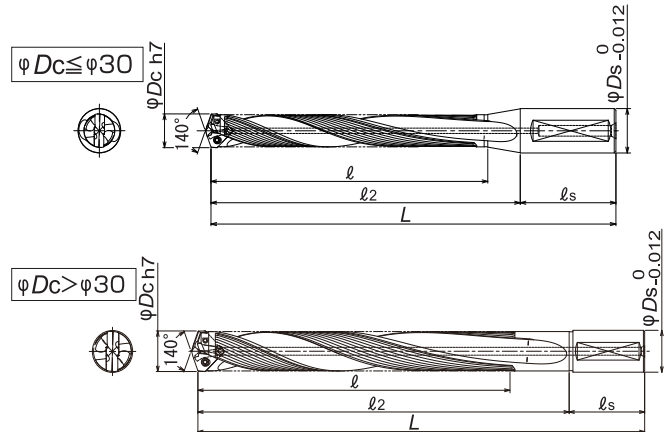
Note) All cutters are supplied without inserts or wrenches.

Clamp screw	Torque(N·m)
DSW-2045H	0.9
TSW-2556H	1.2
TSW-2567H	1.2
DSW-307H	2.1
DSW-309H	2.1
TSW-3510H	3.0
TSW-3512H	3.0



# TEZD-XL TYPE

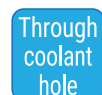
## Holder



Cat.No.	Stock	Dc		Dimensions (mm)					Parts	
		Min.	Max.	ℓ	ℓ <sub>2</sub>	ℓ <sub>s</sub>	L	D <sub>s</sub>	Screw	Wrench
TEZD1400S16-XL	※	13.5	14.5	119	133	48	181	16	DSW-2045H	A-07
TEZD1500S20-XL	※	14.6	15.5	128	143	50	193	20		
TEZD1600S20-XL	※	15.6	16.5	136	152	50	202	20	TSW-2556H	A-08
TEZD1700S20-XL	※	16.6	17.5	145	162	50	212	20		
TEZD1800S20-XL	※	17.6	18.5	153	171	50	221	20	TSW-2567H	A-08
TEZD1900S25-XL	※	18.6	19.5	162	181	56	237	25		
TEZD2000S25-XL	※	19.6	20.5	170	190	56	246	25	DSW-307H	A-10
TEZD2100S25-XL	※	20.6	21.5	179	200	56	256	25		
TEZD2200S25-XL	※	21.6	22.5	187	209	56	265	25	DSW-309H	A-10
TEZD2300S25-XL	※	22.6	23.5	196	219	56	275	25		
TEZD2400S32-XL	※	23.6	24.5	204	228	60	288	32	TSW-3510H	A-15
TEZD2500S32-XL	※	24.6	25.5	213	238	60	298	32		
TEZD2600S32-XL	※	25.6	26.5	221	247	60	307	32	TSW-3512H	A-15
TEZD2700S32-XL	※	26.6	27.5	230	257	60	317	32		
TEZD2800S32-XL	※	27.6	28.5	238	266	60	326	32	TSW-3512H	A-15
TEZD2900S32-XL	※	28.6	29.5	247	276	60	336	32		
TEZD3000S32-XL	※	29.6	30.5	255	285	60	345	32	TSW-3512H	A-15
TEZD3100S32-XL	※	30.6	31.5	248	295	60	355	32		
TEZD3200S32-XL	※	31.6	32.5	256	304	60	364	32		

Note) All cutters are supplied without inserts or wrenches.

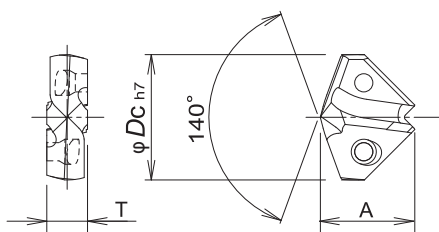
Clamp screw	Torque(N·m)
DSW-2045H	0.9
TSW-2556H	1.2
TSW-2567H	1.2
DSW-307H	2.1
DSW-309H	2.1
TSW-3510H	3.0
TSW-3512H	3.0



**TEZ**  
TYPE

**Insert - Grade JC8050**

● Suitable for General Steel



Dc	Cat.No.	Stk	A	T	Holder
13.5	TEZ1350	●	11.4	4.5	TEZD14*
13.6	TEZ1360	●			
13.7	TEZ1370	●			
13.8	TEZ1380	●			
13.9	TEZ1390	●			
14.0	TEZ1400	●			
14.1	TEZ1410	●			
14.2	TEZ1420	●			
14.3	TEZ1430	●			
14.4	TEZ1440	●			
14.5	TEZ1450	●	11.5	4.8	TEZD15*
14.6	TEZ1460	●			
14.7	TEZ1470	●			
14.8	TEZ1480	●			
14.9	TEZ1490	●			
15.0	TEZ1500	●			
15.1	TEZ1510	●			
15.2	TEZ1520	●			
15.3	TEZ1530	●			
15.4	TEZ1540	●			
15.5	TEZ1550	●	12.4	5.0	TEZD16*
15.6	TEZ1560	●			
15.7	TEZ1570	●			
15.8	TEZ1580	●			
15.9	TEZ1590	●			
16.0	TEZ1600	●			
16.1	TEZ1610	●			
16.2	TEZ1620	●			
16.3	TEZ1630	●			
16.4	TEZ1640	●			
16.5	TEZ1650	●	13.2	5.5	TEZD17*
16.6	TEZ1660	●			
16.7	TEZ1670	●			
16.8	TEZ1680	●			
16.9	TEZ1690	●			
17.0	TEZ1700	●			
17.1	TEZ1710	●			
17.2	TEZ1720	●			
17.3	TEZ1730	●			
17.4	TEZ1740	●			
17.5	TEZ1750	●	13.5	5.8	TEZD18*
17.6	TEZ1760	●			
17.7	TEZ1770	●			
17.8	TEZ1780	●			
17.9	TEZ1790	●			
18.0	TEZ1800	●			
18.1	TEZ1810	●			
18.2	TEZ1820	●			

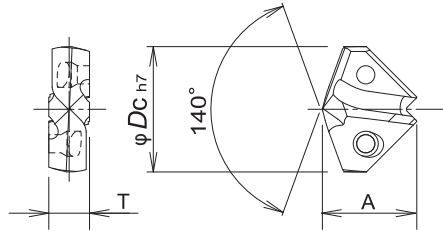
Dc	Cat.No.	Stk	A	T	Holder
18.3	TEZ1830	●	13.5	5.8	TEZD18*
18.4	TEZ1840	●			
18.5	TEZ1850	●			
18.6	TEZ1860	●			
18.7	TEZ1870	●			
18.8	TEZ1880	●			
18.9	TEZ1890	●			
19.0	TEZ1900	●			
19.1	TEZ1910	●			
19.2	TEZ1920	●			
19.3	TEZ1930	●	15.1	6.5	TEZD20*
19.4	TEZ1940	●			
19.5	TEZ1950	●			
19.6	TEZ1960	●			
19.7	TEZ1970	●			
19.8	TEZ1980	●			
19.9	TEZ1990	●			
20.0	TEZ2000	●			
20.1	TEZ2010	●			
20.2	TEZ2020	●			
20.3	TEZ2030	●			
20.4	TEZ2040	●			
20.5	TEZ2050	●			
20.6	TEZ2060	●			
20.7	TEZ2070	●			
20.8	TEZ2080	●			
20.9	TEZ2090	●			
21.0	TEZ2100	●			
21.1	TEZ2110	●	16.6	7.5	TEZD22*
21.2	TEZ2120	●			
21.3	TEZ2130	●			
21.4	TEZ2140	●			
21.5	TEZ2150	●			
21.6	TEZ2160	●			
21.7	TEZ2170	●			
21.8	TEZ2180	●			
21.9	TEZ2190	●			
22.0	TEZ2200	●			
22.1	TEZ2210	●			
22.2	TEZ2220	●			
22.3	TEZ2230	●			
22.4	TEZ2240	●			
22.5	TEZ2250	●			
22.6	TEZ2260	●			
22.7	TEZ2270	●			
22.8	TEZ2280	●			
22.9	TEZ2290	●			
23.0	TEZ2300	●			



**TEZ**  
TYPE

**Insert - Grade JC8050**

● Suitable for General Steel



Dc	Cat.No.	Stk	A	T	Holder
23.1	TEZ2310	●	17.4	7.5	TEZD23*
23.2	TEZ2320	●			
23.3	TEZ2330	●			
23.4	TEZ2340	●			
23.5	TEZ2350	●			
23.6	TEZ2360	●	18.2	8.0	TEZD24*
23.7	TEZ2370	●			
23.8	TEZ2380	●			
23.9	TEZ2390	●			
24.0	TEZ2400	●			
24.1	TEZ2410	●			
24.2	TEZ2420	●			
24.3	TEZ2430	●			
24.4	TEZ2440	●	19.1	8.0	TEZD25*
24.5	TEZ2450	●			
24.6	TEZ2460	●			
24.7	TEZ2470	●			
24.8	TEZ2480	●			
24.9	TEZ2490	●			
25.0	TEZ2500	●			
25.1	TEZ2510	●			
25.2	TEZ2520	●			
25.3	TEZ2530	●			
25.4	TEZ2540	●	19.7	8.5	TEZD26*
25.5	TEZ2550	●			
25.6	TEZ2560	●			
25.7	TEZ2570	●			
25.8	TEZ2580	●			
25.9	TEZ2590	●			
26.0	TEZ2600	●			
26.1	TEZ2610	●			
26.2	TEZ2620	●			
26.3	TEZ2630	●			
26.4	TEZ2640	●	20.4	8.5	TEZD27*
26.5	TEZ2650	●			
26.6	TEZ2660	●			
26.7	TEZ2670	●			
26.8	TEZ2680	●			
26.9	TEZ2690	●			
27.0	TEZ2700	●			
27.1	TEZ2710	●			
27.2	TEZ2720	●			
27.3	TEZ2730	●			
27.4	TEZ2740	●	21.2	9.0	TEZD28*
27.5	TEZ2750	●			
27.6	TEZ2760	●			
27.7	TEZ2770	●			
27.8	TEZ2780	●			

Dc	Cat.No.	Stk	A	T	Holder			
27.9	TEZ2790	●	21.2	9.0	TEZD28*			
28.0	TEZ2800	●						
28.1	TEZ2810	●						
28.2	TEZ2820	●						
28.3	TEZ2830	●						
28.4	TEZ2840	●	22.1	9.0	TEZD29*			
28.5	TEZ2850	●						
28.6	TEZ2860	●						
28.7	TEZ2870	●						
28.8	TEZ2880	●						
28.9	TEZ2890	●						
29.0	TEZ2900	●						
29.1	TEZ2910	●						
29.2	TEZ2920	●	22.5	9.5	TEZD30*			
29.3	TEZ2930	●						
29.4	TEZ2940	●						
29.5	TEZ2950	●						
29.6	TEZ2960	●						
29.7	TEZ2970	●						
29.8	TEZ2980	●						
29.9	TEZ2990	●						
30.0	TEZ3000	●				23.4	10	TEZD31*
30.1	TEZ3010	●						
30.2	TEZ3020	●						
30.3	TEZ3030	●						
30.4	TEZ3040	●						
30.5	TEZ3050	●						
30.6	TEZ3060	●						
30.7	TEZ3070	●						
30.8	TEZ3080	●						
30.9	TEZ3090	●	24.3	10	TEZD32*			
31.0	TEZ3100	●						
31.1	TEZ3110	●						
31.2	TEZ3120	●						
31.3	TEZ3130	●						
31.4	TEZ3140	●						
31.5	TEZ3150	●						
31.6	TEZ3160	●						
31.7	TEZ3170	●						
31.8	TEZ3180	●						
31.9	TEZ3190	●						
32.0	TEZ3200	●						
32.1	TEZ3210	●						
32.2	TEZ3220	●						
32.3	TEZ3230	●						
32.4	TEZ3240	●						
32.5	TEZ3250	●						

Note) 1 insert per case

● : Standard stock items

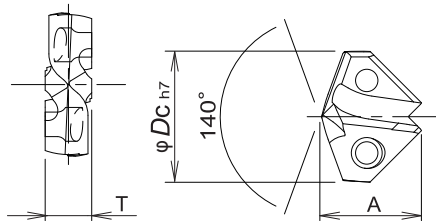
○ : Stock in Japan



## TEZ-S TYPE

### Insert - Grade JC7515

● for Stainless steel, Titanium alloy



Dc	Cat.No.	Stk	A	T	Holder
13.5	TEZ1350S	●	11.4	4.5	TEZD14*
13.6	TEZ1360S	●			
13.7	TEZ1370S	●			
13.8	TEZ1380S	●			
13.9	TEZ1390S	●			
14.0	TEZ1400S	●			
14.1	TEZ1410S	●			
14.2	TEZ1420S	●			
14.3	TEZ1430S	●			
14.4	TEZ1440S	●			
14.5	TEZ1450S	●			
14.6	TEZ1460S	●	11.5	4.8	TEZD15*
14.7	TEZ1470S	●			
14.8	TEZ1480S	●			
14.9	TEZ1490S	●			
15.0	TEZ1500S	●			
15.1	TEZ1510S	●			
15.2	TEZ1520S	●			
15.3	TEZ1530S	●			
15.4	TEZ1540S	●			
15.5	TEZ1550S	●			
15.6	TEZ1560S	●	12.4	5.0	TEZD16*
15.7	TEZ1570S	●			
15.8	TEZ1580S	●			
15.9	TEZ1590S	●			
16.0	TEZ1600S	●			
16.1	TEZ1610S	●			
16.2	TEZ1620S	●			
16.3	TEZ1630S	●			
16.4	TEZ1640S	●			
16.5	TEZ1650S	●			
16.6	TEZ1660S	●	13.2	5.5	TEZD17*
16.7	TEZ1670S	●			
16.8	TEZ1680S	●			
16.9	TEZ1690S	●			
17.0	TEZ1700S	●			
17.1	TEZ1710S	●			
17.2	TEZ1720S	●			
17.3	TEZ1730S	●			
17.4	TEZ1740S	●			
17.5	TEZ1750S	●			
17.6	TEZ1760S	●	13.5	5.8	TEZD18*
17.7	TEZ1770S	●			
17.8	TEZ1780S	●			
17.9	TEZ1790S	●			
18.0	TEZ1800S	●			
18.1	TEZ1810S	●			

Dc	Cat.No.	Stk	A	T	Holder
18.2	TEZ1820S	●	13.5	5.8	TEZD18*
18.3	TEZ1830S	●			
18.4	TEZ1840S	●			
18.5	TEZ1850S	●			
18.6	TEZ1860S	●	14.2	6.0	TEZD19*
18.7	TEZ1870S	●			
18.8	TEZ1880S	●			
18.9	TEZ1890S	●			
19.0	TEZ1900S	●			
19.1	TEZ1910S	●			
19.2	TEZ1920S	●			
19.3	TEZ1930S	●			
19.4	TEZ1940S	●			
19.5	TEZ1950S	●			
19.6	TEZ1960S	●	15.1	6.5	TEZD20*
19.7	TEZ1970S	●			
19.8	TEZ1980S	●			
19.9	TEZ1990S	●			
20.0	TEZ2000S	●			
20.5	TEZ2050S	●			

Note) 1 insert per case

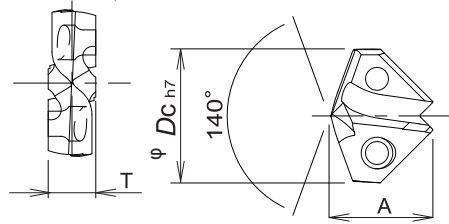
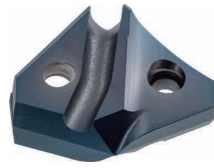


NEW

**TEZ-H**  
TYPE

**Insert - Grade DH115**

● for Mold steel, Hardened steel (up to 52 HRC)



NEW

Dc	Cat.No.	Stk	A	T	Holder
13.5	TEZ1350H	●	11.4	4.5	TEZD14*
14.0	TEZ1400H	●			
14.1	TEZ1410H	●			
14.2	TEZ1420H	●			
14.3	TEZ1430H	●			
14.5	TEZ1450H	●			
15.0	TEZ1500H	●	11.5	4.8	TEZD15*
15.1	TEZ1510H	●			
15.2	TEZ1520H	●			
15.3	TEZ1530H	●			
15.5	TEZ1550H	●	12.4	5.0	TEZD16*
15.8	TEZ1580H	●			
15.9	TEZ1590H	●			
16.0	TEZ1600H	●			
16.1	TEZ1610H	●			
16.2	TEZ1620H	●			
16.3	TEZ1630H	●	13.2	5.5	TEZD17*
16.5	TEZ1650H	●			
17.0	TEZ1700H	●			
17.1	TEZ1710H	●			
17.5	TEZ1750H	●	13.5	5.8	TEZD18*
17.6	TEZ1760H	●			
17.7	TEZ1770H	●			
17.8	TEZ1780H	●			
18.0	TEZ1800H	●			
18.1	TEZ1810H	●			
18.5	TEZ1850H	●			

Dc	Cat.No.	Stk	A	T	Holder
19.0	TEZ1900H	●	14.2	6.0	TEZD19*
19.5	TEZ1950H	●			
19.8	TEZ1980H	●	15.1	6.5	TEZD20*
20.0	TEZ2000H	●			
20.2	TEZ2020H	●			
20.5	TEZ2050H	●			

Note) 1 insert per case

■ Recommended Cutting Conditions

● TEZ type JC8050

Material	Structural Steel , Carbon Steel below 280HB	Alloy Steel 280-350HB	Tool Steel below 255HB
Vc (m/min)	75 - 90	70 - 90	70 - 90
f (mm/rev)	0.30 - 0.35	0.22 - 0.25	0.22 - 0.25

Material	Stainless Steel	Grey Cast Iron	Nodular Cast Iron
Vc (m/min)	45	85 - 110	60 - 90
f (mm/rev)	0.25	0.30 - 0.40	0.15 - 0.28

● TEZ-S type JC7515

Material	Titanium Alloy	Stainless Steel
Vc (m/min)	35 - 60	45 - 80
f (mm/rev)	0.15 - 0.20	0.15 - 0.20

● TEZ-H type DH115

Material	Mold Steel 30 - 36HRC	Mold Steel 38 - 43HRC	Hardened Steel 42 - 52HRC
Vc (m/min)	50 - 70	40 - 60	40 - 60
f (mm/rev)	0.15 - 0.25	0.10 - 0.20	0.10 - 0.15

Note)

1. Use water-soluble coolant.
2. Adjust cutting conditions according to machine rigidity or work rigidity.
3. When using -XL (8D) type , reduce rpm & Vf by 20% from standard cutting conditions.  
Pre-drilling of guide-hole (depth : 0.5D) is recommended.

**HEADQUARTER**  
**DIJET Industrial Co.Ltd.**  
 2-1-18, Kami-Higashi,  
 Hirano-ku, Osaka 547-0002, Japan  
**PHONE +81-6-6791-6781**  
**FAX +81-6-6793-1221**  
[www.dijet.co.jp](http://www.dijet.co.jp)



**MAIN OFFICE EUROPE**  
**DIJET GmbH**  
 Immermannstraße 9  
 40210 Düsseldorf, Germany  
**PHONE +49-211-5008820**  
**FAX +49-211-5008823**  
[www.dijet.de](http://www.dijet.de)

